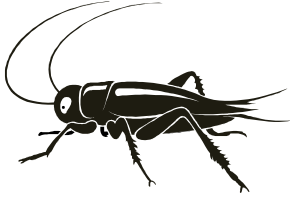
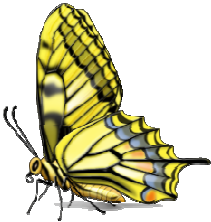


Insect Letter Matching

Draw a line to match the insect to its beginning letter.



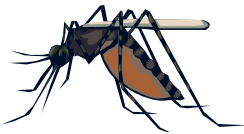
B



L



F



C



D



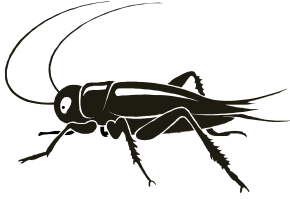
M

cricket, butterfly, dragonfly, mosquito, ladybug, fly

www.thisreadingmama.com

Insect Letter Matching

Draw a line to match the insect to its beginning letter.



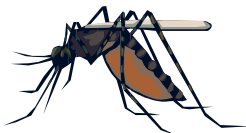
b



l



f



c



d



m

cricket, butterfly, dragonfly, mosquito, ladybug, fly

www.thisreadingmama.com