

# AT Word Puzzles

Print pictures off onto cardstock and laminate for durability. Cut out on the dotted lines to create a 3-piece puzzle for each word.

Create three workspaces for the puzzle pieces. (We used the floor for this activity.)

1. Initial letters      2. Middle letters      3. Final letters

\*Help your child locate the initial, middle, and final letters that create an -at word. The pictures will match up to provide extra support.

\*Once each puzzle is complete, help your child read the word like this: /p/ -/a/ -/t/ (with a space in between each letter sound), then blend the sounds quicker: pat.

Reading the Alphabet: AT Family  
Created by Becky @ [thisreadingmama.com](http://thisreadingmama.com)  
©2012 All Rights Reserved.



p

a

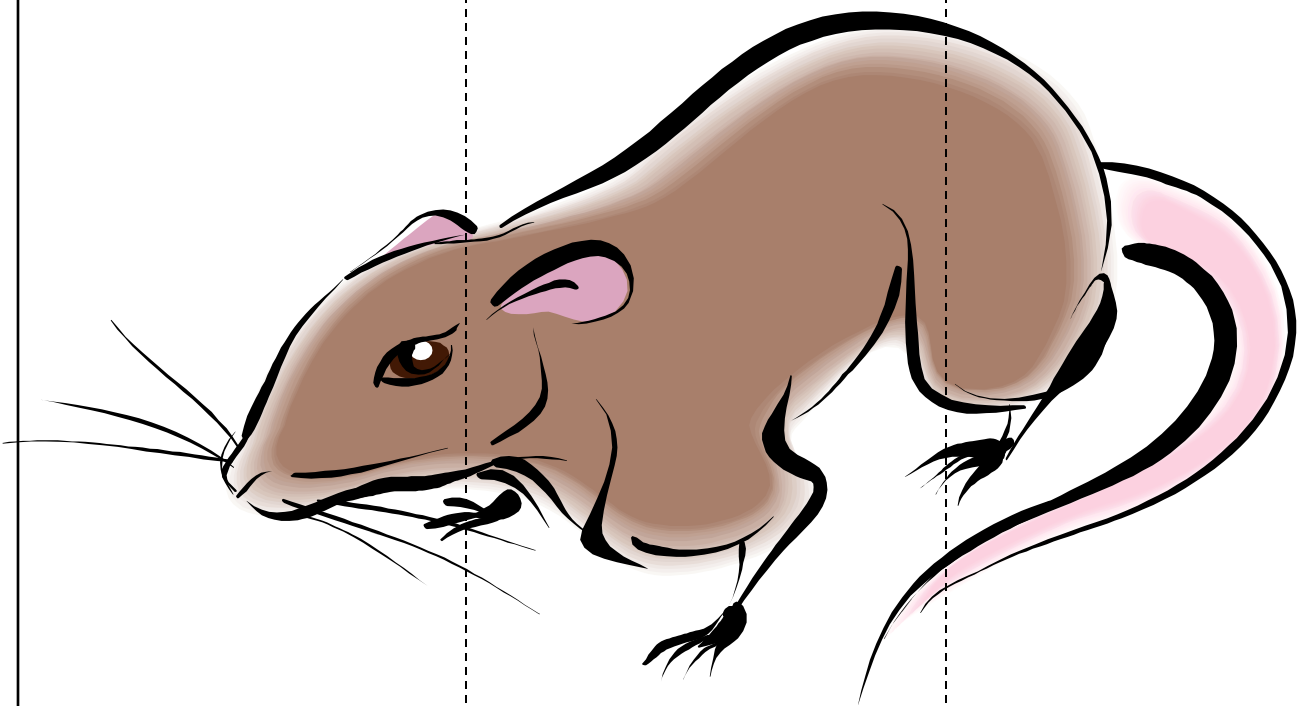
t



b

a

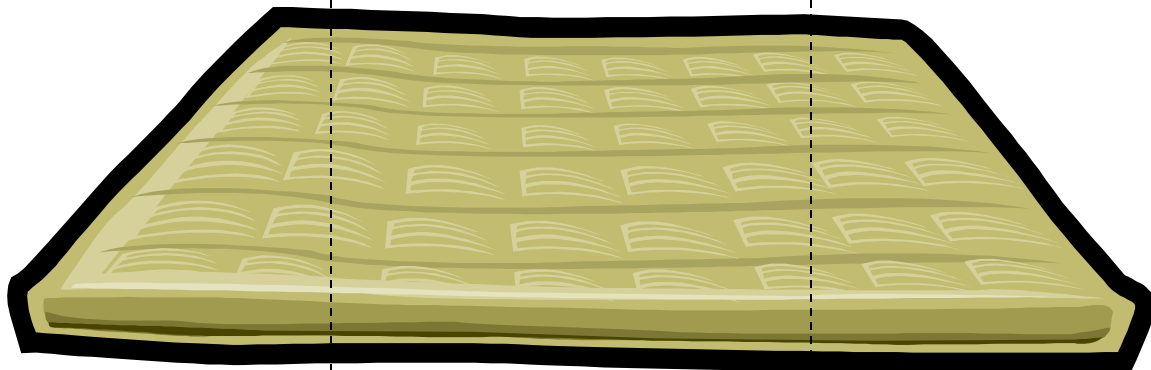
t



r

a

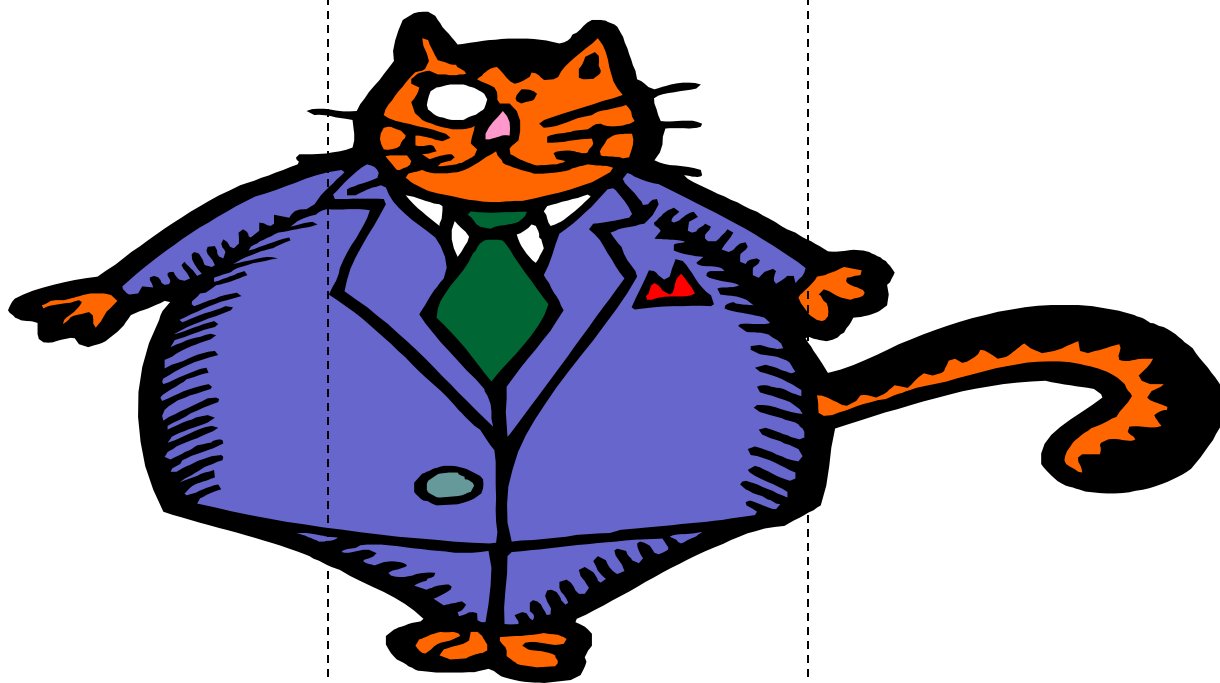
t



m

a

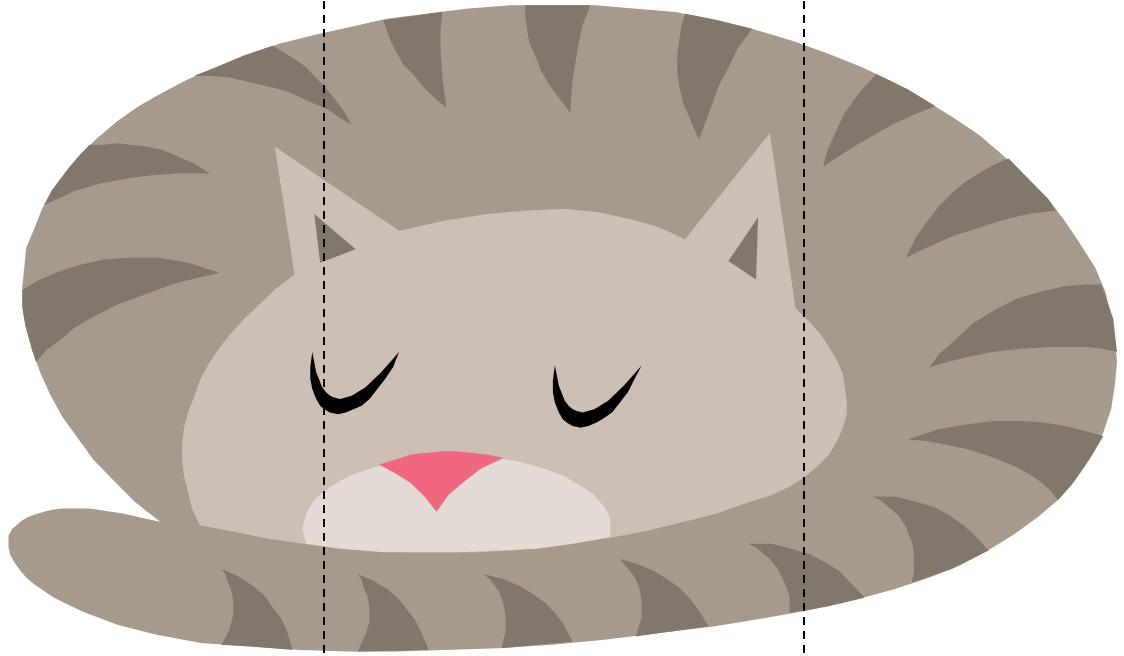
t



f

a

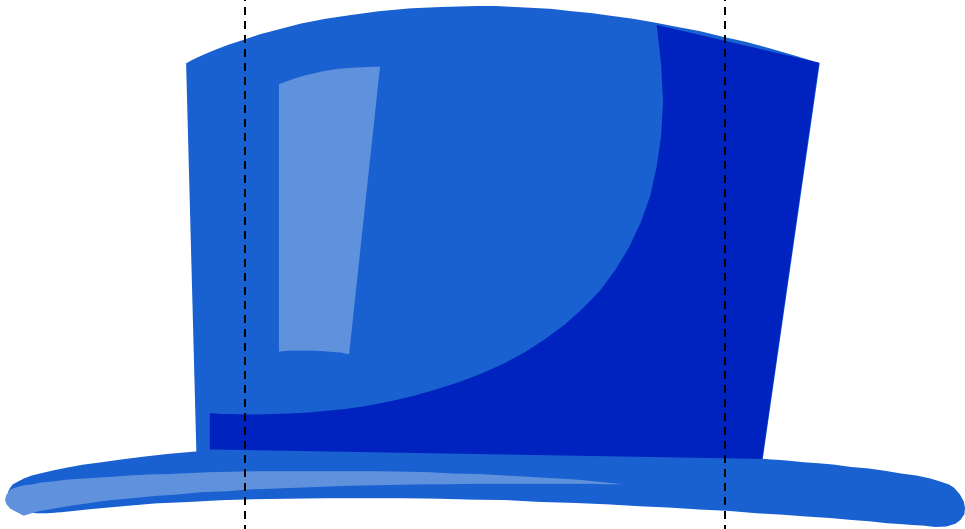
t



c

a

t



h

a

t