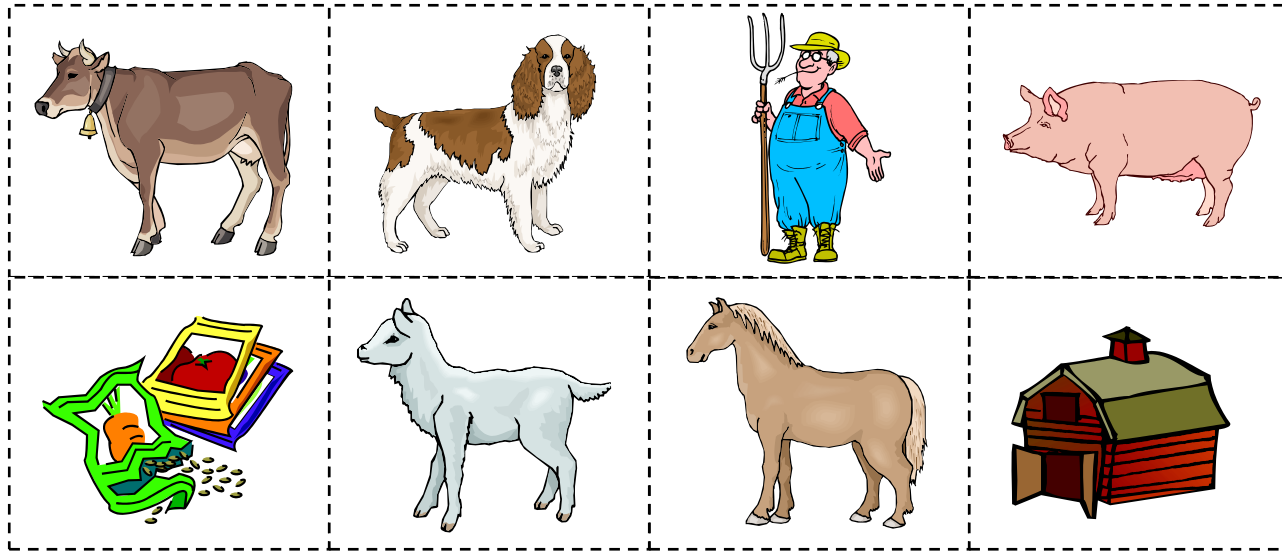


# Down on the Farm

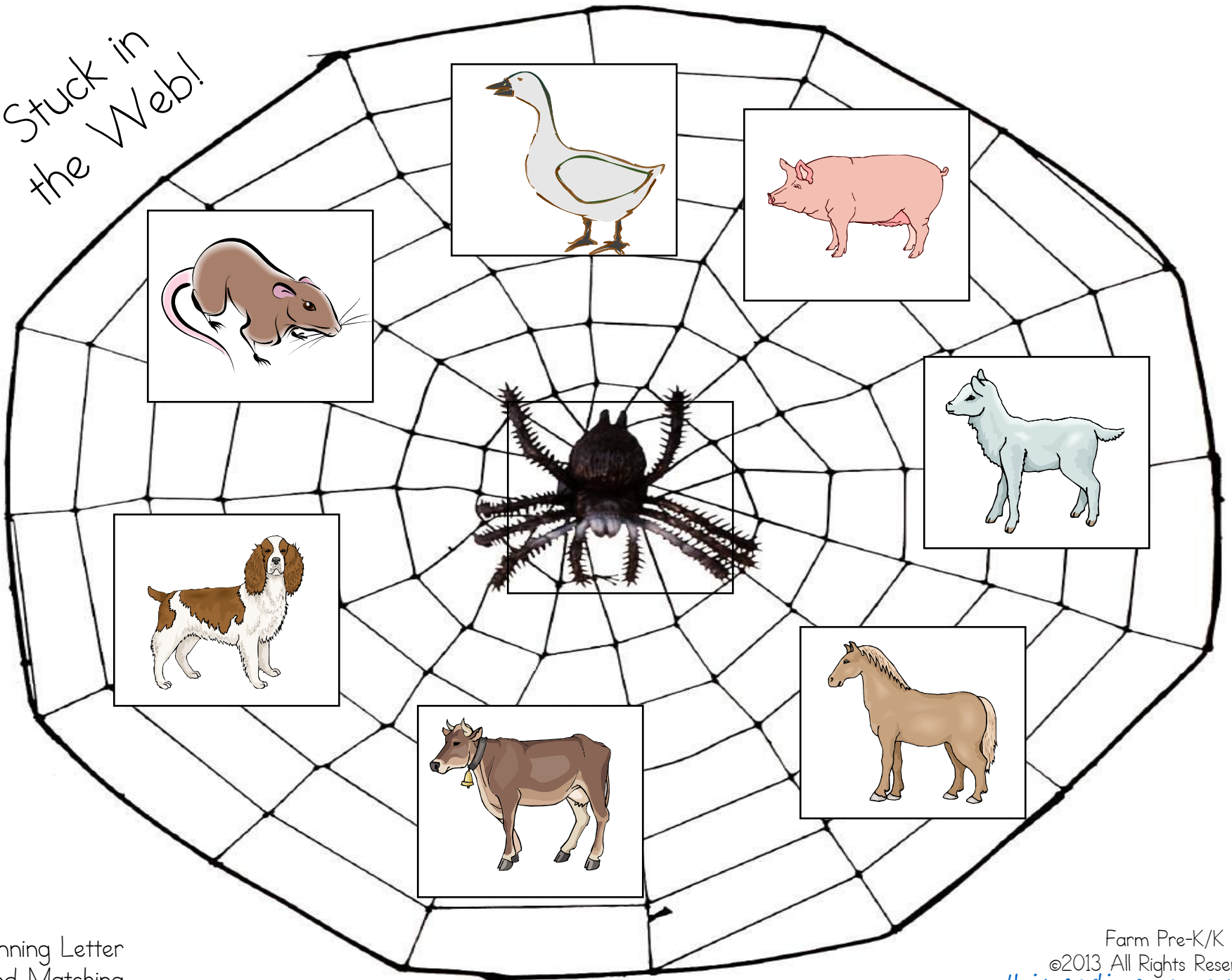
## Beginning Letter Sound Matching

Cut apart the farm pictures below. Paste them down on the farm, matching the beginning sounds to each letter.



Answers: C-cow, D-dog, F-farmer, P-pig, S-seeds, L-lamb, H-horse, B-barn

Stuck in  
the Web!

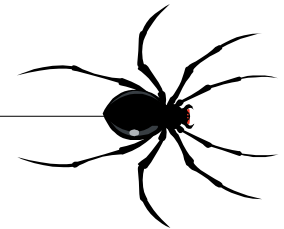


# Stuck in the Web!

## Beginning Letter Sound Matching

Oh no! Look at the animals that are stuck in the spider's web! Cut apart each letter and paste it onto the animal that begins with that letter.

S	L	D	G
P	C	H	R



Answers: S- Spider, L- Lamb, D- Dog, G- Goose, P- Pig, C- Cow, H- Horse, R- Rat

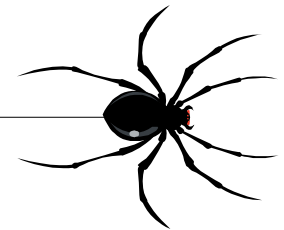
*This pack was designed for the younger siblings of older children who were reading Charlotte's Web. This is why you will see spider activities sprinkled in this pack.*

# Stuck in the Web!

## Beginning Letter Sound Matching

Oh no! Look at the animals that are stuck in the spider's web! Cut apart each letter and paste it onto the animal that begins with that letter.

s	l	d	g
p	c	h	r



Answers: s- spider, l- lamb, d- dog, g- goose, p- pig, c- cow, h- horse, r- rat

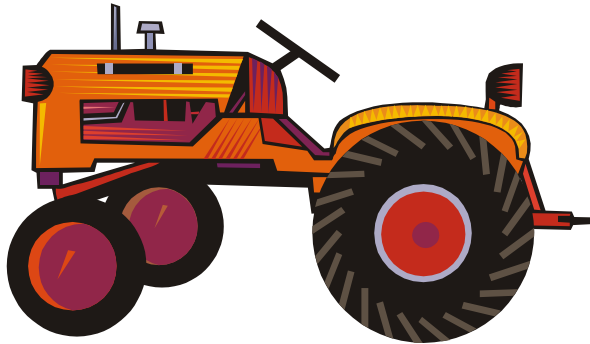
# Syllable Count and Clip

## Directions:

- \*Print these cards onto cardstock, cut apart, and laminate for durability.
- \*Lay one card out at a time on a work surface. Say the name of the picture like this "farm-er"; separating the syllables with a little pause. Do it again and clap once for each syllable.
- \*Using a clothes pin, clip the correct number of syllables for each picture.
- \*After modeling, let your child try it out!

1

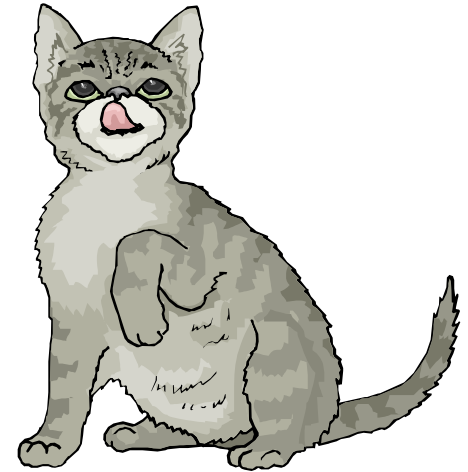
2



www.thisreadingmama.com

1

2

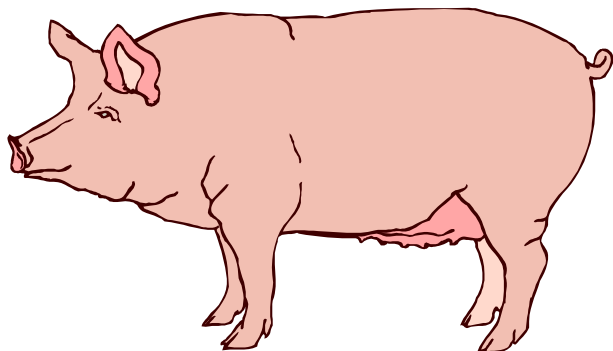


1 Syllable: pig, duck, corn, horse, barn

2 Syllables: tractor, kitten, chicken, farmer, orchard

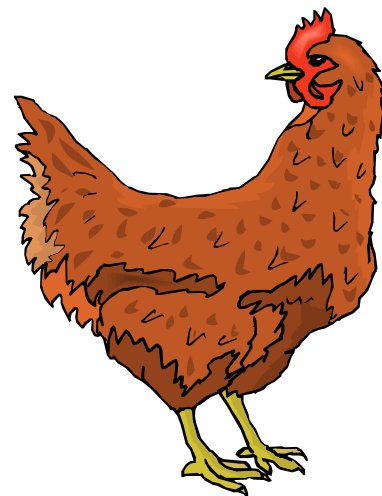
1

2



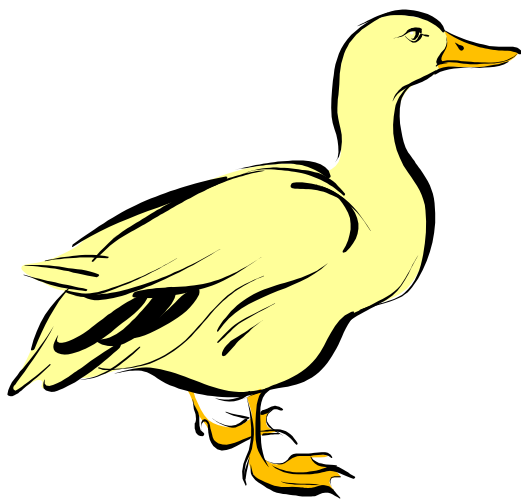
1

2



1

2



1

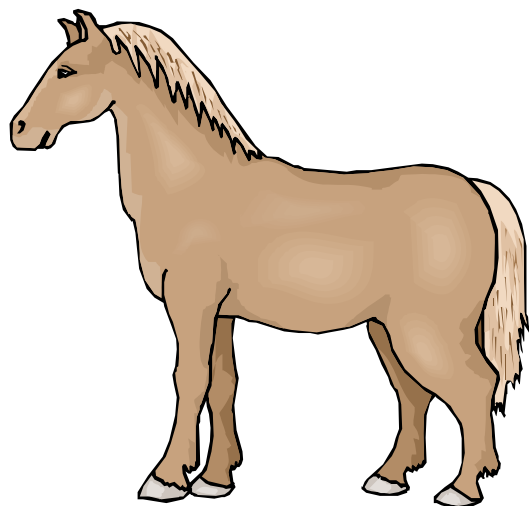
2





1

2



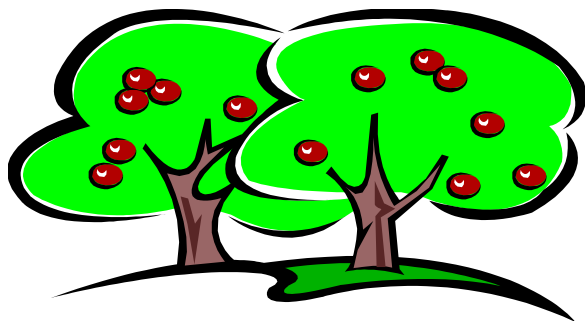
1

2



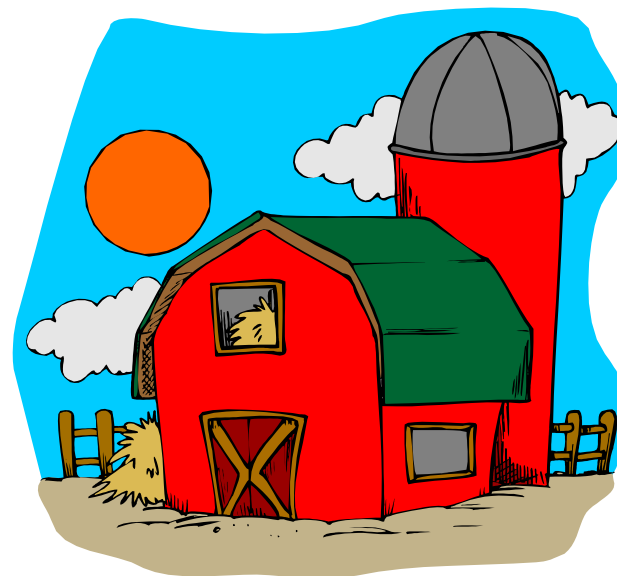
1

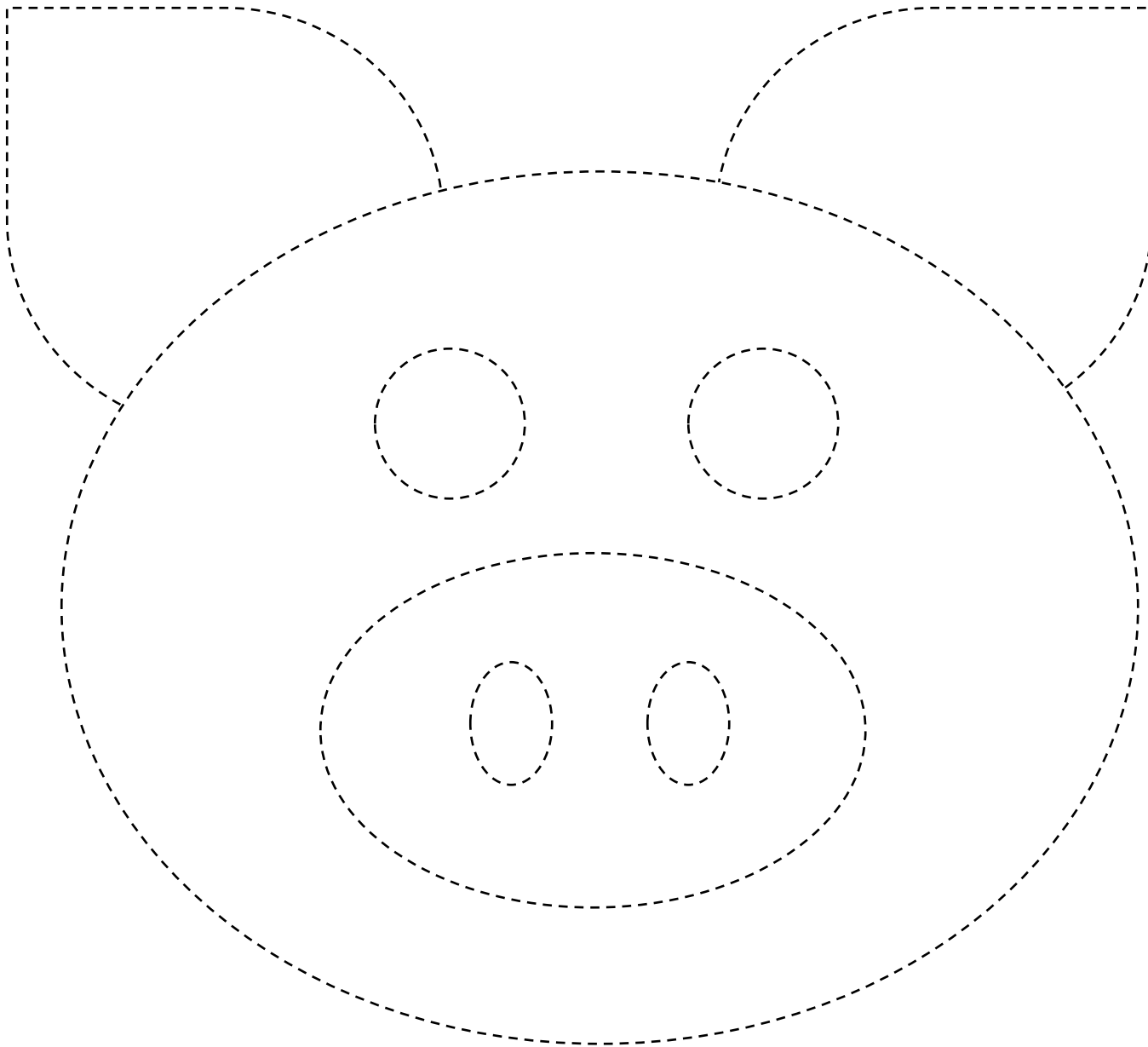
2

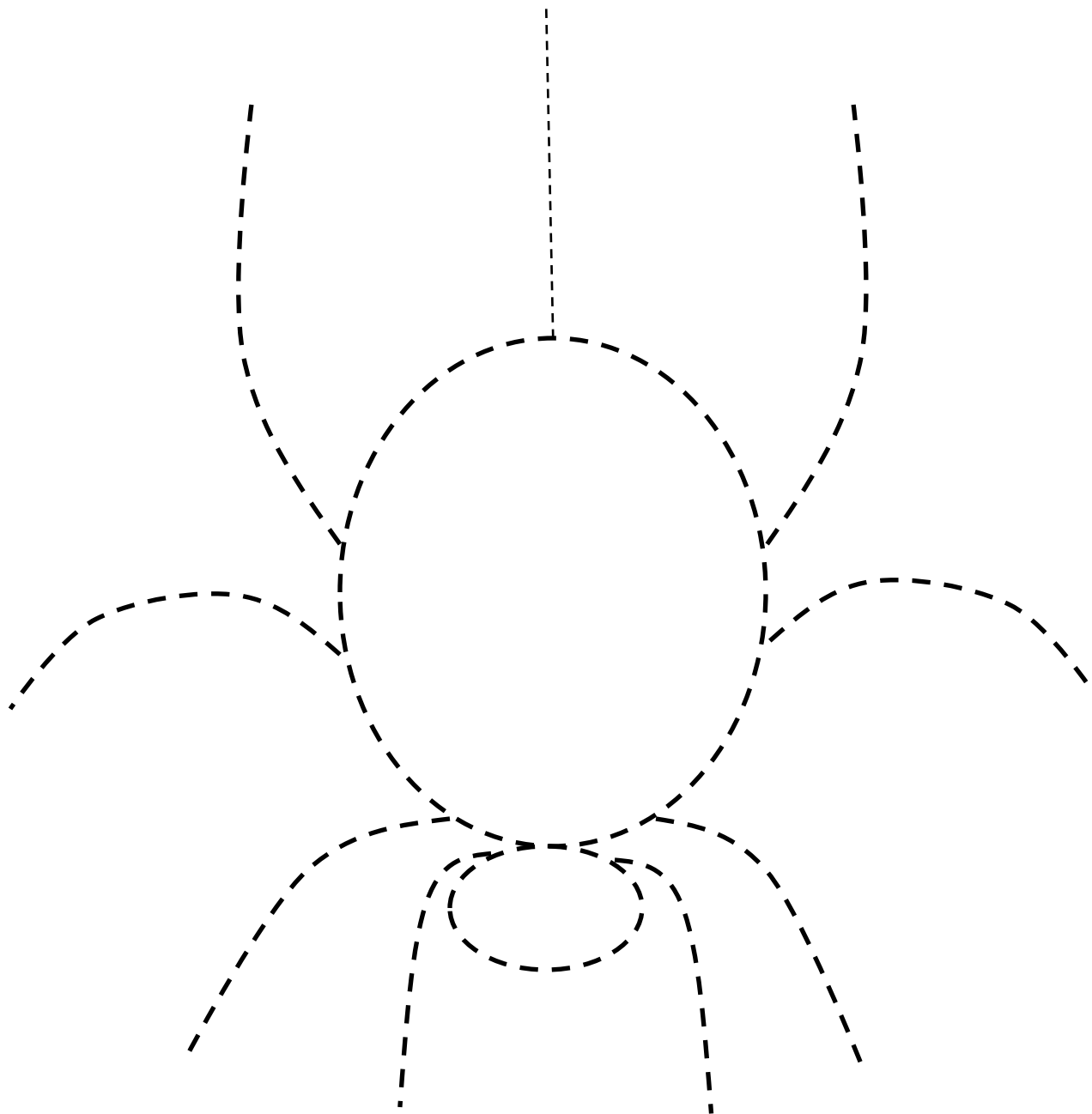


1

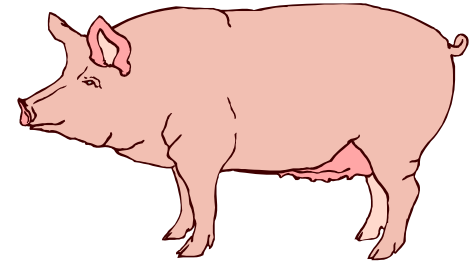
2







# Pig Poke Page

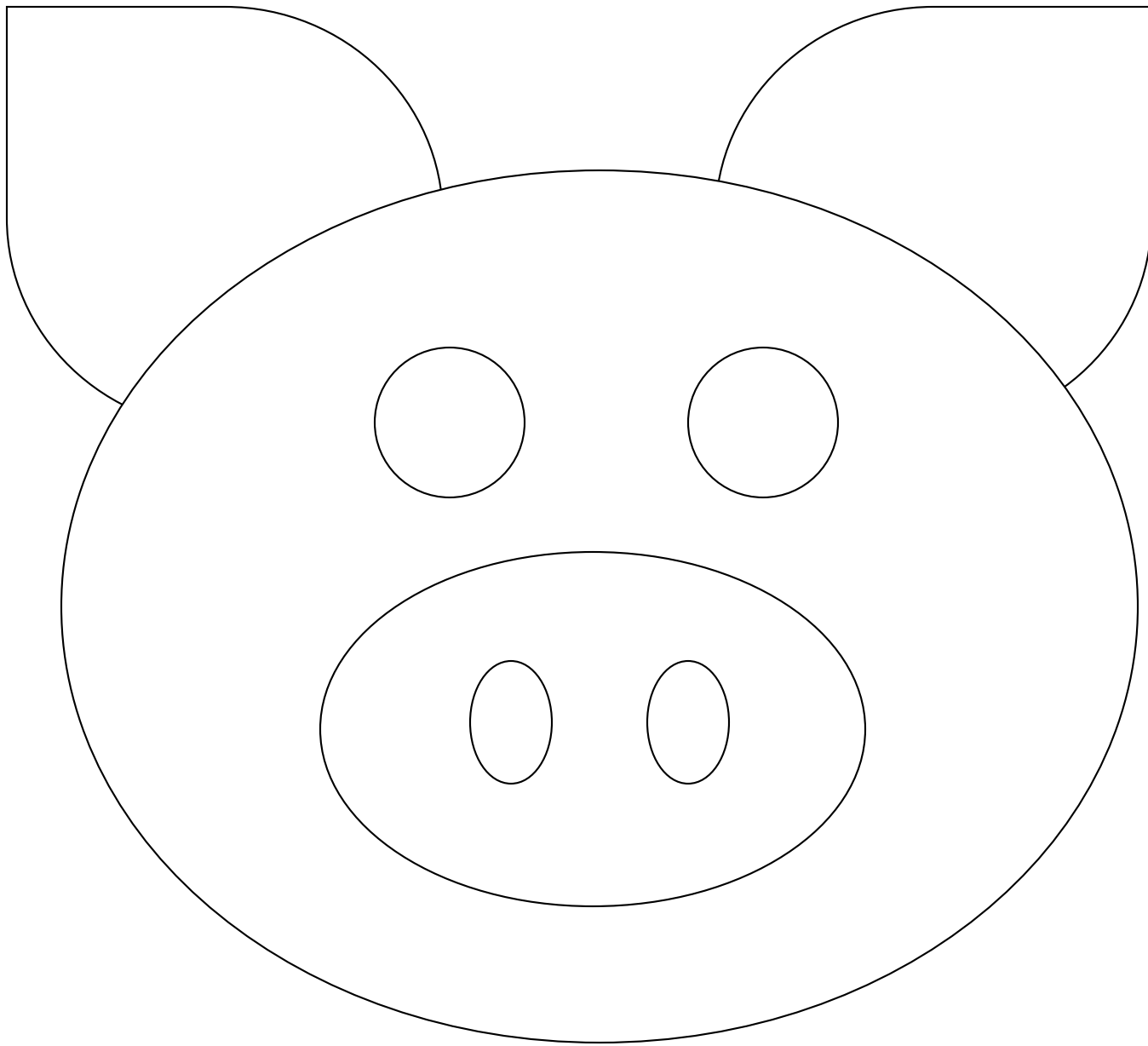


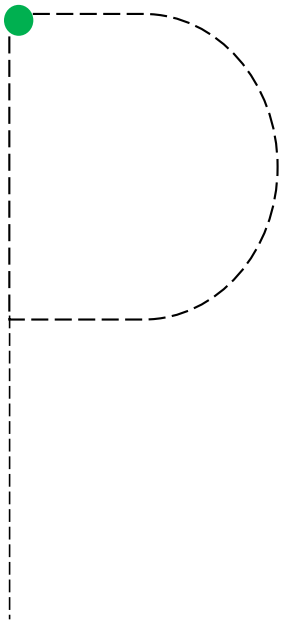
## How To Use:

- \*Print the pig poke page onto regular copy paper.
- \*Place on top of carpet.
- \*Using a toothpick or push pin, poke holes along the outline of the pig.
- \*Place on a window and let the light shine through!

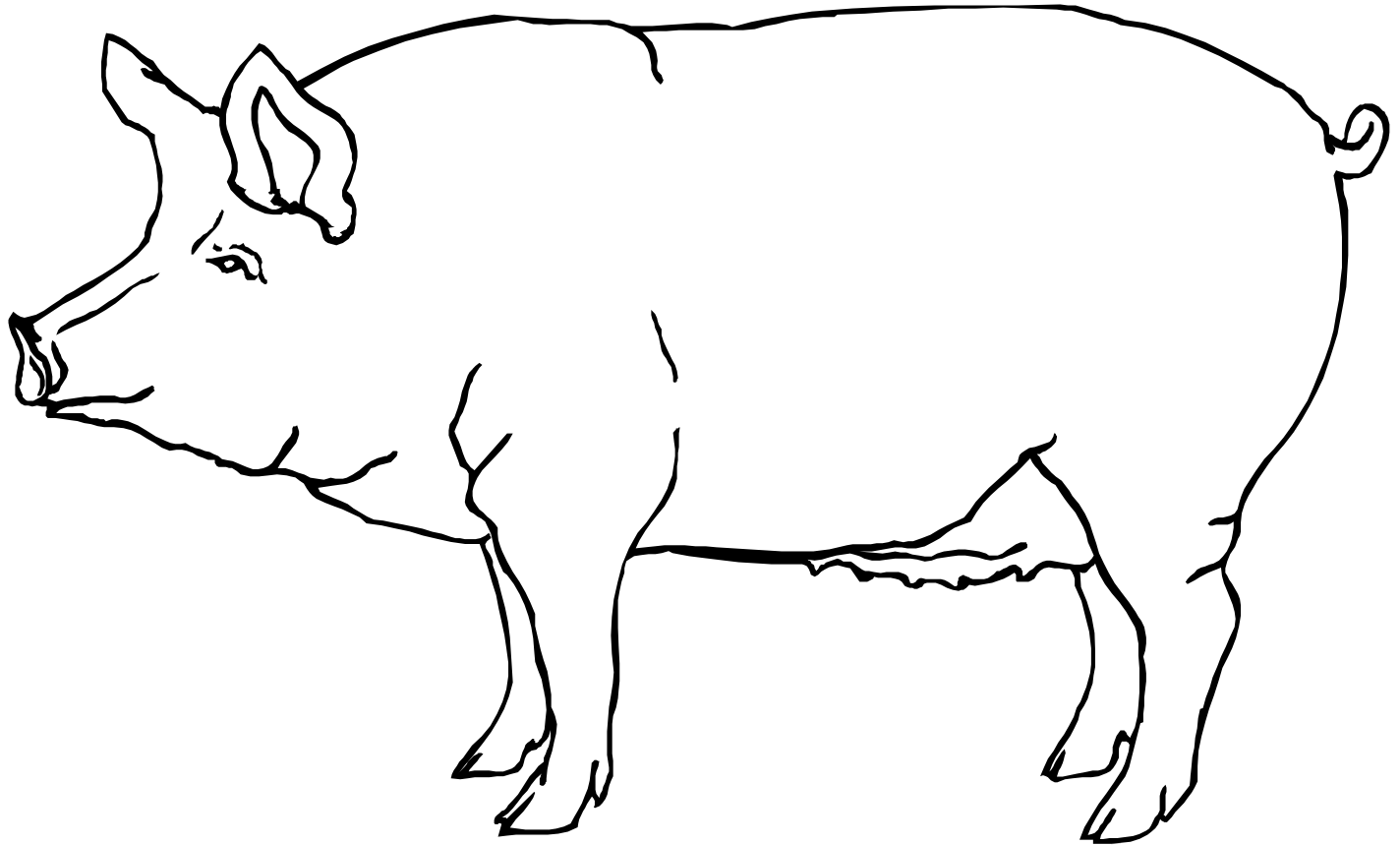
## Variations:

- \*Tape a piece of construction paper under poke page and poke through both pieces. When finished poking holes, remove poke page and place the construction paper pig on a window to let the light shine through!
- \*Place in a plastic sleeve protector and trace the pig with dry erase markers.
- \*Place farm-themed stickers all along the outline of the pig.





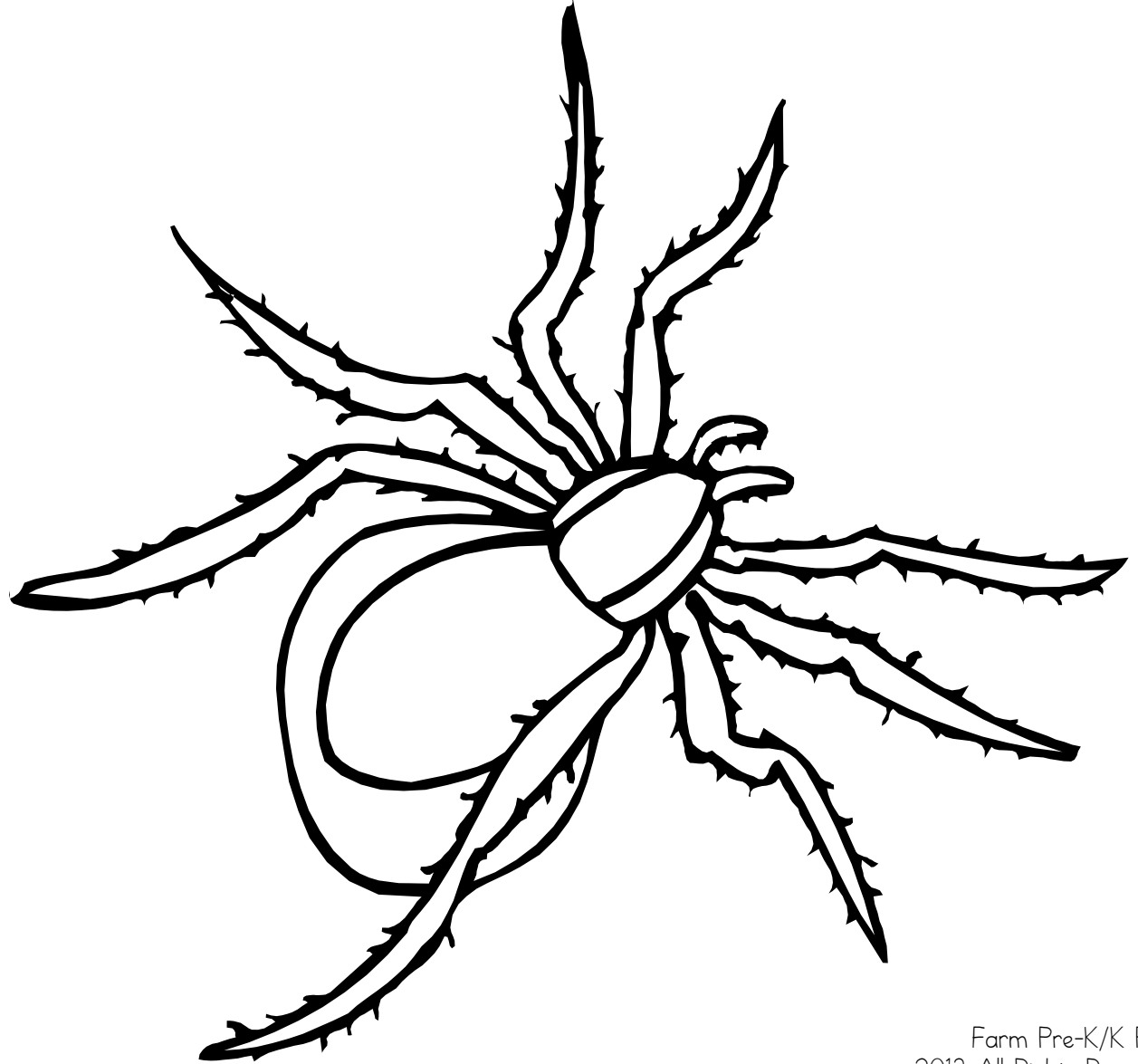
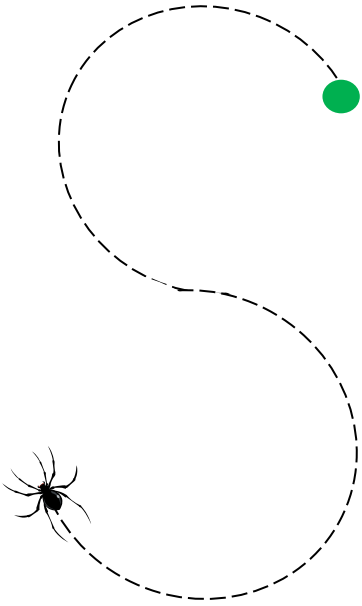
is for PIG



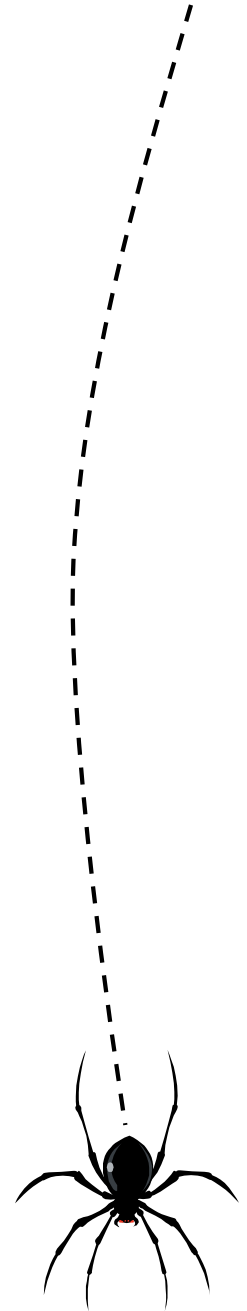
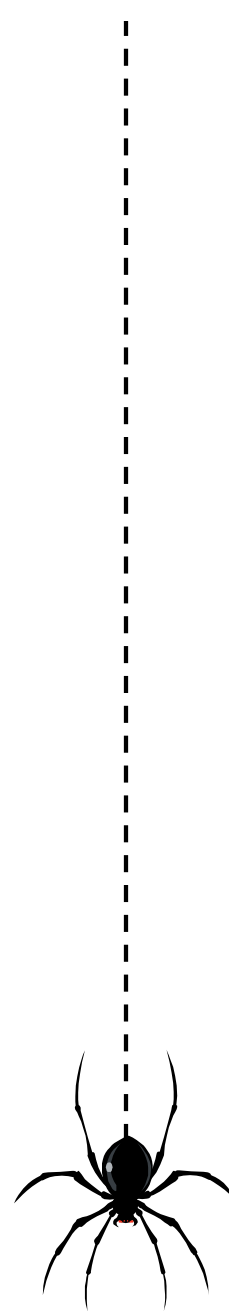
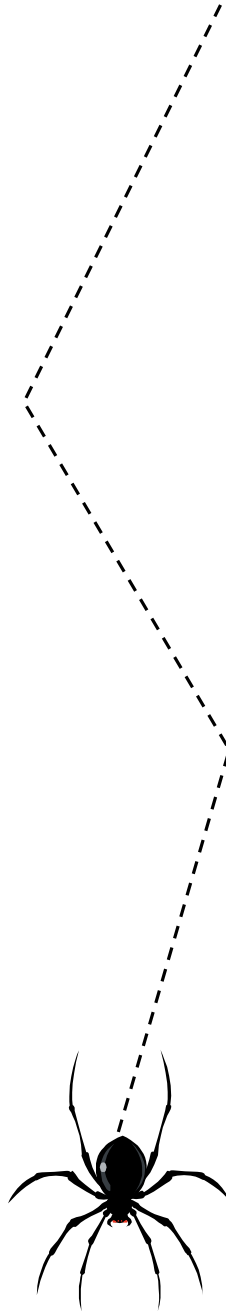
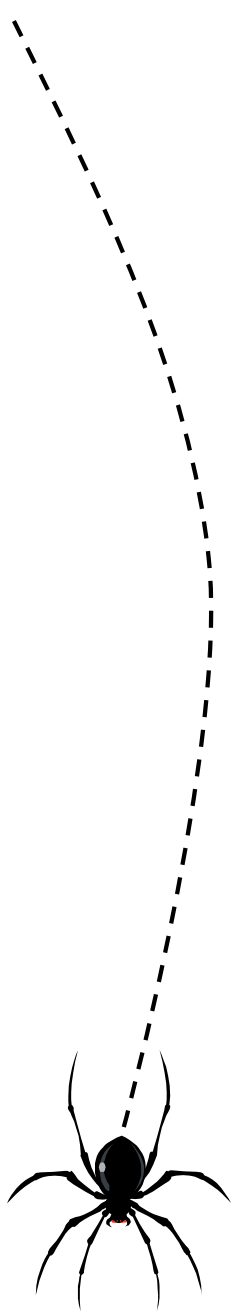
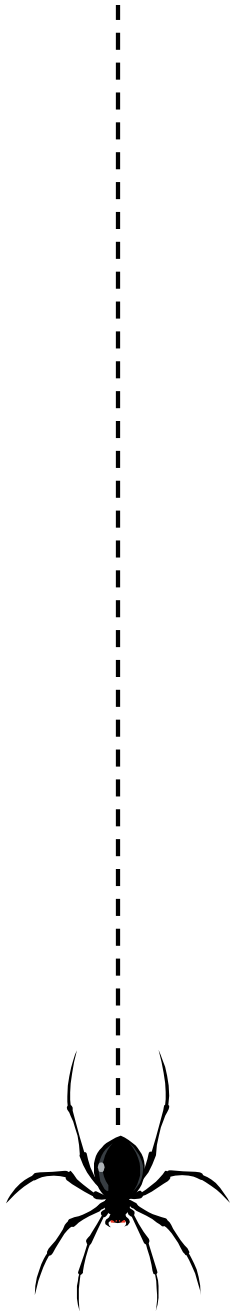
is for FARM



is for SPIDER







# Chicken Eggs Print Awareness

## Directions:

- Ask your child draw as many chicken eggs as he'd like. Count them together.
- Write the number of eggs in the blank card provided below.
- Cut out and mix up this sentence.
- Lay out all the words so your child can see them. Say the sentence in the correct order and let your child help you put them back in the right order.
- Glue them down on paper and display with your child's eggs.
- Read the sentence to your child, pointing to each word as you read it.
- See if your child can do it, too!

I	gathered	write a number
chicken	eggs.	

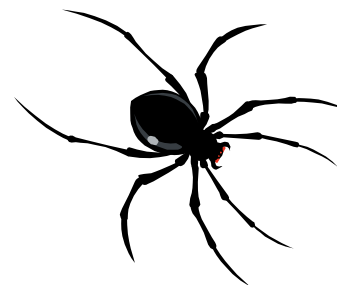


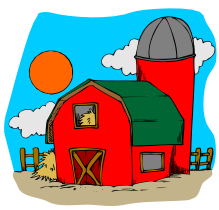
# Spider Print Awareness

## Directions:

- Help your child draw a spider with eight legs.
- Cut out and mix up this sentence.
- Lay out all the words so your child can see them. Say the sentence in the correct order and let your child help you put them back in the right order.
- Glue them down on the paper under your child's spider.
- Read the sentence to your child, pointing to each word as you read it.
- See if your child can do it, too!

The	spider	has
eight	legs .	





Down on the Farm

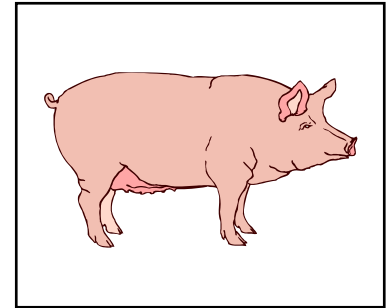
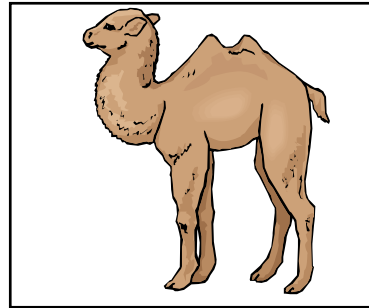
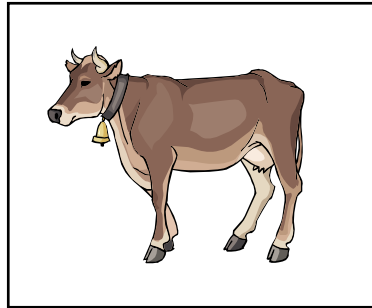
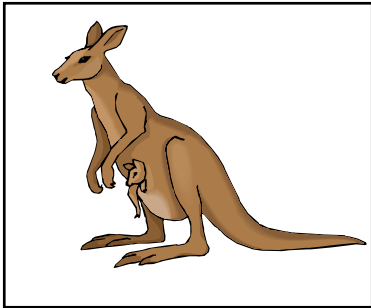
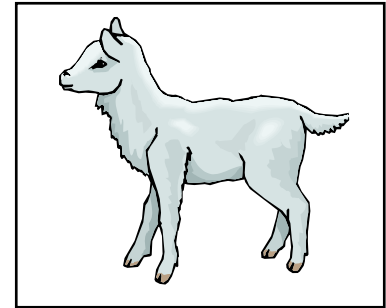
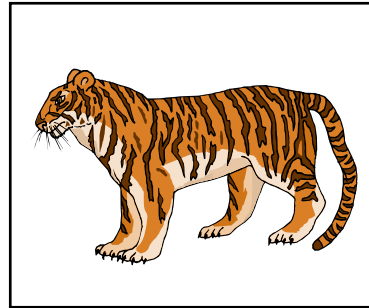
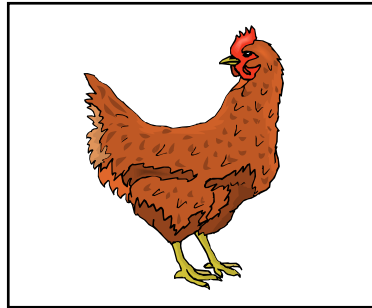
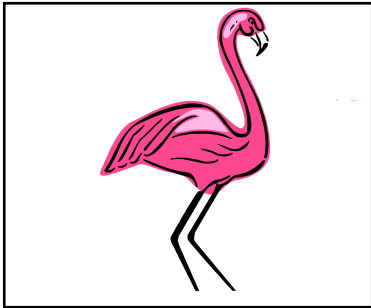
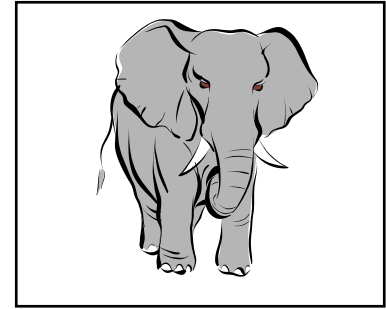
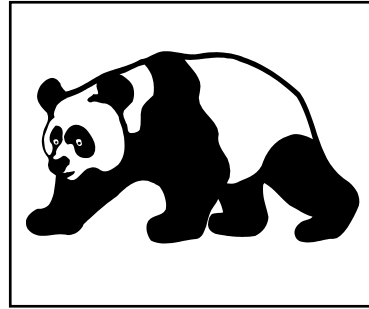
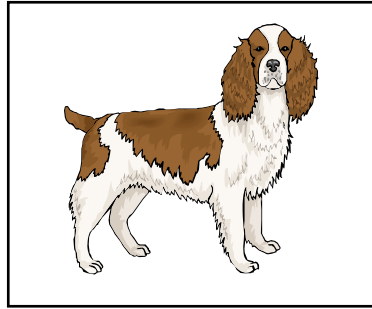
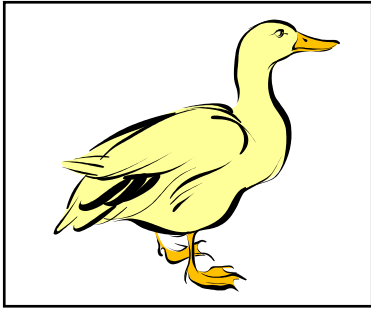


NOT on the Farm

Farm Animal Sorting Mat

# Animal Sorting

Cut apart and sort the animals on the mat: "down on the farm" and "not on the farm."



Farm: duck, dog, chicken, lamb, cow, pig

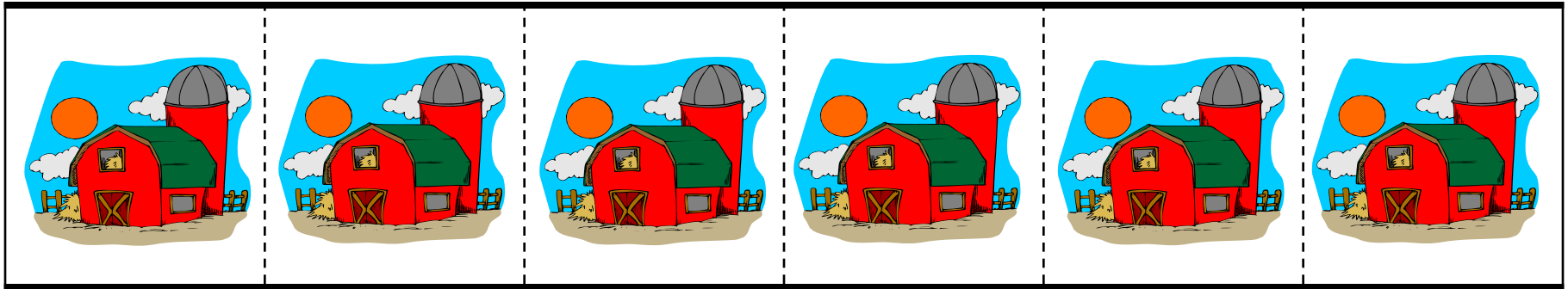
Not a Farm: panda, elephant, flamingo, tiger, kangaroo, camel

Suggestion: Print onto cardstock and laminate for durability.

# Farm Cut & Pattern Cards

\*I recommend printing these onto cardstock to make it easier for the child to cut.

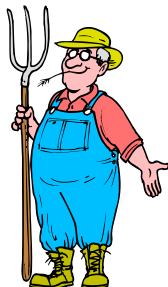
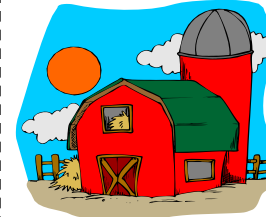
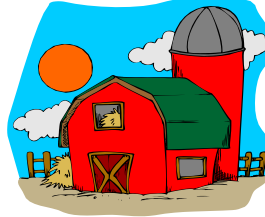
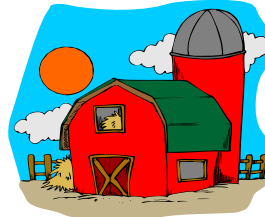
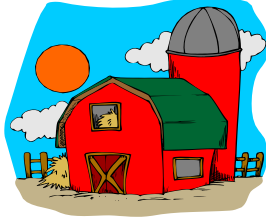
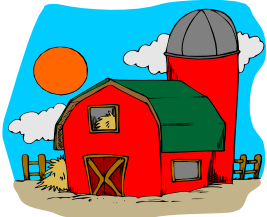
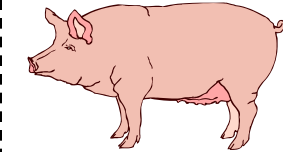
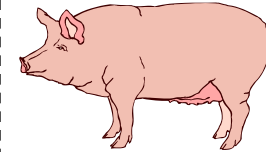
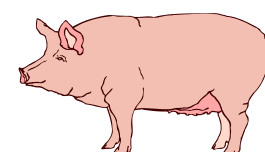
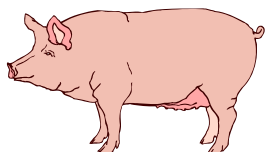
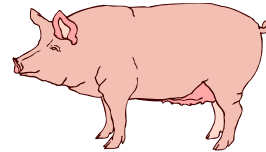
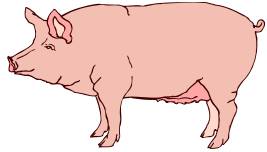
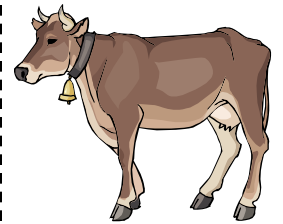
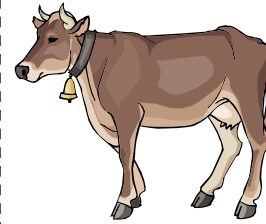
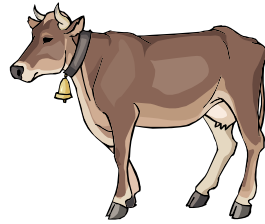
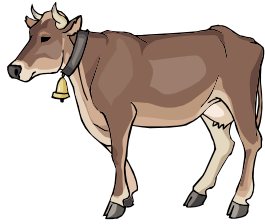
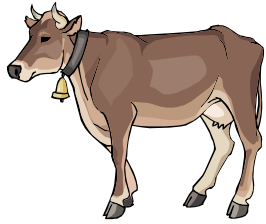
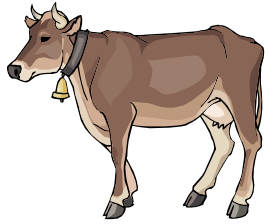
\*To prepare for the child, cut along the darker, horizontal lines first to create 4 separate strips. (like the strip below)



\*Give the strips to the child and ask her to cut along each dotted line to make six separate picture cards for each row.

\*This can be used as a stand-alone cutting activity OR the little cards can then be used to make patterns together with your child. (such as: leaf, tree, leaf, tree, etc.)

# Farm Cut & Pattern Cards



1

2

3

4

5

6

7

8

9

10

11

12

13

14

15

16

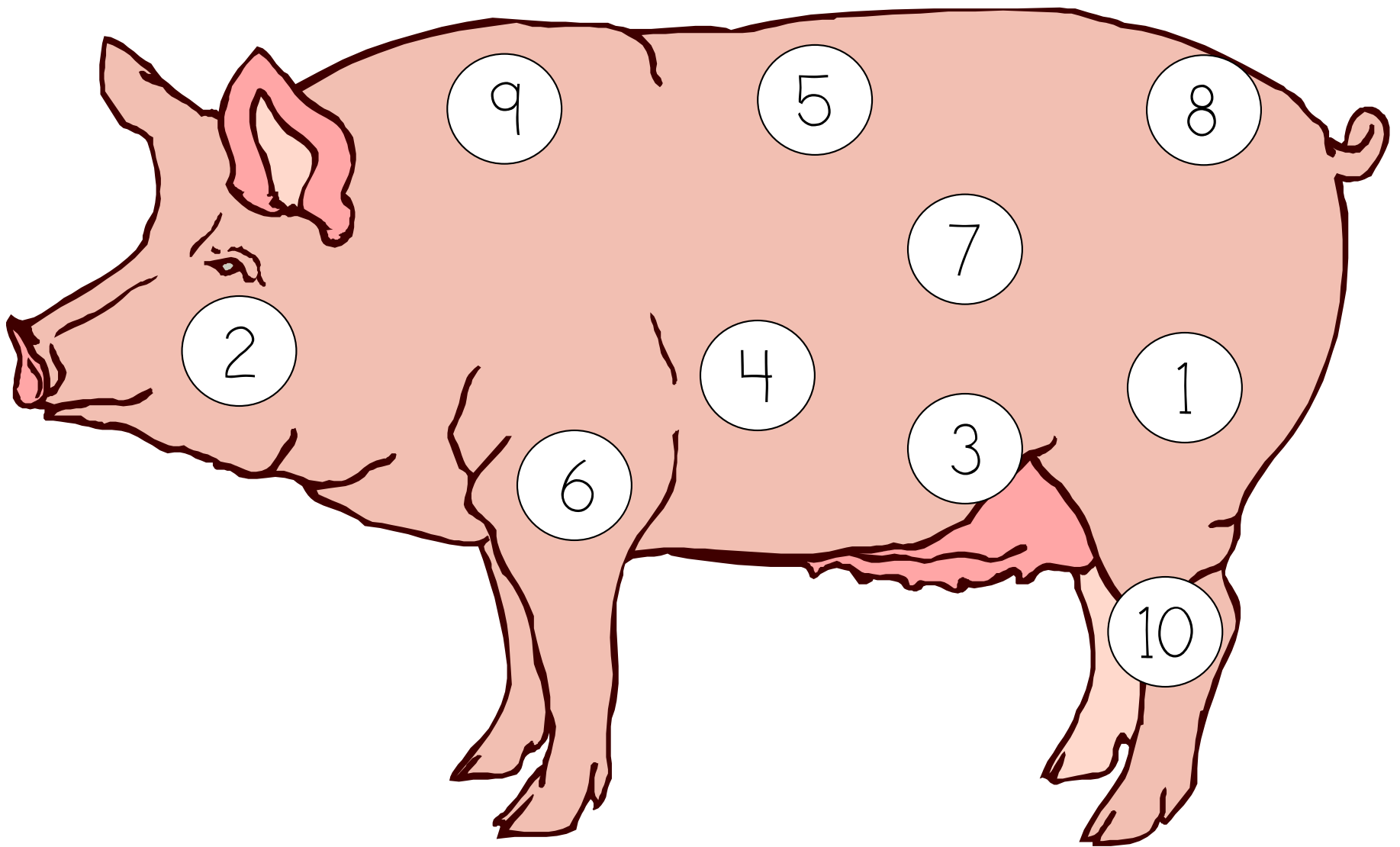
17

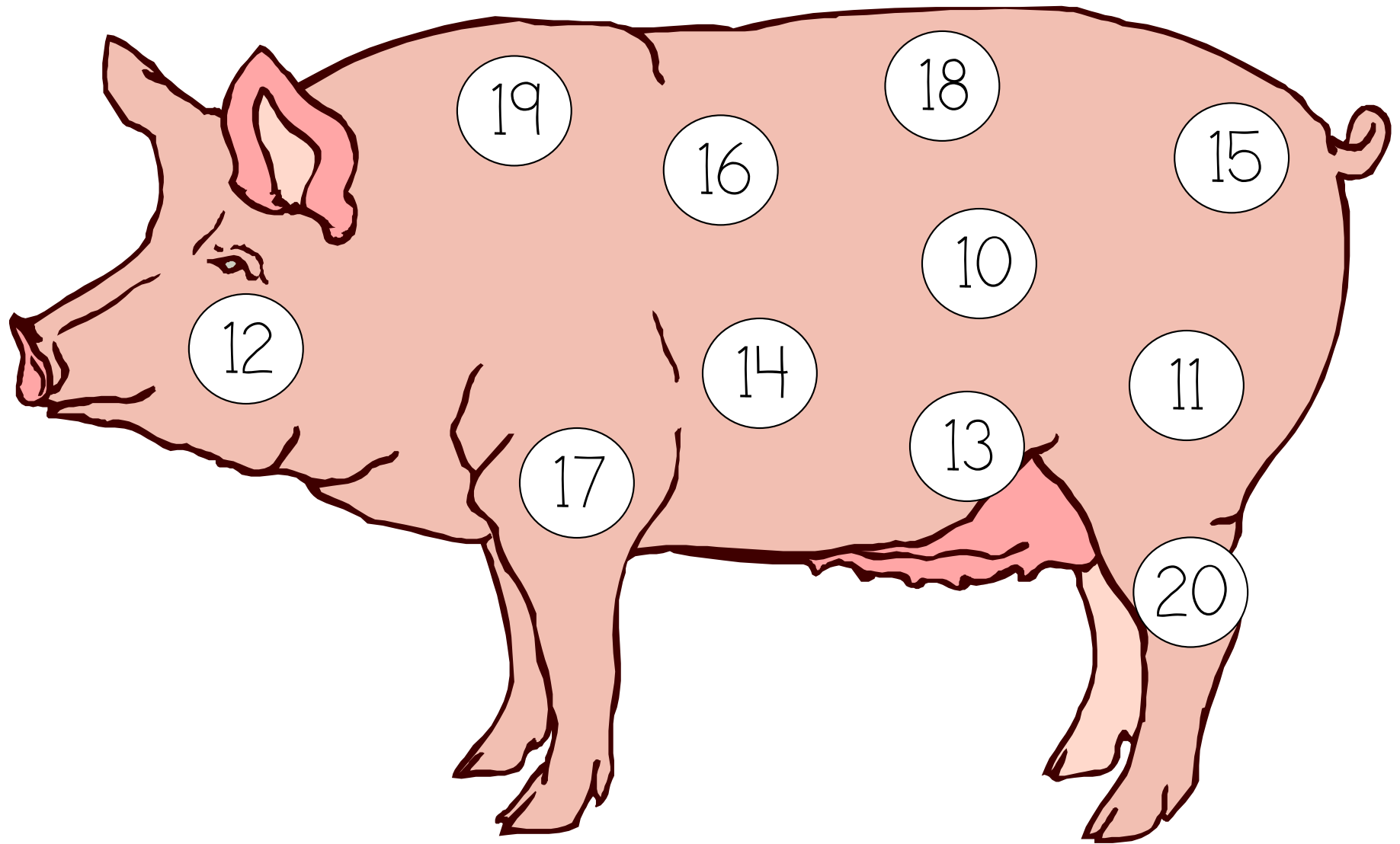
18

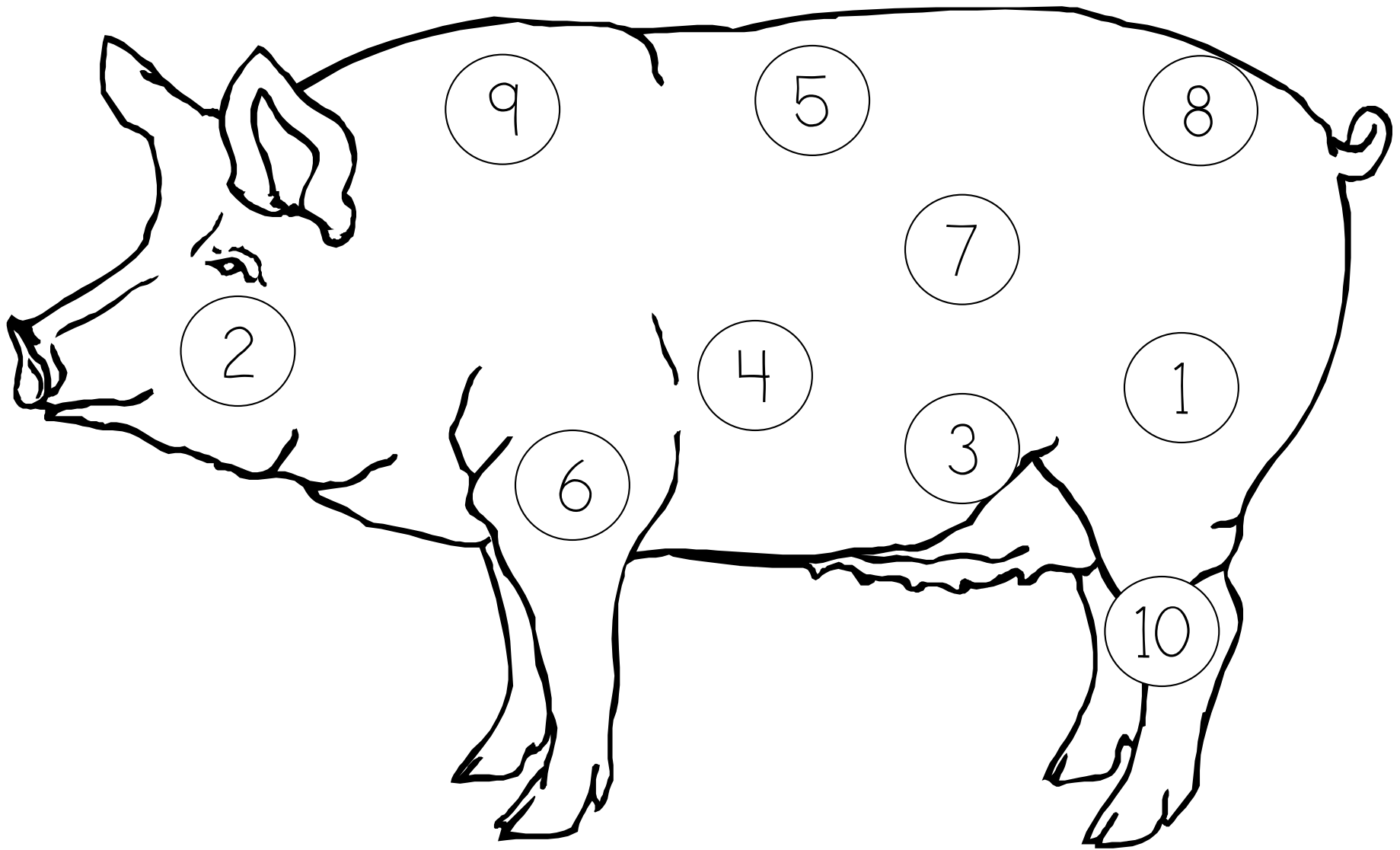
19

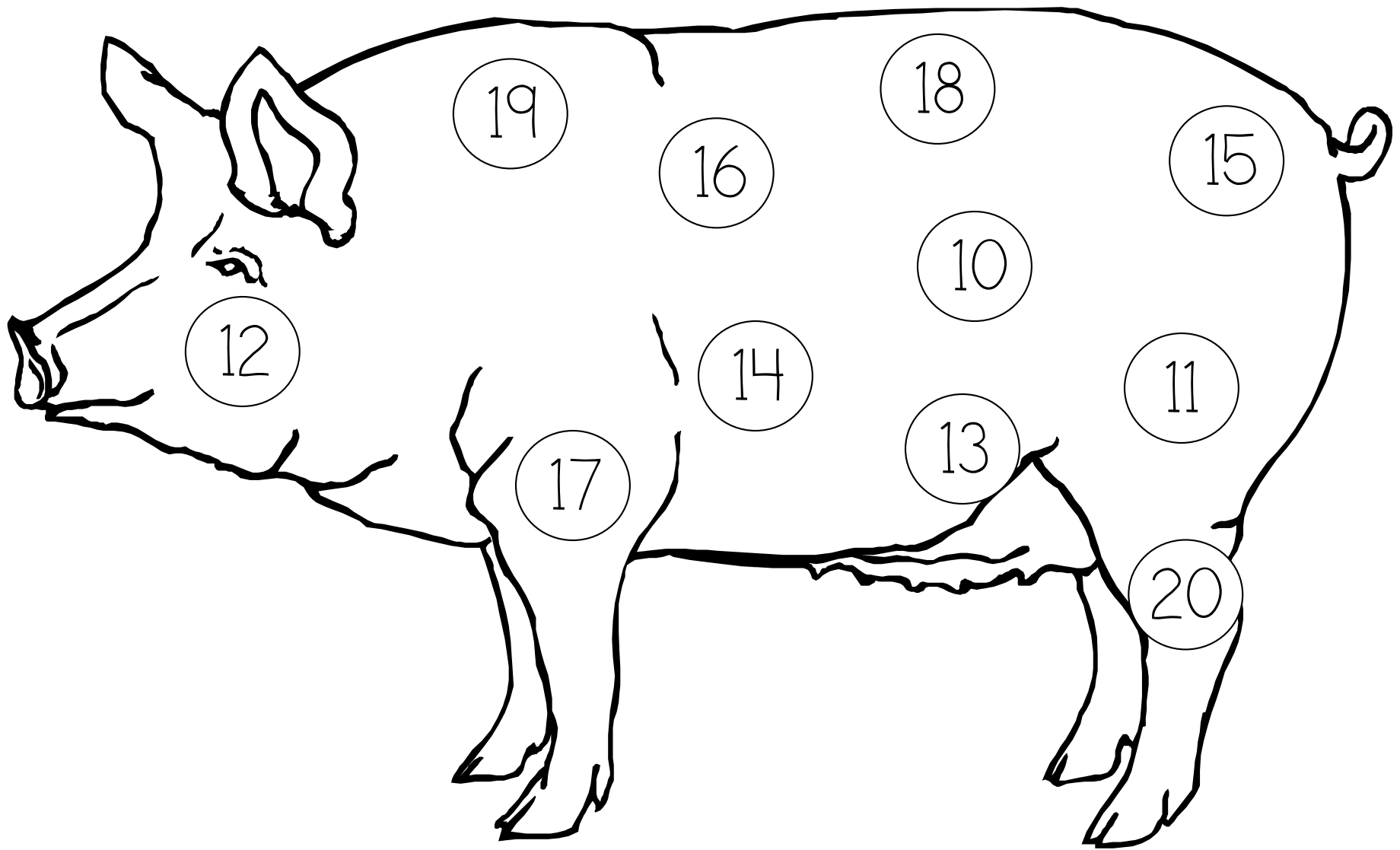
20

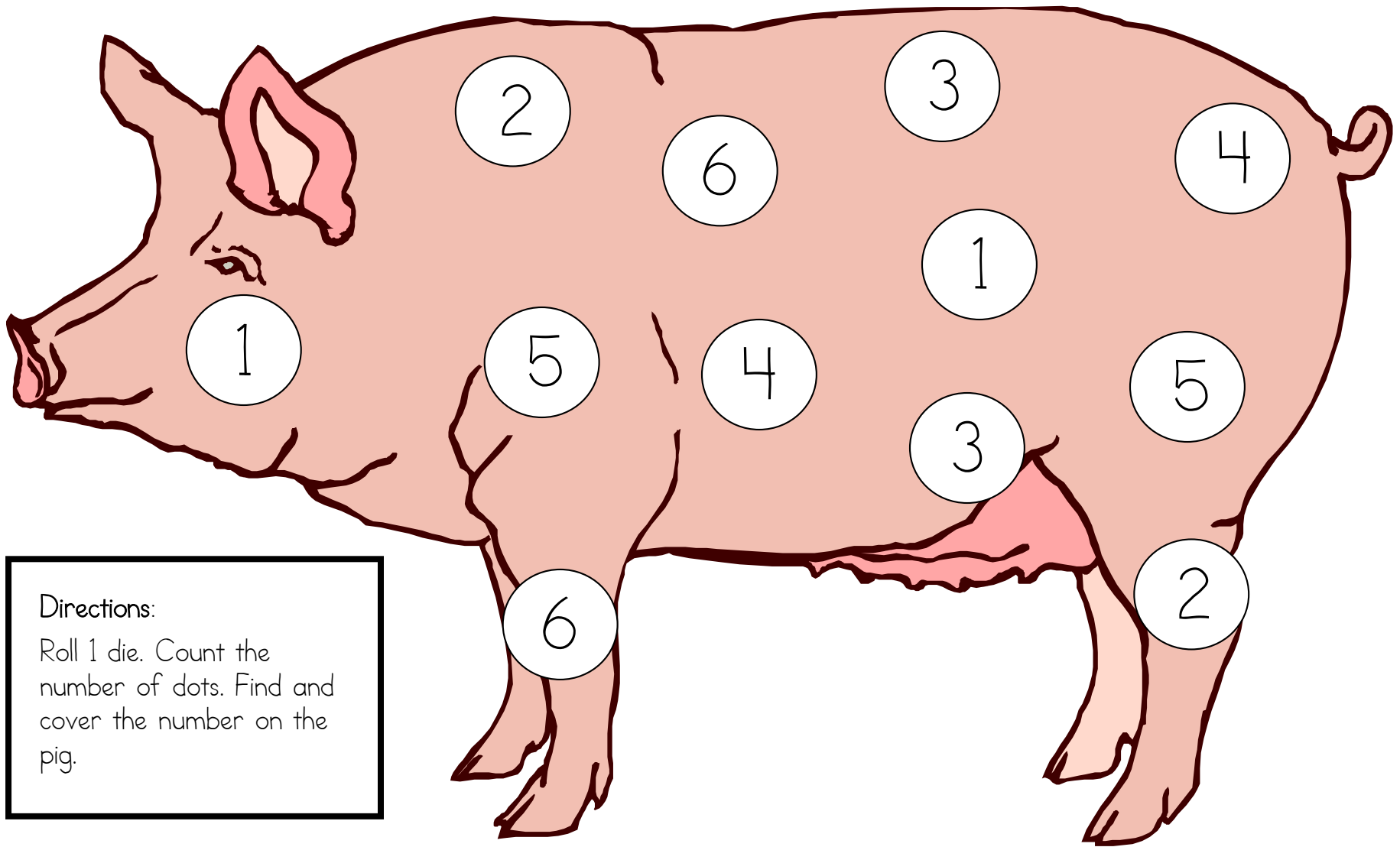






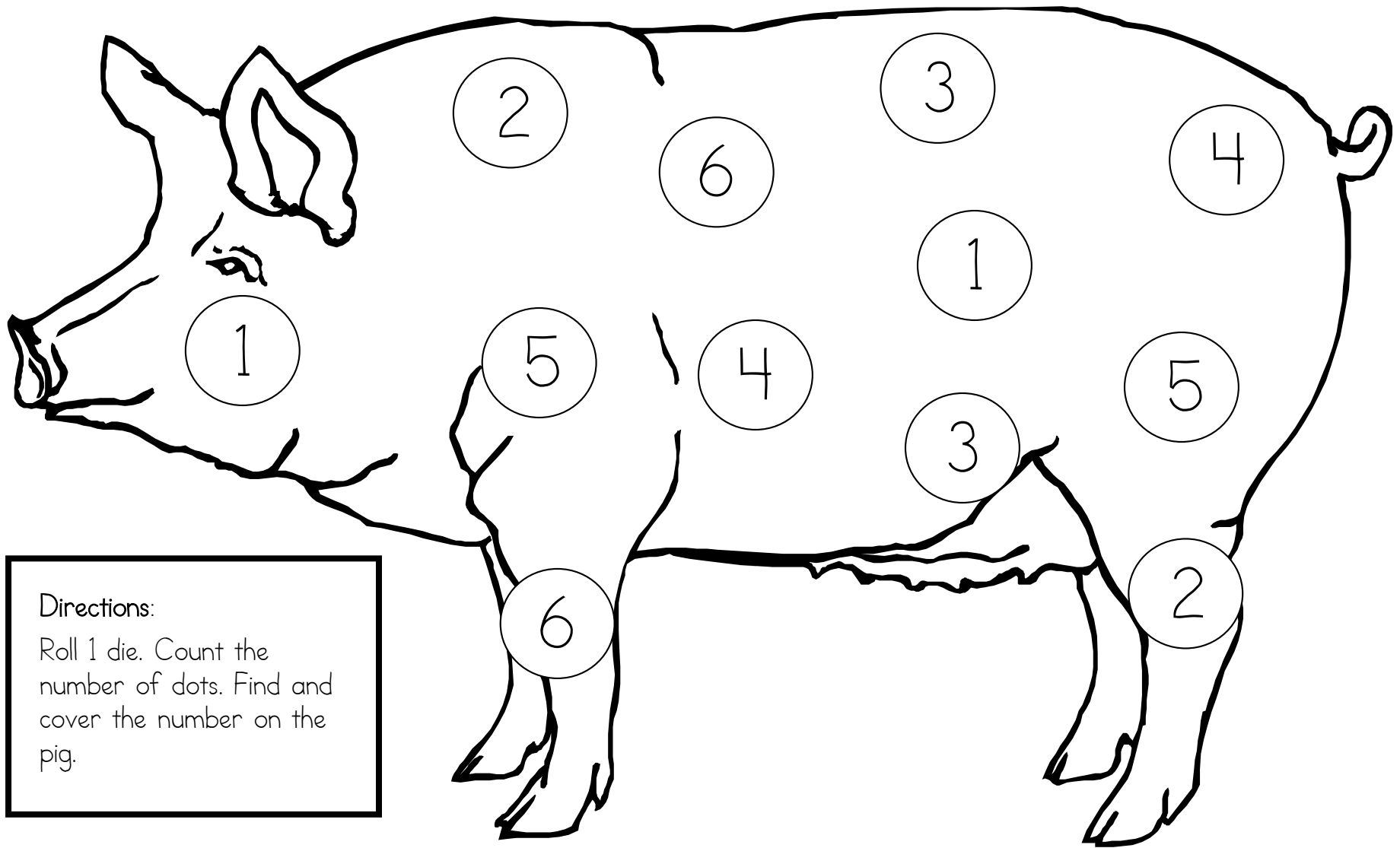






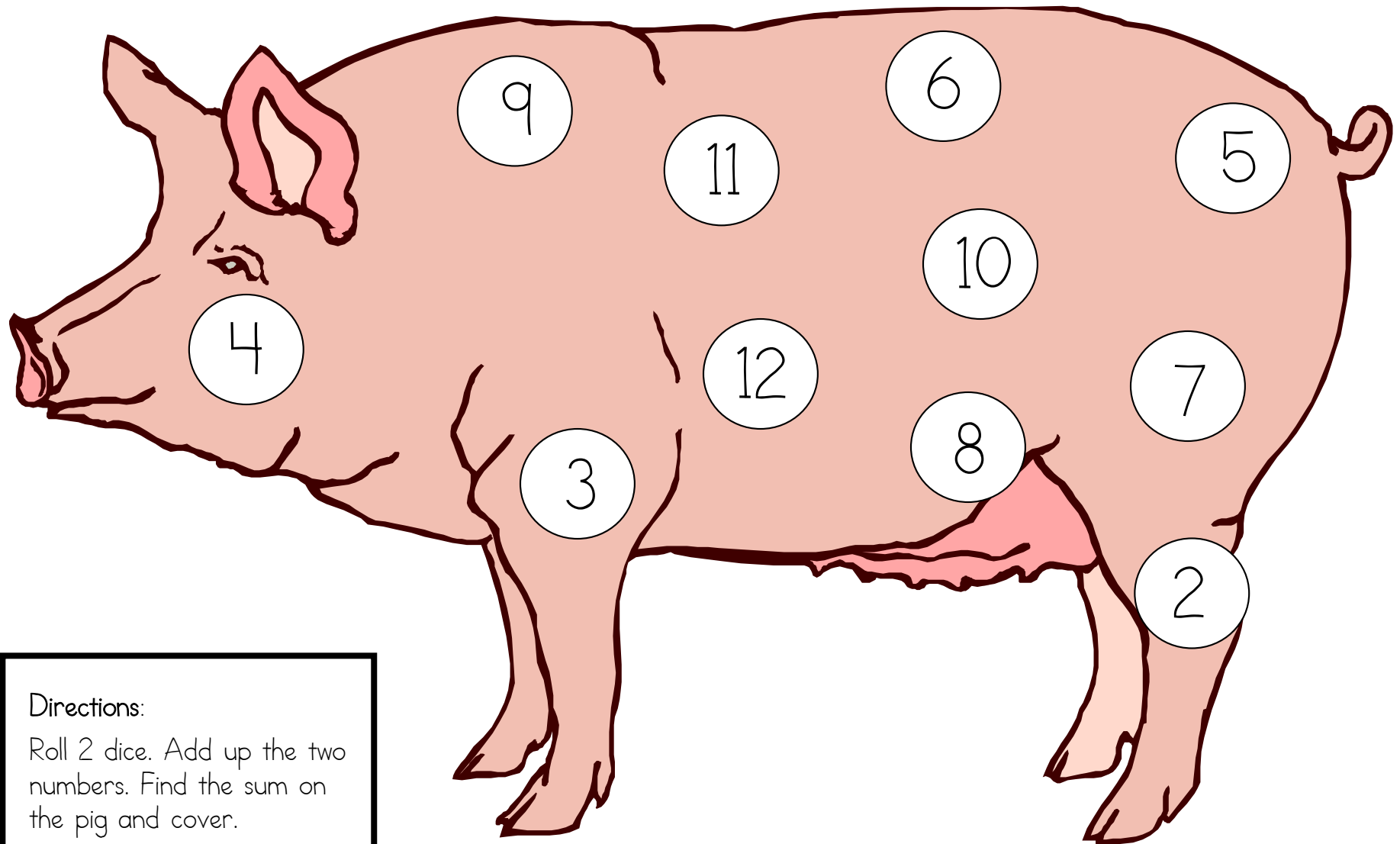
**Directions:**

Roll 1 die. Count the number of dots. Find and cover the number on the pig.



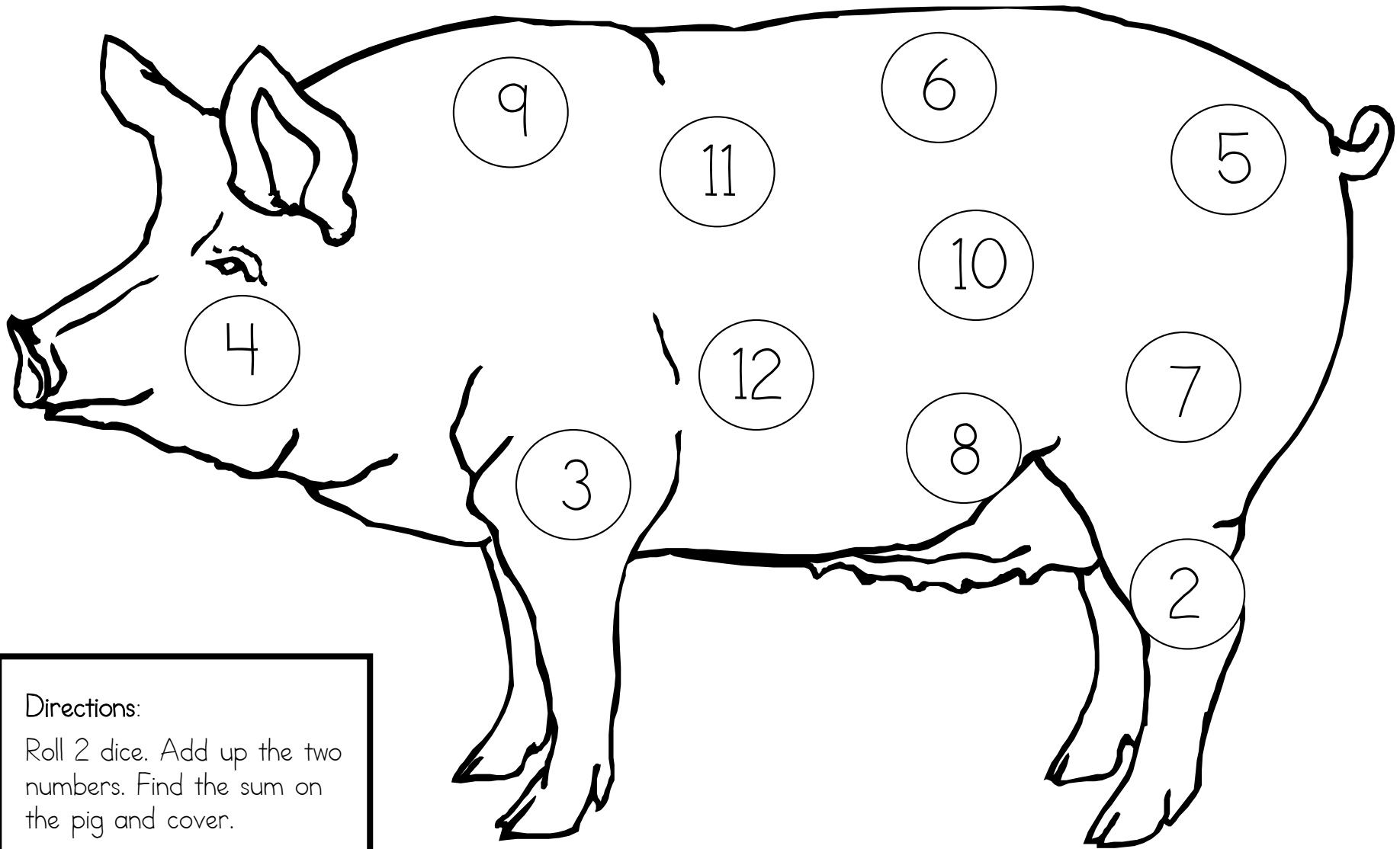
Directions:

Roll 1 die. Count the number of dots. Find and cover the number on the pig.



Directions:

Roll 2 dice. Add up the two numbers. Find the sum on the pig and cover.



Directions:

Roll 2 dice. Add up the two numbers. Find the sum on the pig and cover.

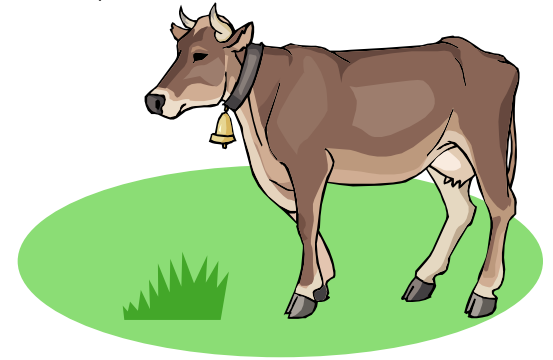


# How Many Cows in the Field?

Print the mat and number cards onto cardstock and laminate for durability.

## VERSION 1 (easier)

- \*Place some cows on the field mat.
- \*Ask your child to count the number of cows.
- \*Help him locate the number (from Number Cards 1-20\*).



## VERSION 2 (harder)

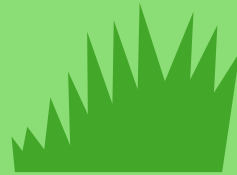
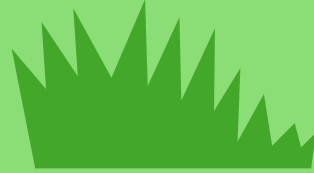
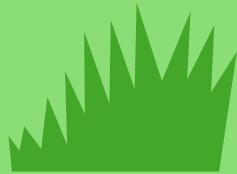
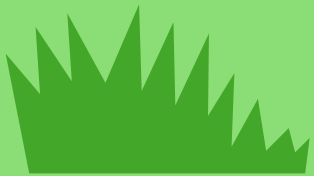
- \*Place some cows on the field mat.
- \*Ask your child to count the number of cows.
- \*Help him locate **and** trace the correct number (with the number tracer cards)

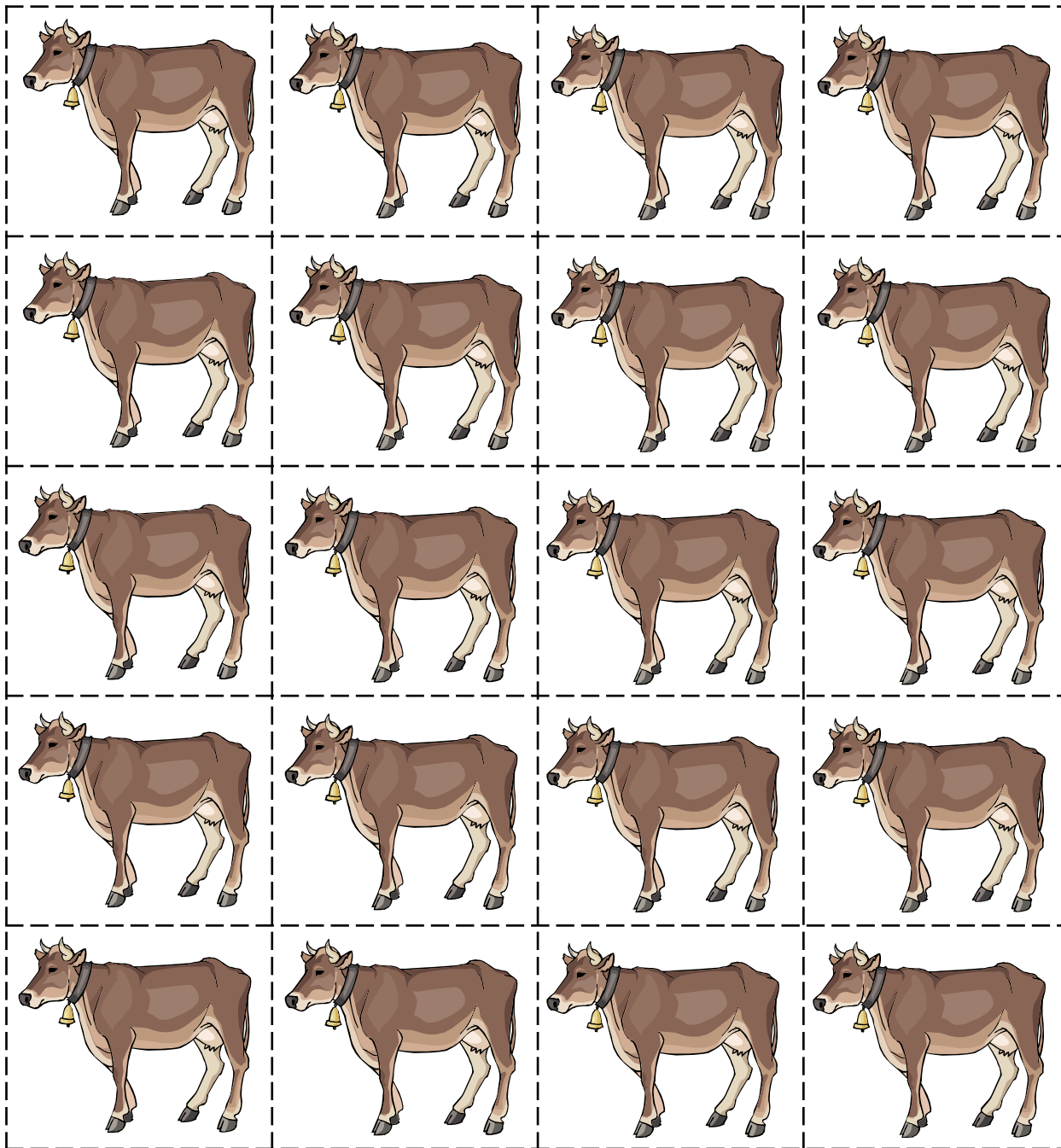
## VERSION 3 (hardest)

- \*Place some cows on the mat and then some more.
- \*Pose is as a problem to the child such as "There were 2 cows in the field. Then 3 more came to eat grass. How many cows are in the field now?"
- \*The child solves the problem and locates the number (from Number Cards 1-20) OR locates and traces the number (with the number tracer cards.)

Those children who are ready for it could write the number without tracing or write the number sentence!

\*Number Cards 1-20 are on pg. 22 of this pack.





Cut out the cows and use to place on the field mat.

1

2

3

4

5

6

7

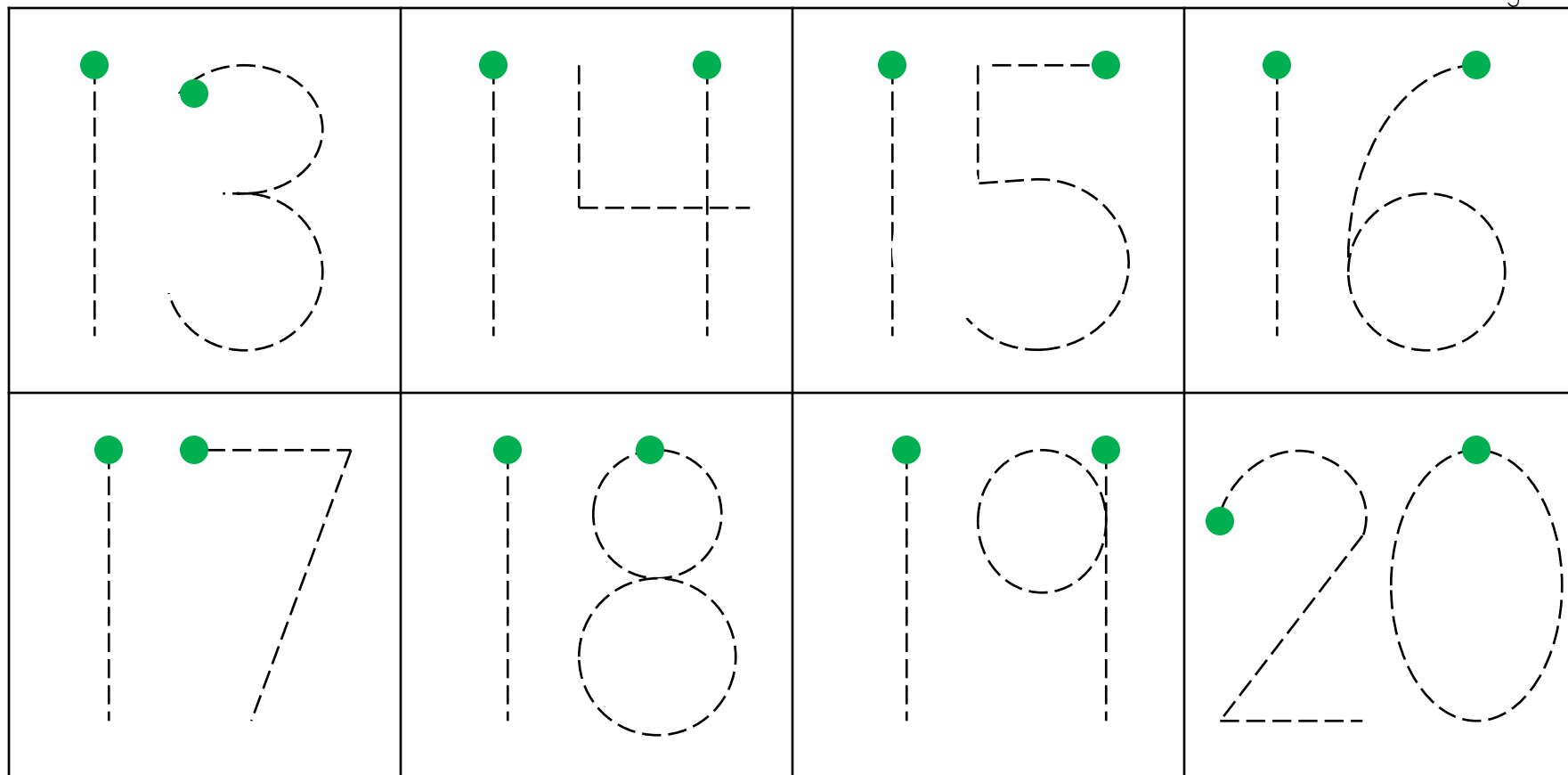
8

9

10

11

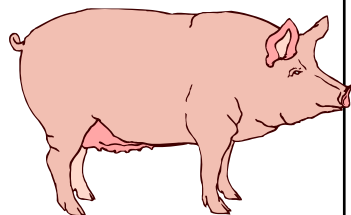
12



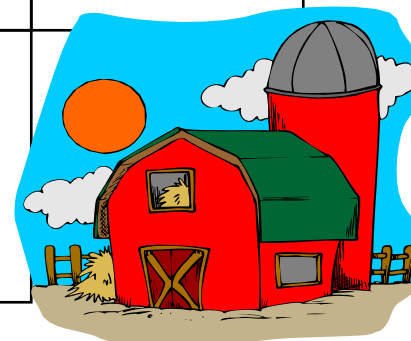
\*The green dot indicates where the child should start writing the number.

# FARM MAZE

Can you get the pig to the barn by drawing a path from 1-10?

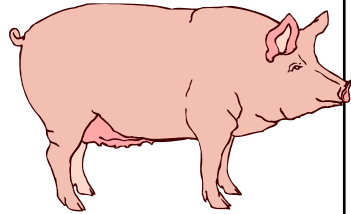


	10	3	5	1
1	2	6	8	3
4	3	2	9	10
5	6	7	8	

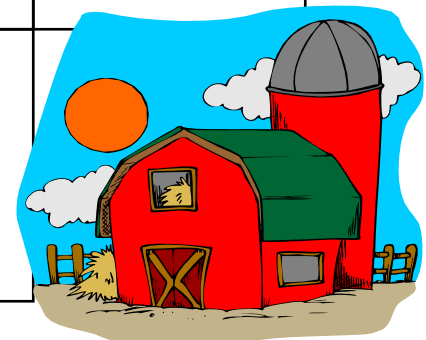


# FARM MAZE

Can you get the pig to the barn by drawing a path from 11-20?

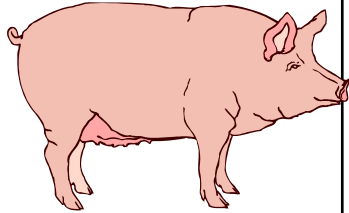


	13	11	5	12
11	8	17	18	19
12	10	16	11	20
13	14	15	8	

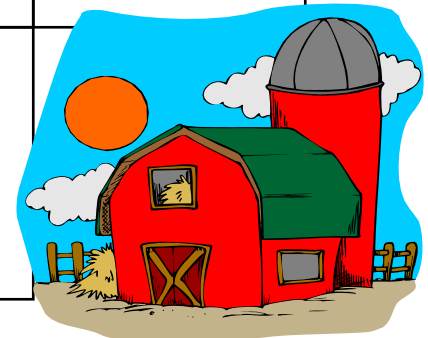


# FARM MAZE

Can you get the pig to the barn by drawing a path from 2-20?



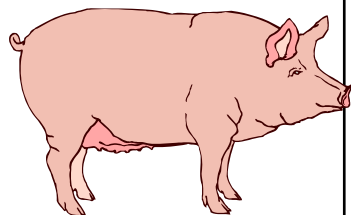
	2	8	4	12
6	4	12	16	18
8	20	16	18	20
10	12	14	11	



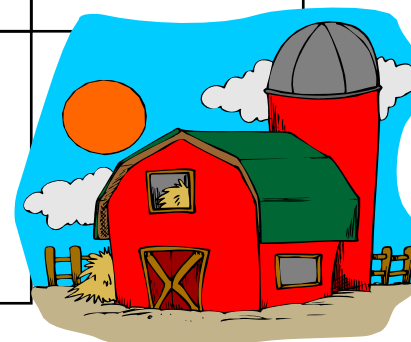


# FARM MAZE

Can you get the pig to the barn by drawing a path from 5-50?

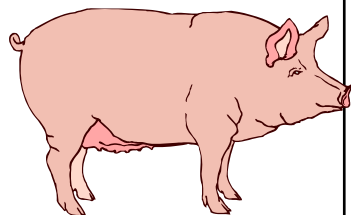


	20	50	5	10
5	55	35	40	45
10	45	30	15	50
15	20	25	10	

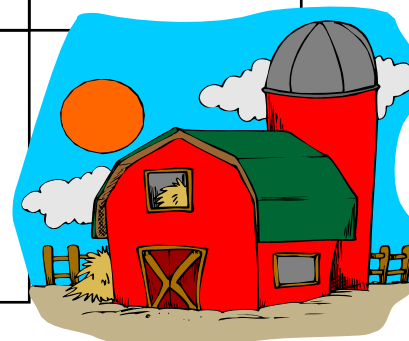


# FARM MAZE

Can you get the pig to the barn by drawing a path from 10-100?



	10	20	30	60
30	60	50	40	10
90	70	30	20	60
10	80	90	100	





cow



calf



horse



foal



pig



piglet



chicken



chick

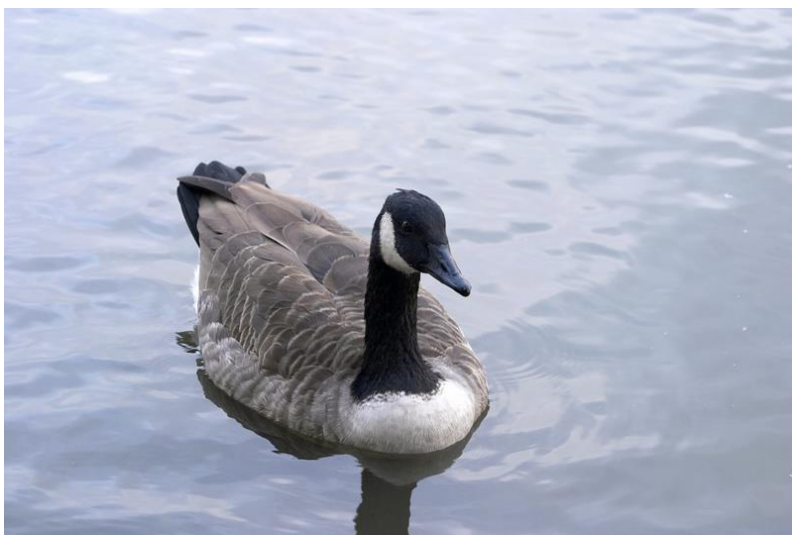




sheep



lamb



goose



gosling



dog



puppy



cat



kitten