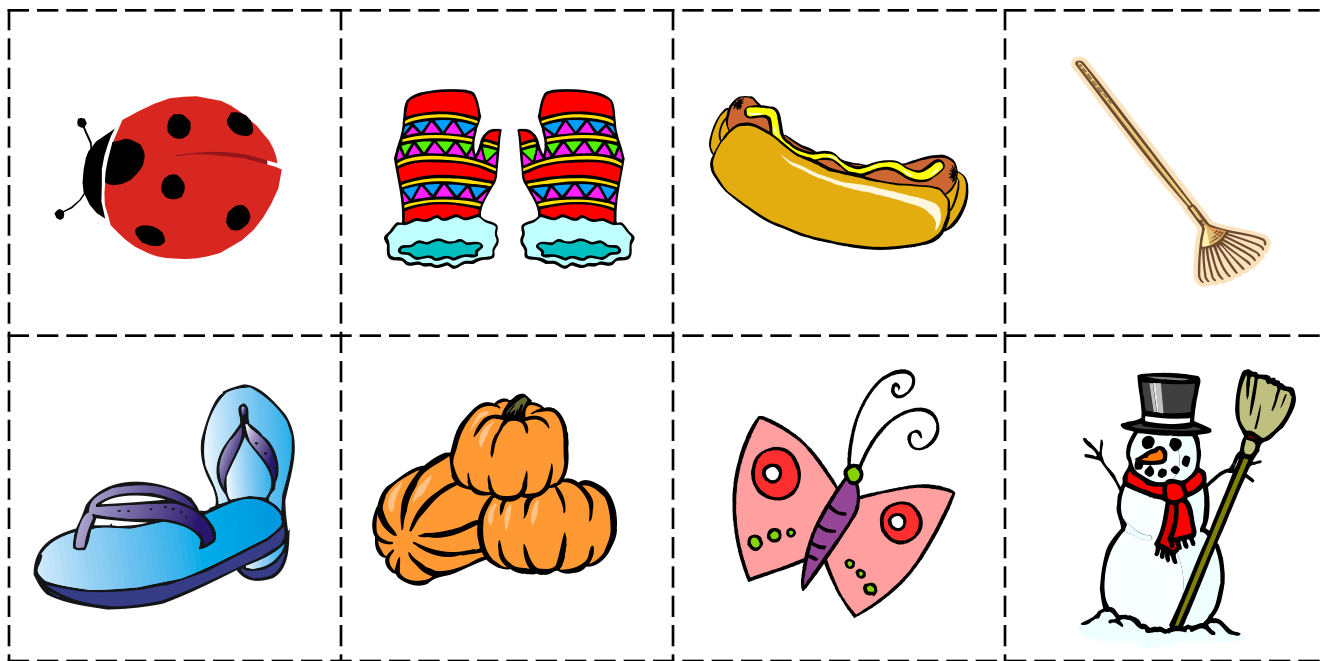


Cut apart the pictures below. Paste them on the four seasons tree page, matching the beginning sounds to each letter.



Picture Key: ladybug, mittens, hot dog, rake, flip flops, pumpkin, butterfly, snowman

Syllable Count and Clip

Four Seasons

Directions:

- *Print these cards onto cardstock, cut apart, and laminate for durability.
- *Lay one card out at a time on a work surface. Say the name of the picture like this "a-corns"; separating the syllables with a little pause. Do it again and clap once for each syllable.
- *Using a clothes pin, clip the correct number of syllables for each picture.
- *After modeling, let your child try it out!

Picture Key

1-Syllable Words: leaf, pool, sled, coat

2-Syllable Words: snowman, acorns, pumpkins, snowflake

3-Syllable Words: sandcastle, ladybug, butterfly, umbrella, sunglasses

4-Syllable Words: caterpillar



1

2

3

www.thisreadingmama.com



1

2

3

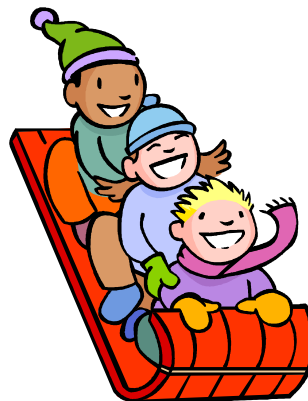
4



1

2

3



1

2

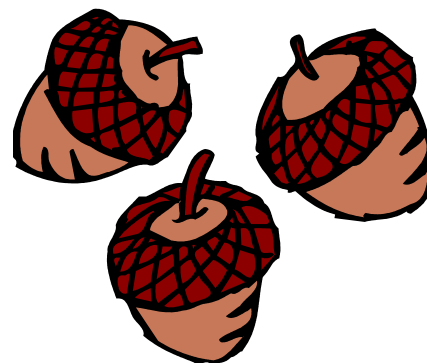
3



1

2

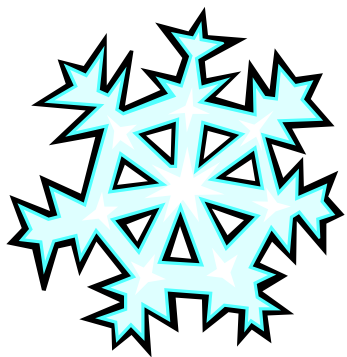
3



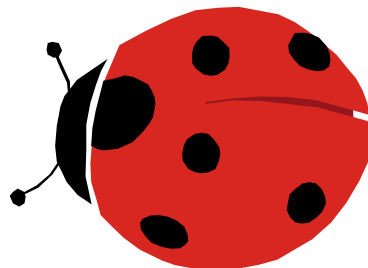
1

2

3



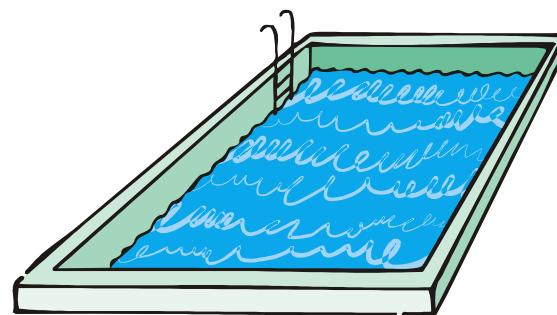
1	2	3
---	---	---



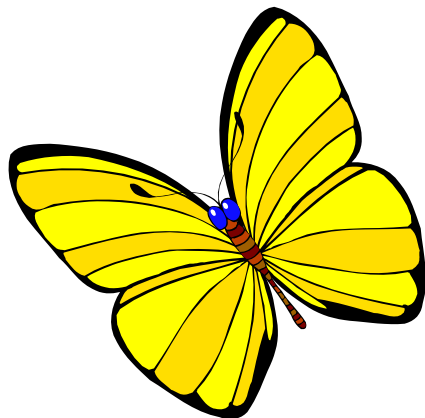
1	2	3
---	---	---



1	2	3
---	---	---



1	2	3
---	---	---



1	2	3
---	---	---



1	2	3
---	---	---



1	2	3
---	---	---

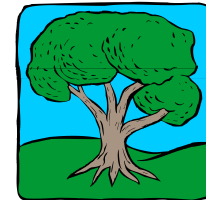
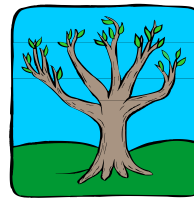
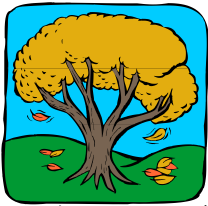


1	2	3
---	---	---

Four Seasons Print Awareness

Directions:

- Create a bare tree on a piece of paper with paint. (This can be simply done by painting your child's palm and wrist area brown. Once the hand and wrist are all painted, press it down on a piece of paper.) You could also use other mediums to create your trees.
- Once it dries, choose a season for the tree.
- Use art supplies to decorate the tree in that season. Examples: Winter- glue on cotton balls for snow, Fall- glue on tissue paper, etc.
- If your child chooses to do more than one season, you may want to divide this project up into several sittings or days.



- Cut out and mix up the sentences provided for each season. Please note that these are just examples. Feel free to use your own sentences.
- Lay out all the words so the child can see them. Say the sentence in the correct order and let the child help you put them back in the right order.
- Glue them down on paper and display them with your trees.
- Read the sentences out loud, pointing to each word as you read it.
- Ask the child to give it a try, too!

Fall Tree Sentence

My	tree	has
colorful	leaves.	

Winter Tree Sentence

My	tree	is
covered	with	snow.

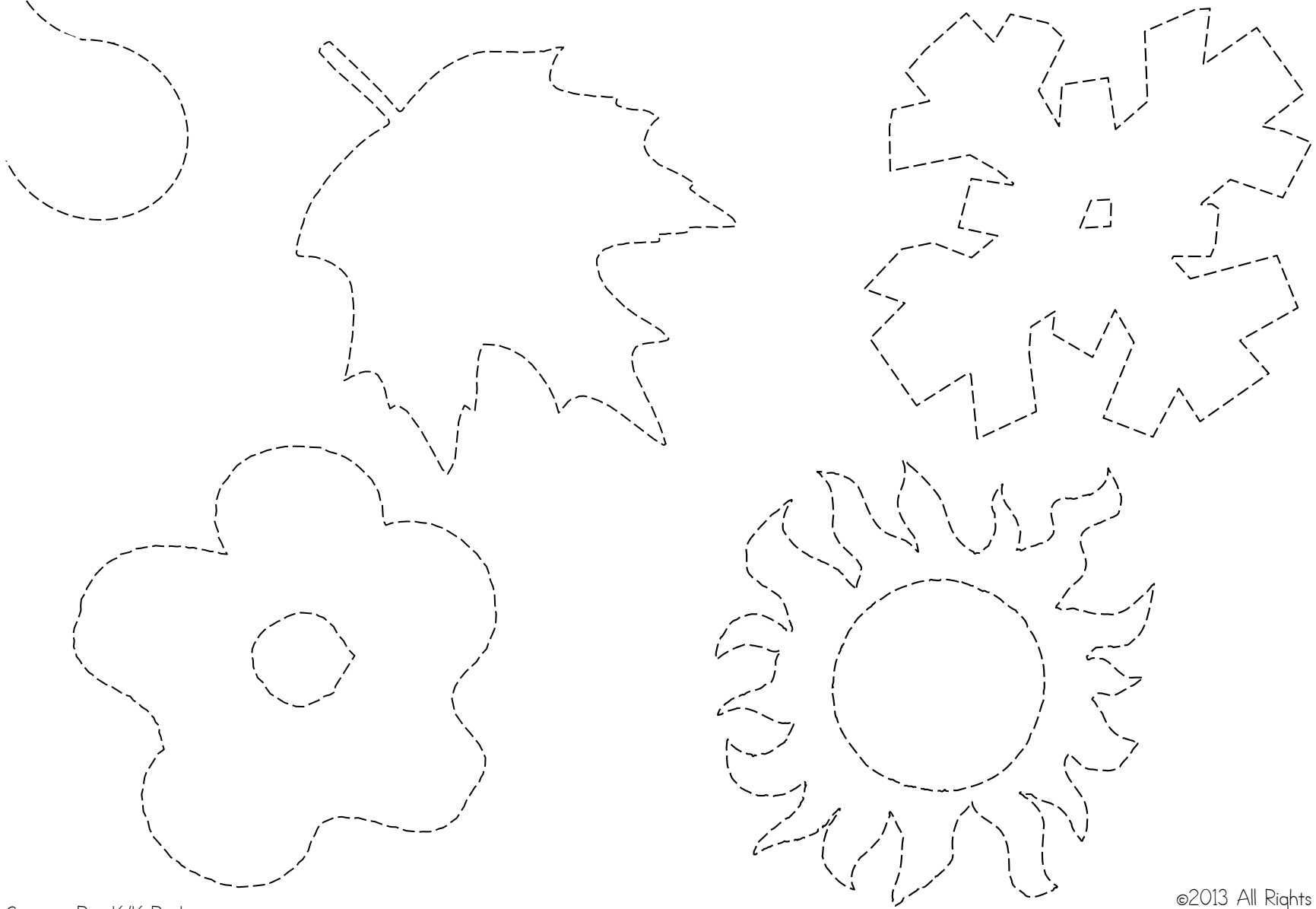
Spring Tree Sentence

My	tree	has	
beautiful		blooms.	

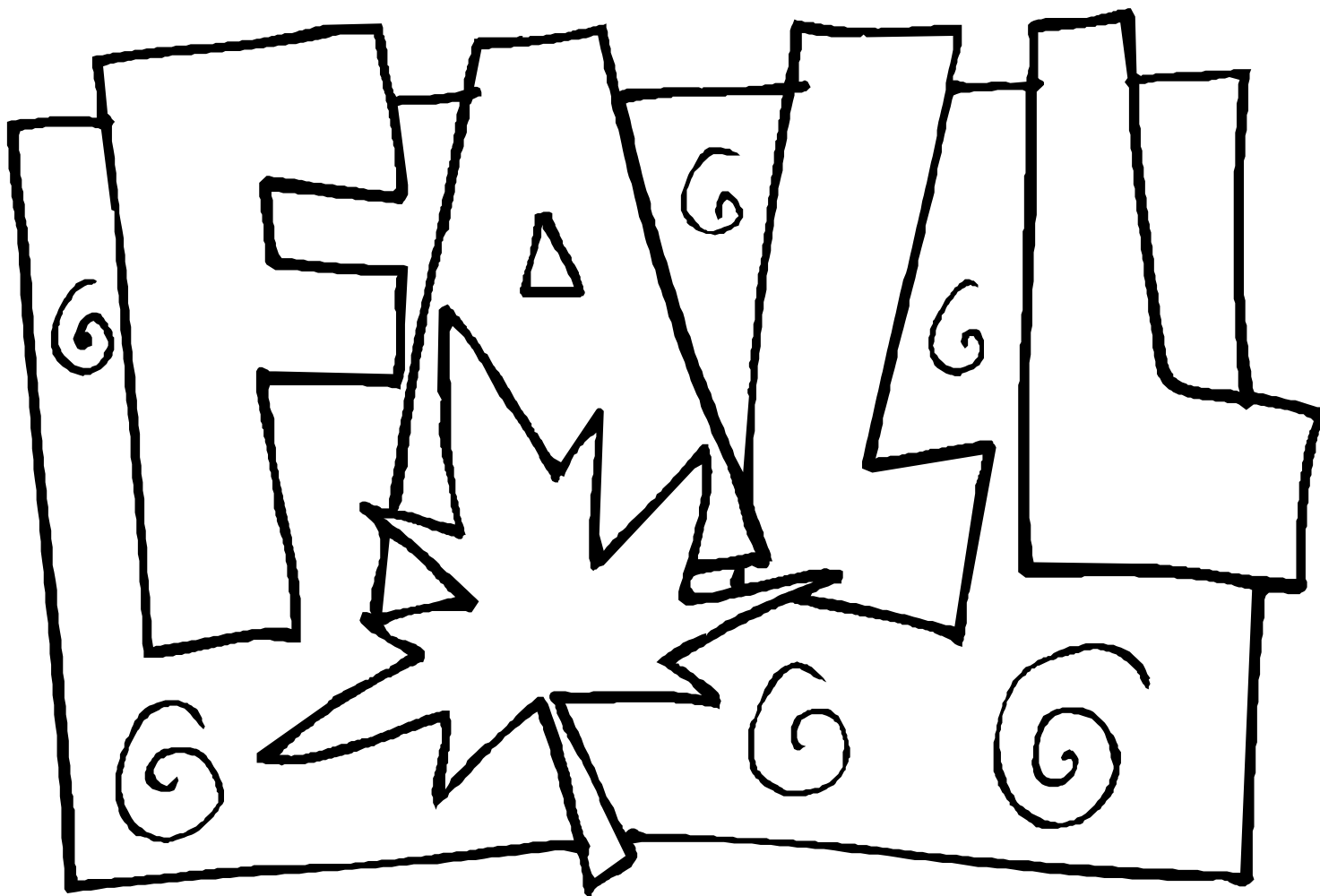
Summer Tree Sentence

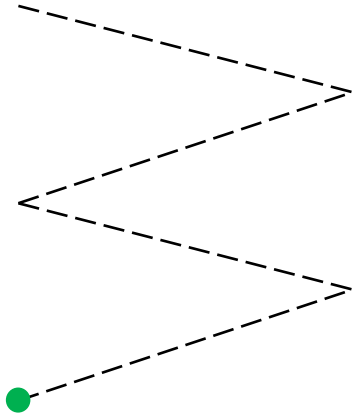
My	tree	has
lots	of	leaves.

S is for seasons

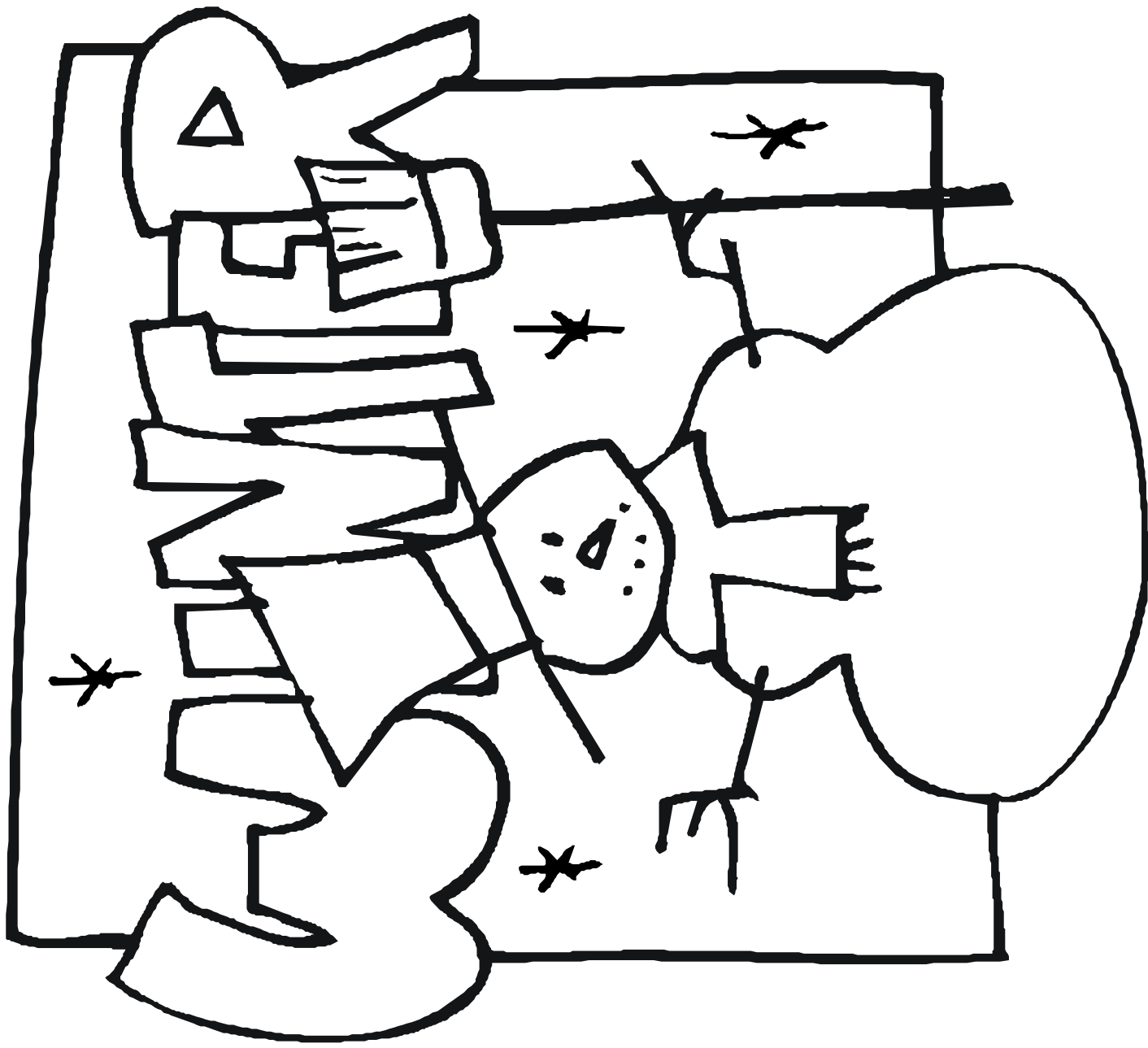


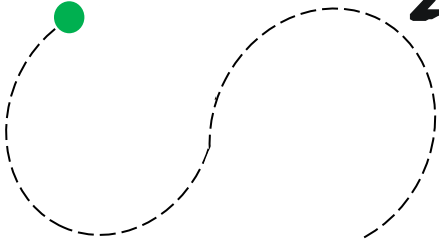
is for fall



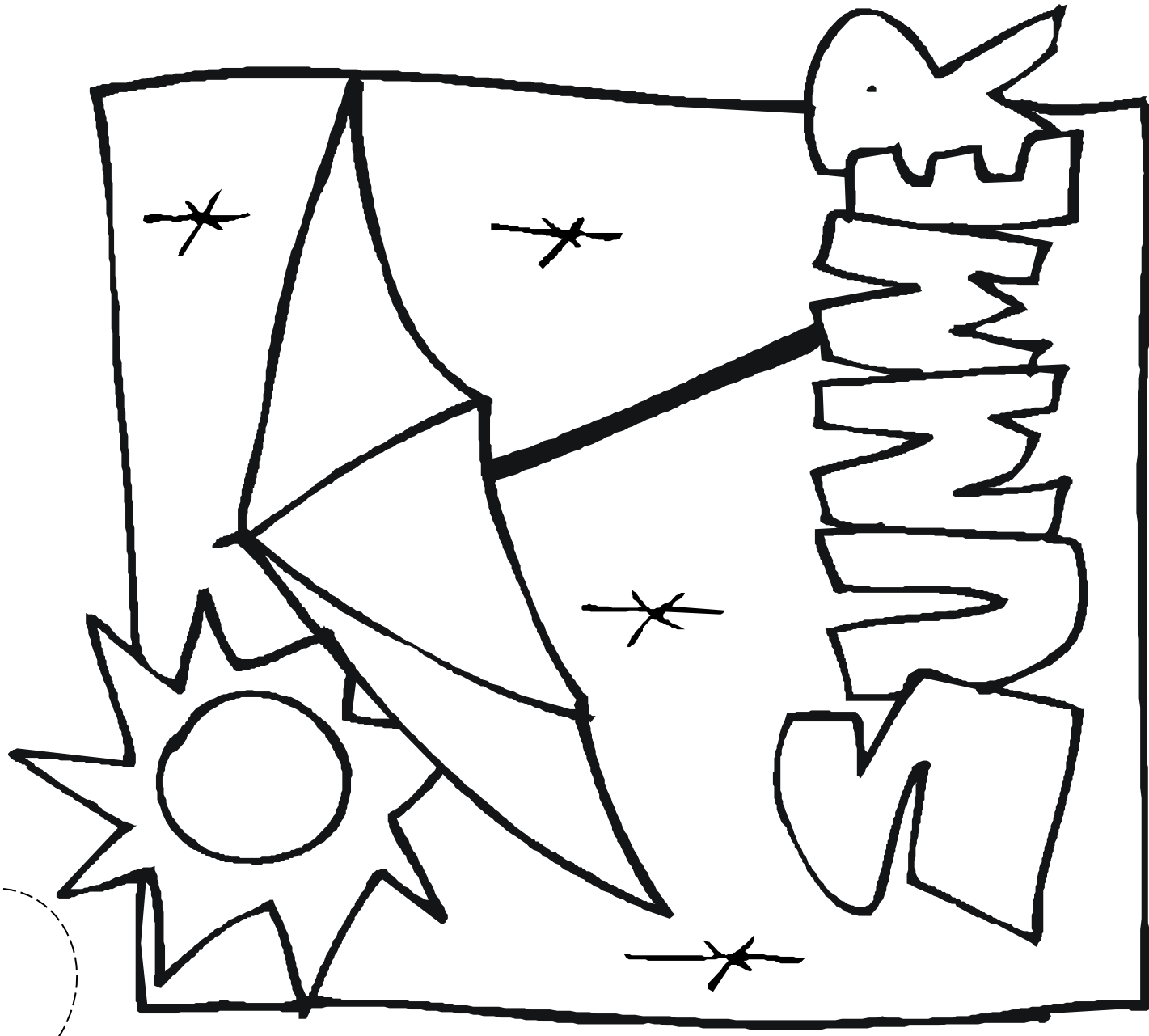


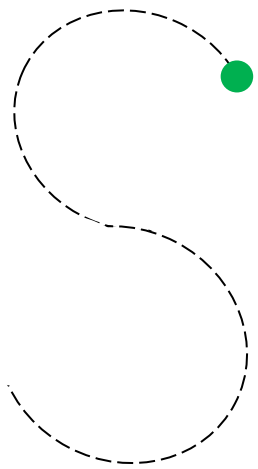
is for winter



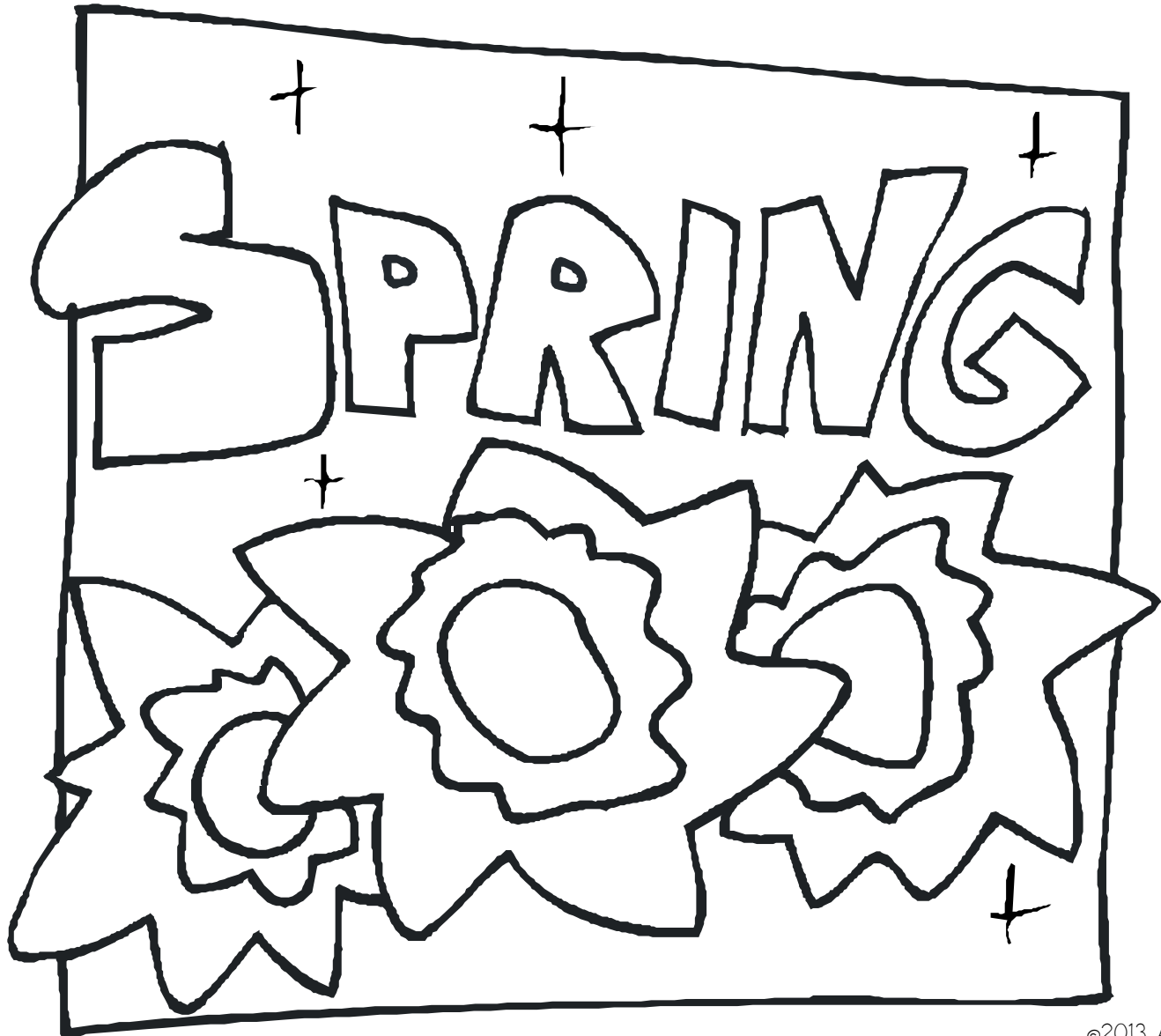


is for summer





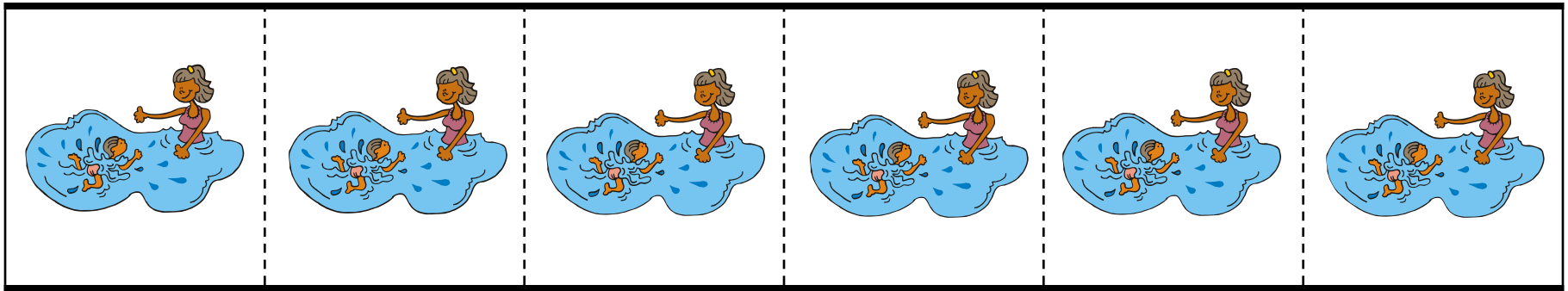
is for spring



Four Seasons Cut & Pattern Cards

*I recommend printing these onto cardstock to make it easier for the child to cut.

*To prepare for the child, cut along the darker, horizontal lines first to create 4 separate strips. (like the strip below)



*Give the strips to the child and ask her to cut along each dotted line to make six separate picture cards for each row.

*This can be used as a stand-alone cutting activity OR the little cards can then be used to make patterns together with your child.



Four Seasons Cut & Pattern Cards

fall



winter



spring



summer

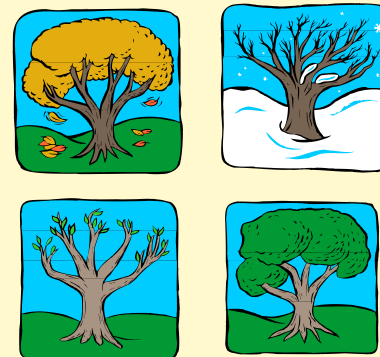


Dressed for the Season

20-Grid

To Prep:

- *Print onto cardstock and laminate for durability.
(Print one seasonal tree game board and one article of clothing page for each player)
- *Cut apart all articles of clothing cards on dotted lines.
- *Locate a die, labeled 1-6.



To Play: (for 2 players)

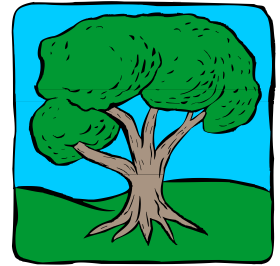
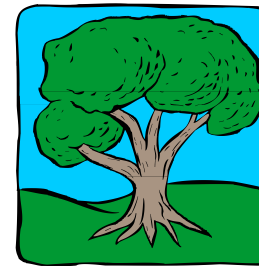
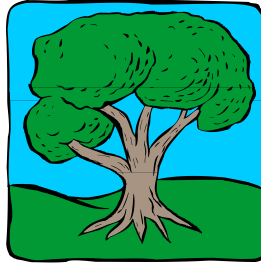
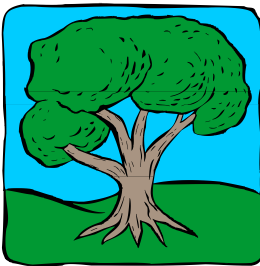
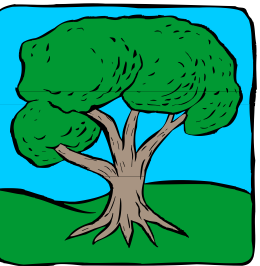
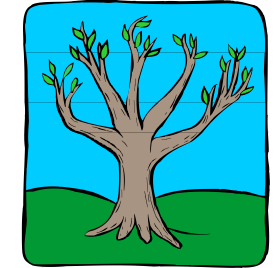
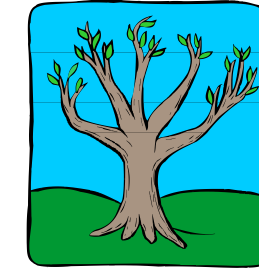
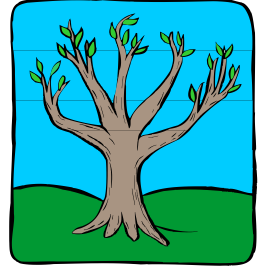
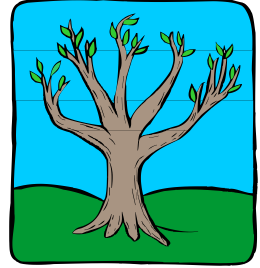
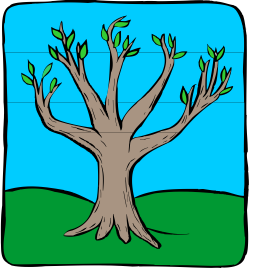
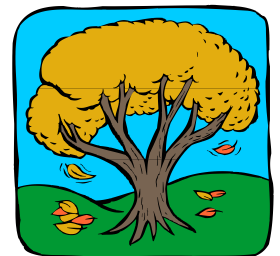
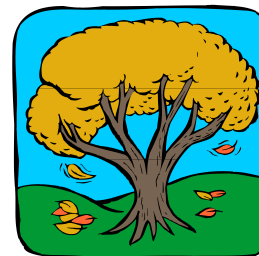
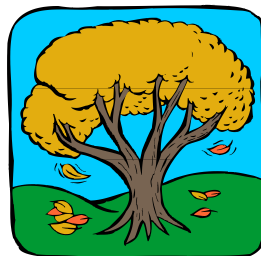
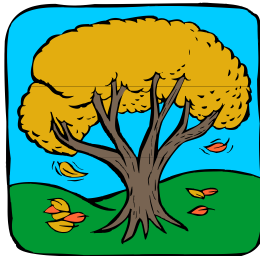
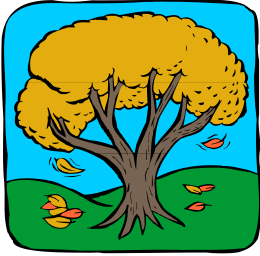
- *Each player needs a seasonal tree game board and 20 articles of clothing pieces.
- *Before playing, identify the season on each row of trees and the article of clothing you could wear with each season. (fall-jacket, winter-hat, spring-raincoat, summer- flip flops)
- *The first player rolls the die, counts the number of dots, and places that many articles of clothing on top of his seasonal tree board, making sure he "dresses" correctly for the season. Players start at the top left and moving to the right, like when reading. For example, if the player rolls a 2, he takes two jackets and covers up two fall trees to "dress" for the season.
- *The first player to dress for all the seasons, wins! He can even shout, "I'm dressed!"

Variations:

- *If only one person is playing, he continues to roll and count the die, placing articles of clothing onto his game board until they are all covered.
- *Use the clothing page as cutting practice. Simply cut along all the horizontal lines and ask the child to cut along all the vertical lines.

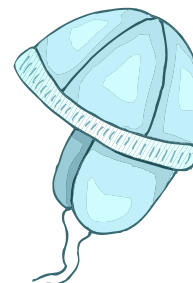
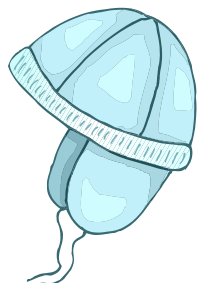
Dressed for the Season

game board



Dressed for the Season

articles of clothing



How Many Trees in the Field?

Print the mat and number cards onto cardstock and laminate for durability.

VERSION 1 (easier)

- *Place some trees on the field mat.
- *Ask your child to count the number of trees.
- *Help him locate the number (from Number Cards 1-20*).

VERSION 2 (harder)

- *Place some trees on the field mat.
- *Ask your child to count the number of leaves.
- *Help him locate **and** trace the correct number (with the number tracer cards)

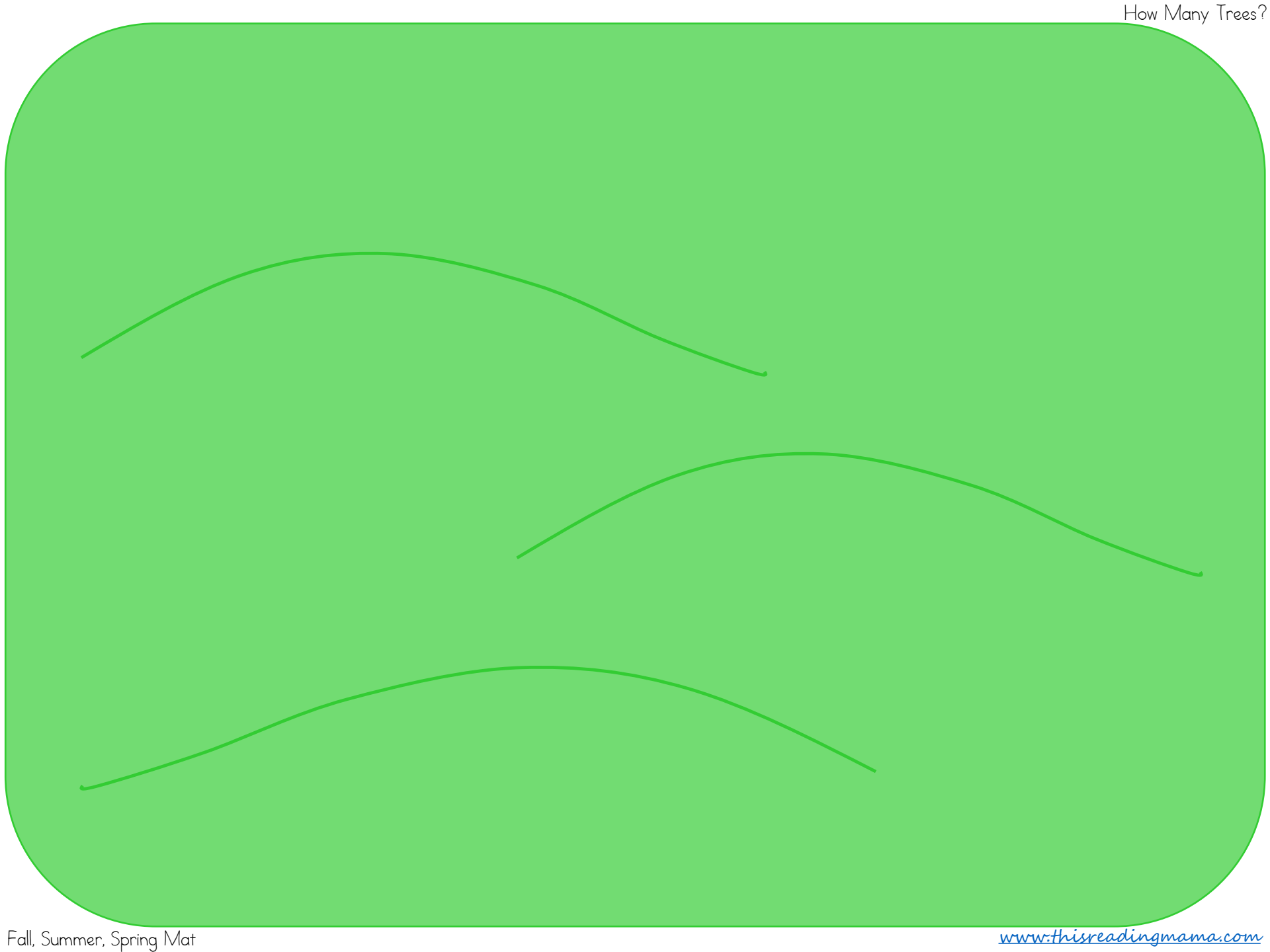
VERSION 3 (hardest)

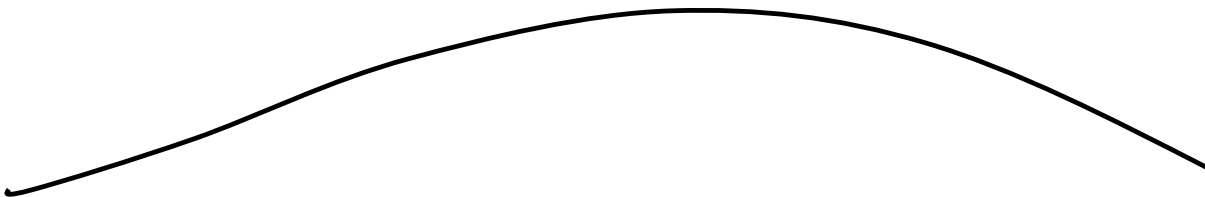
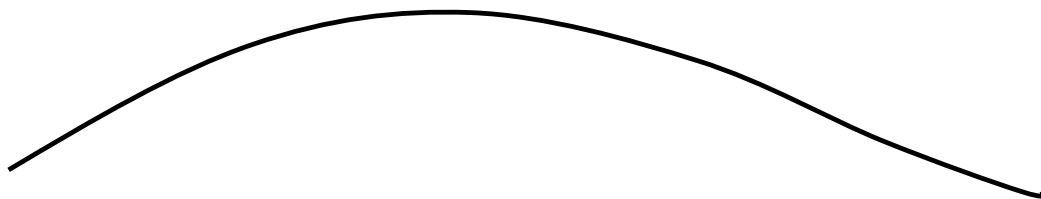
- *Place some trees on the mat and then some more.
- *Pose is as a problem to the child such as "As I was riding in the car, I saw 2 trees in the field. Then I saw 4 more. How many trees did I see?"
- *The child solves the problem and locates the number (from Number Cards 1-20) OR locates and traces the number (with the number tracer cards.)

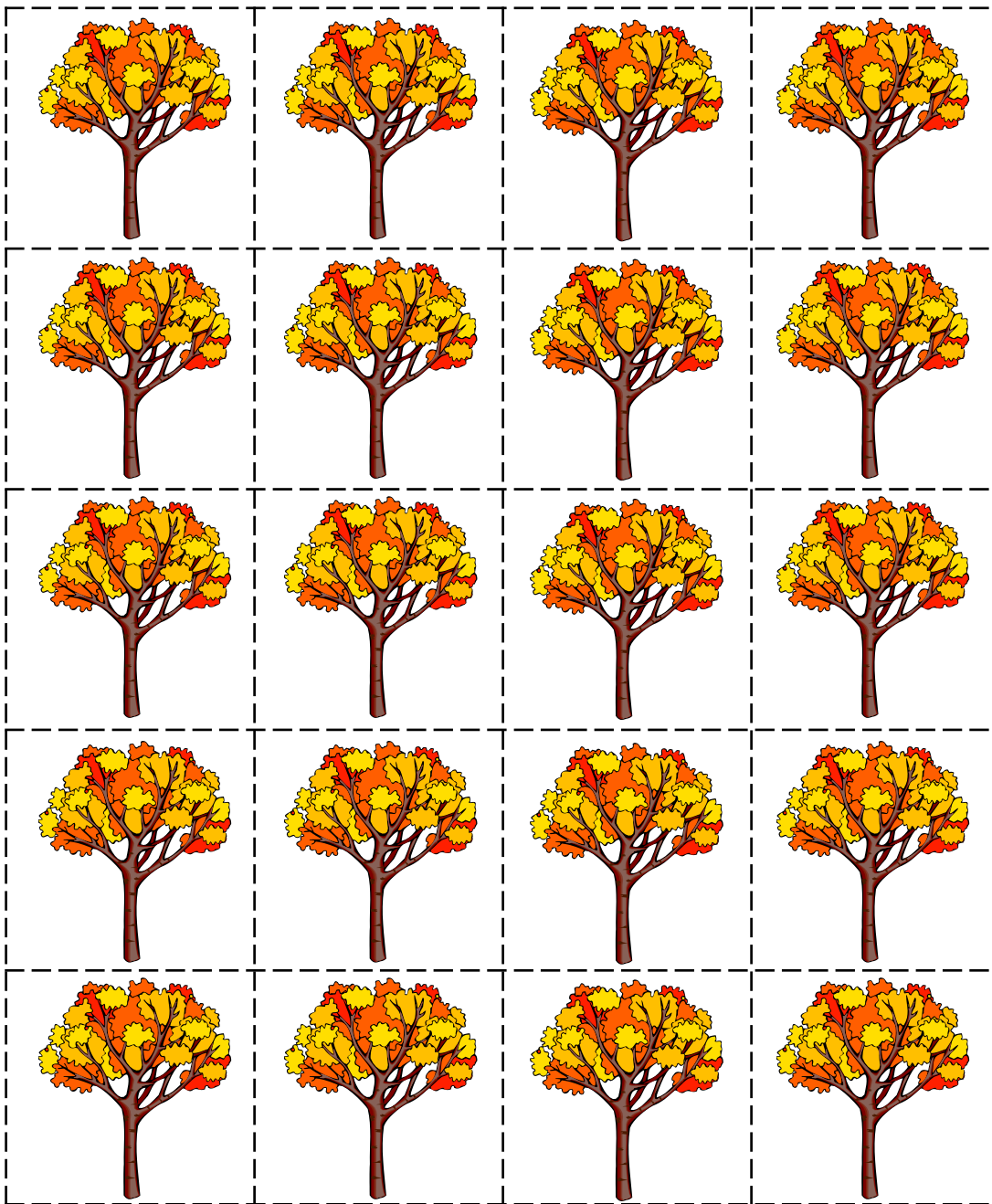
Those children who are ready for it could write the number without tracing or write the number sentence!

Note: There are 2 field mats and 4 different kinds of trees, depending on the season you'd like to use.

*Number Cards 1-20 are in Part 1 of this Four Seasons Pack.

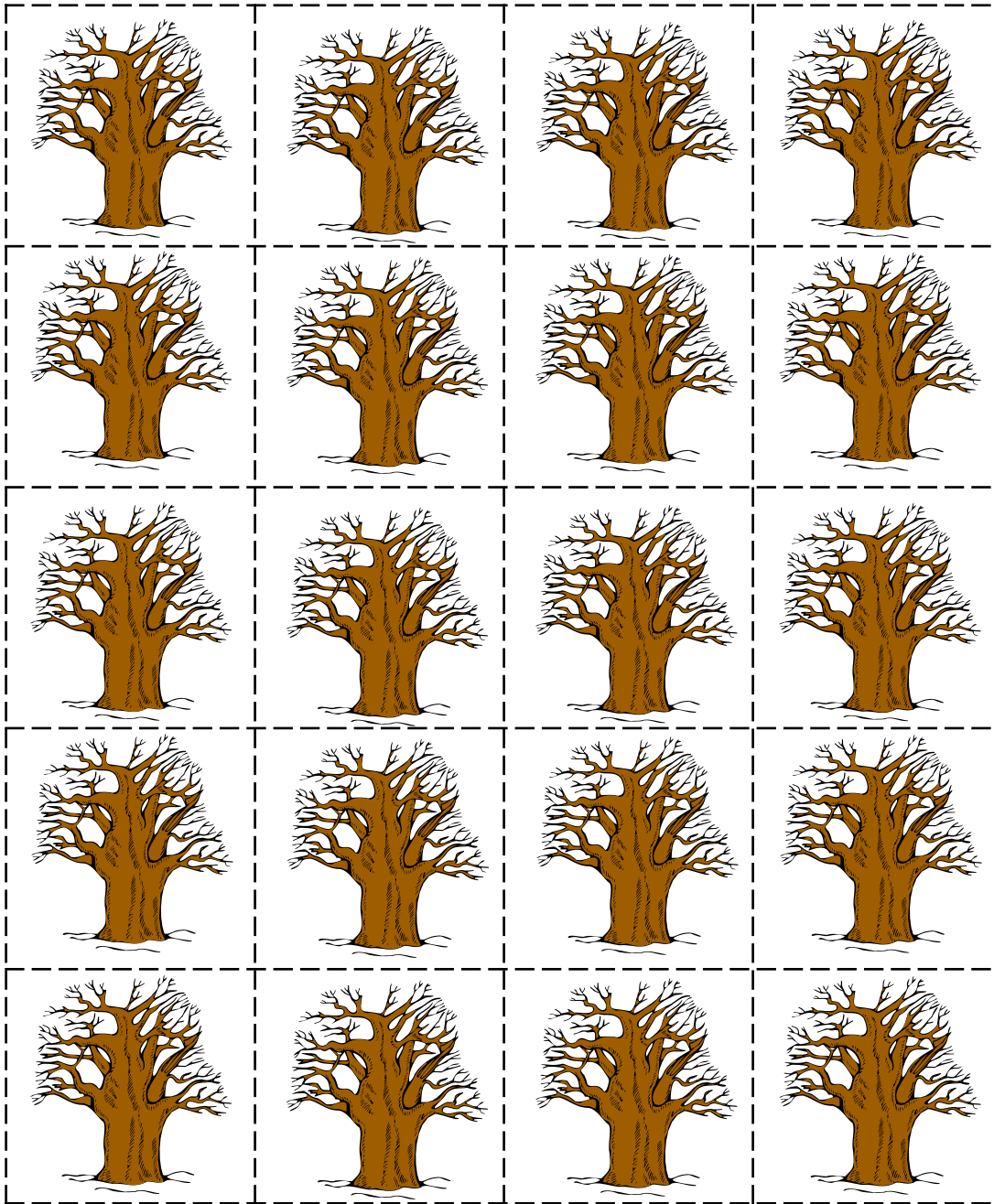


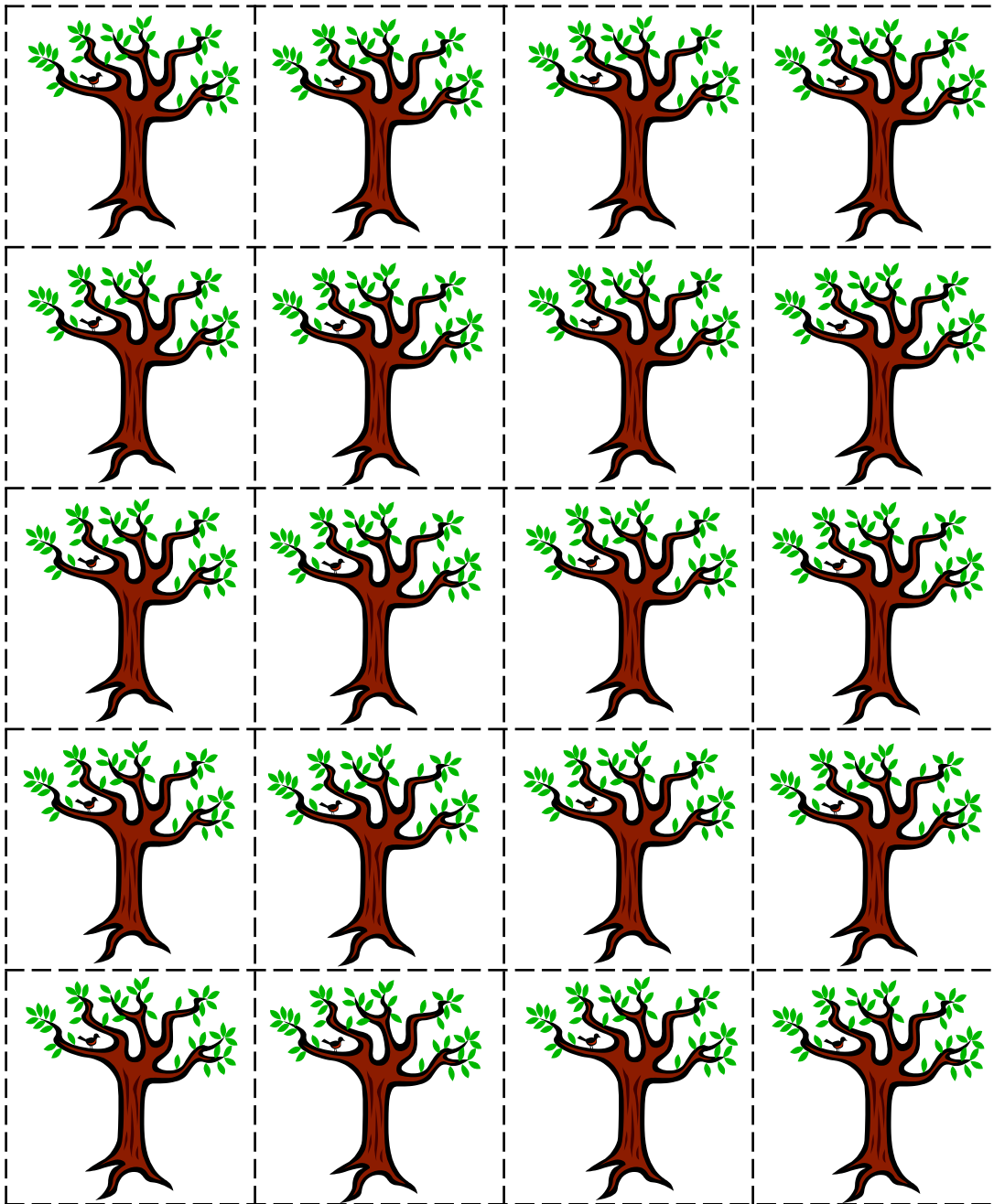




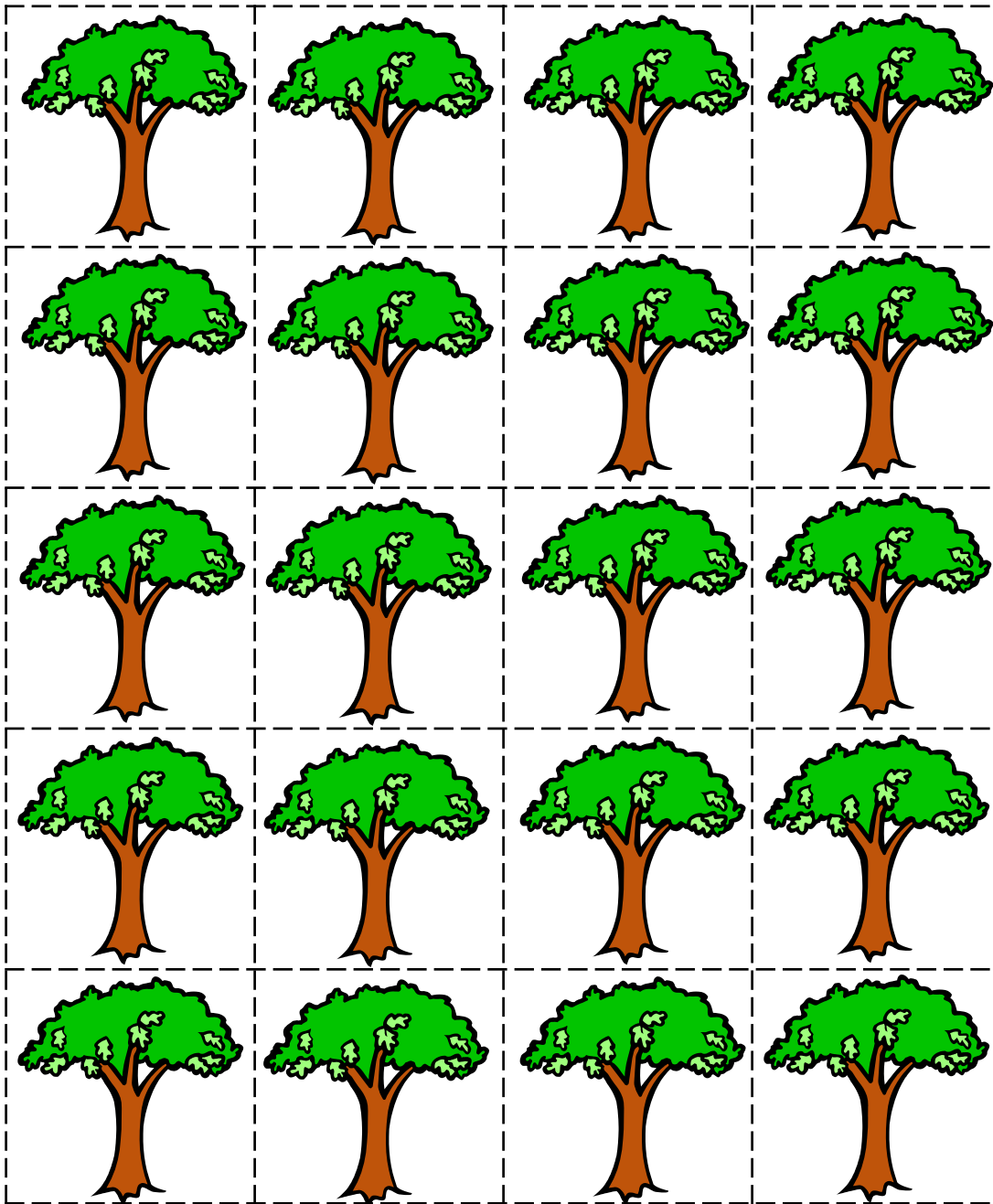
Cut out the fall trees and use to place on the field mat.

Cut out the winter trees and
place on the field mat.





Cut out the spring trees and place on the field mat.



Cut out the summer trees and place them on the field mat.

1

2

3

4

5

6

7

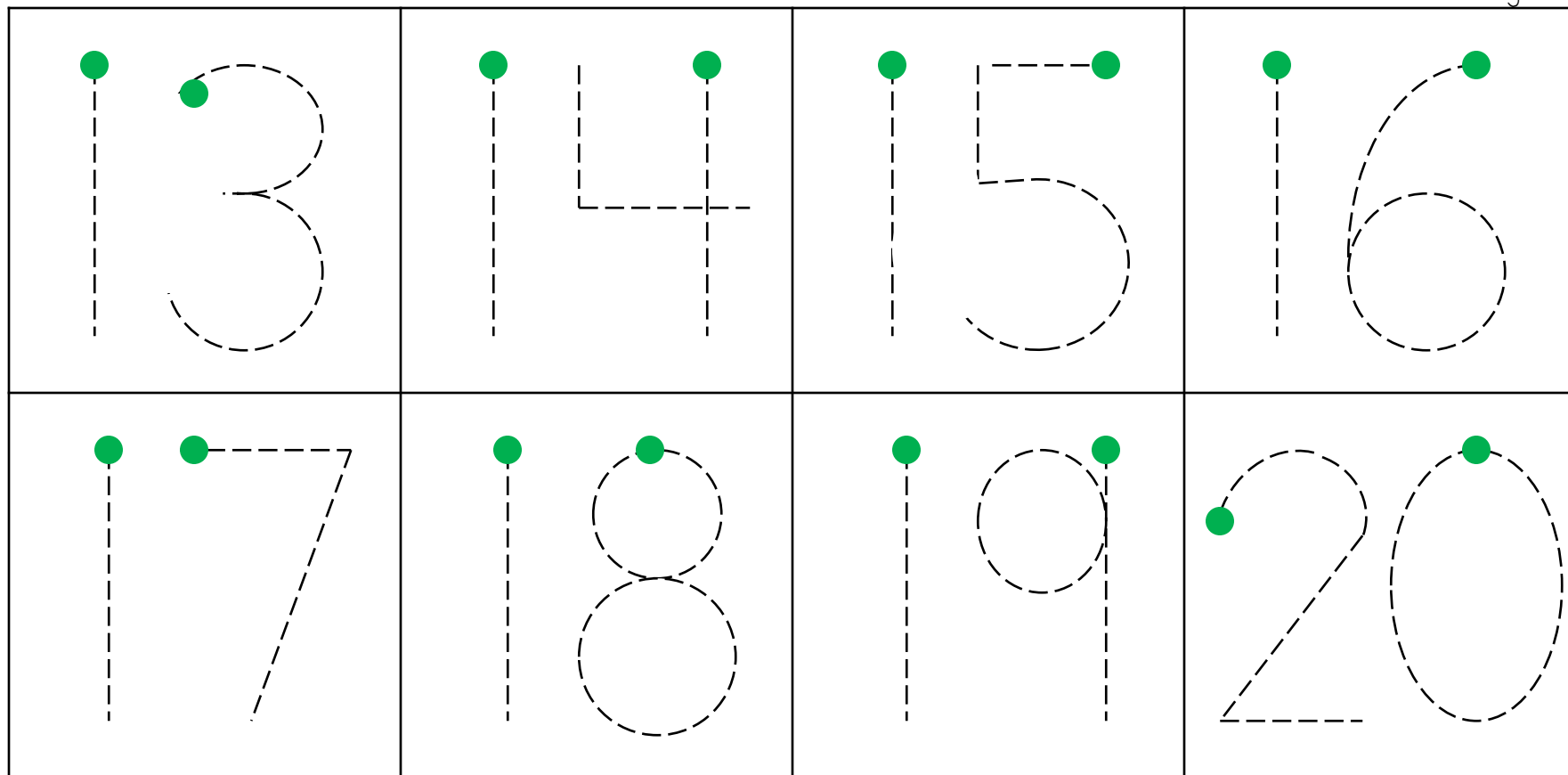
8

9

10

11

12




*The green dot indicates where the child should start writing the number.

SEASONAL MAZE

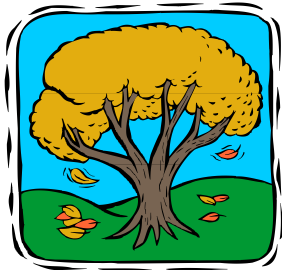
Can you turn the season from fall to winter by drawing a path from 1-10?




	3	4	5	3
1	2	10	6	2
7	4	8	7	4
4	6	9	10	

SEASONAL MAZE

Can you turn the season from fall to winter by drawing a path from 11-20?



	11	15	18	11
13	12	20	14	17
14	10	18	19	20
15	16	17	13	

SEASONAL MAZE

Can you turn the season from fall to winter by drawing a path from 2-20?

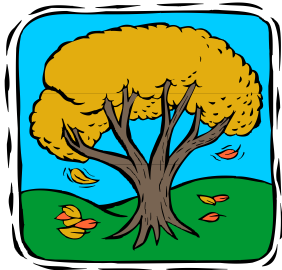



	2	8	10	4
18	4	6	12	14
12	10	12	18	16
20	4	2	20	



SEASONAL MAZE

Can you turn the season from fall to winter by drawing a path from 5-50?



	5	20	50	10
20	10	35	40	45
45	15	30	5	50
30	20	25	15	

SEASONAL MAZE

Can you turn the season from fall to winter by drawing a path from 10-100?



	10	20	30	40
40	100	70	60	50
30	10	80	50	20
90	30	90	100	

