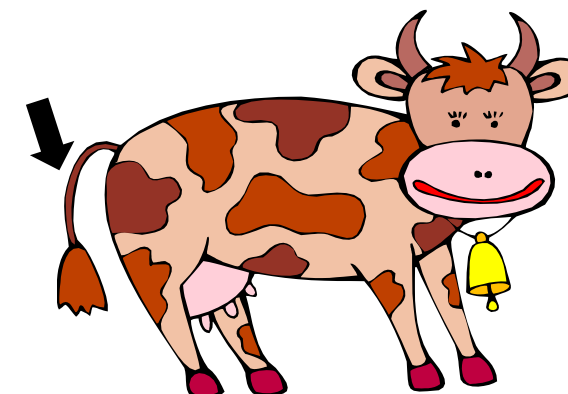


Long Vowel BINGO



To Prep:

- Print one game board per player (for 2-6 players)
- Laminate each board or place in a plastic sheet protector for multiple uses and durability.
- Gather BINGO chip counters or use dry erase marker to cross through words on the game boards.
- Print Blend Bingo picture cards on cardstock. Cut out and laminate for durability.

Terms of Use: This free printable was created for you to use at home with your child/students or with multiple children in a classroom/tutoring setting. Please **do not** sell, host, reproduce, giveaway, or store on any other site (including a blog, Facebook, 4Shared, Dropbox, etc.). Thank you!

To Play:

- (Each person needs a game board and something with which to cross off or cover up the words on her board).
- Turn the Long Vowel Bingo picture cards facedown in a pile.
- Players take turns picking a picture card, turning it over, and calling out the word.
- All players look for that word on their BINGO board (it does not matter which column it is in).
- The first player to cover all her words in a row wins and shouts, "BINGO!" (You can choose to play many different ways. For example: whoever covers all four corners or whoever covers all their words in a particular column first, etc.).

B

I

N

G

O

train

toe

die

blue

read

road

day

three

fight

stew

spoon

cry

queen

chain

blow

peach

chew

coat

pray

light

hay

knee

high

drew

croak

B

I

N

G

O

sheep

moon

knight

oak

play

hoe

new

beach

rain

pie

gray

green

load

night

clue

toad

paid

zoo

tie

feast

glue

sleep

paint

snow

right

B

I

N

G

O

fly

meat

scoop

tail

tow

load

beans

tray

pie

bloom

stew

train

knee

light

hoe

mow

blue

paint

read

sky

right

gray

beach

coat

clue

B

I

N

G

O

feast

mow

fight

spoon

play

chain

sheep

road

sky

zoo

high

beans

hay

toe

glue

scoop

tie

croak

sleep

tail

stew

blow

tray

knight

meat

B

I

N

G

O

toe

queen

paid

cry

moon

fly

pray

green

die

oak

light

tow

day

peach

new

drew

rain

snow

sheep

sky

chain

toad

three

clue

fight

B

I

N

G

O

blue

toad

sleep

train

night

bloom

hoe

pie

tail

beach

queen

chew

cry

day

coat

gray

read

knight

snow

moon

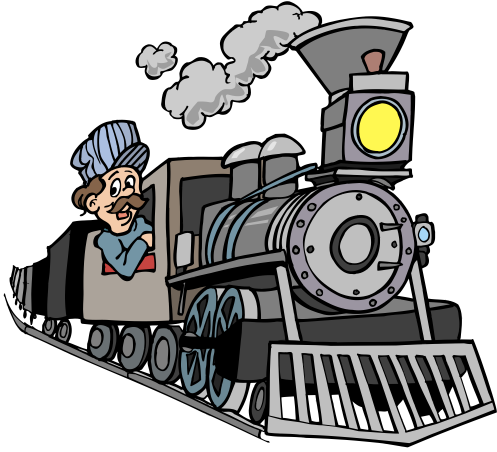
three

croak

scoop

high

rain

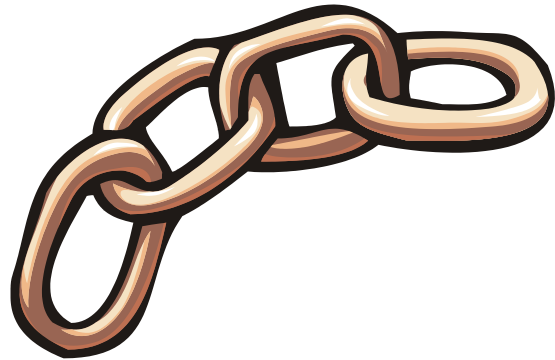


train

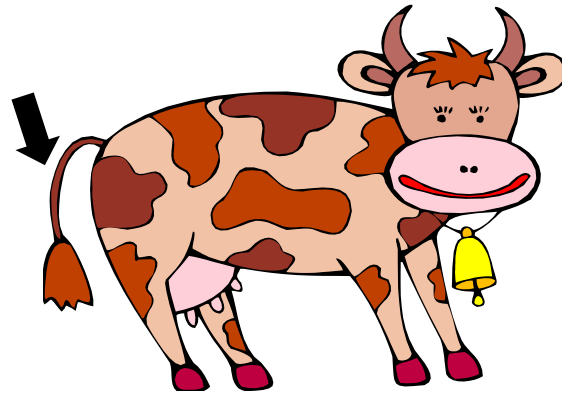
rain



paid

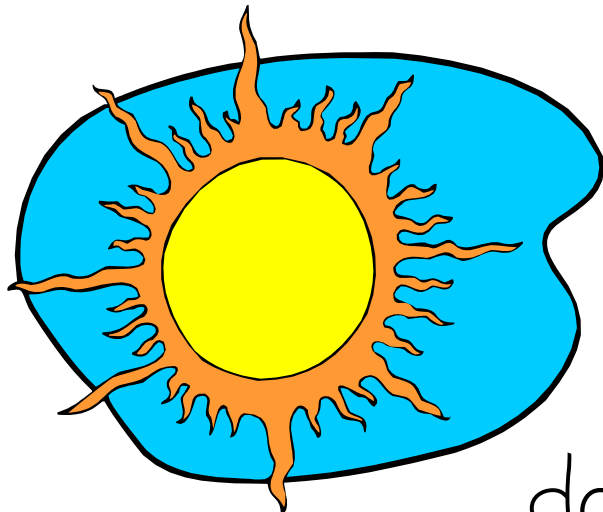


chain



tail

paint



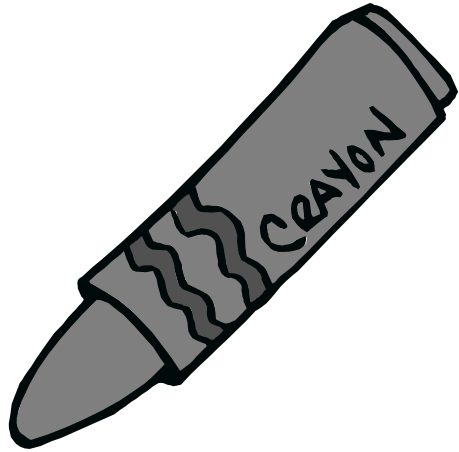
day



play



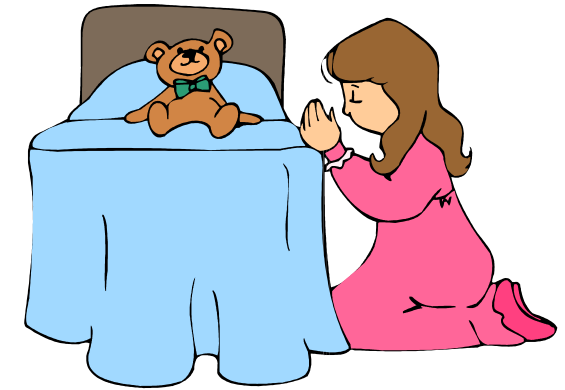
tray



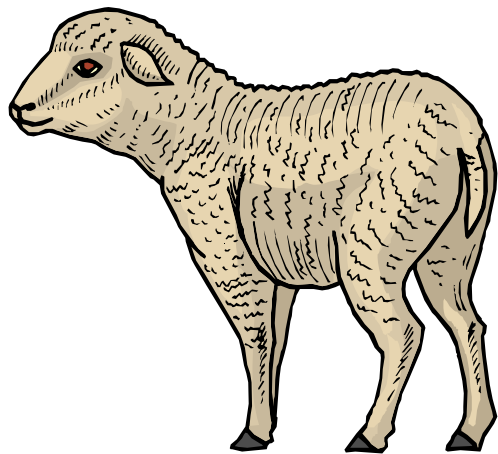
gray



hay



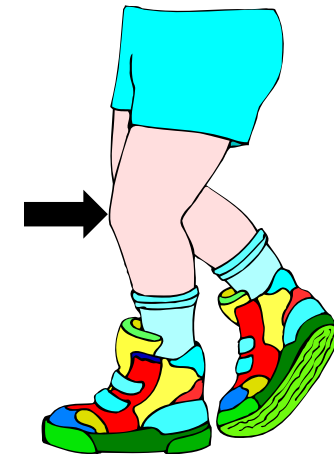
pray



sheep



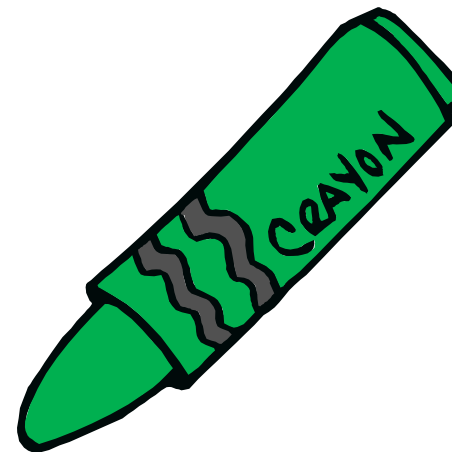
queen



knee



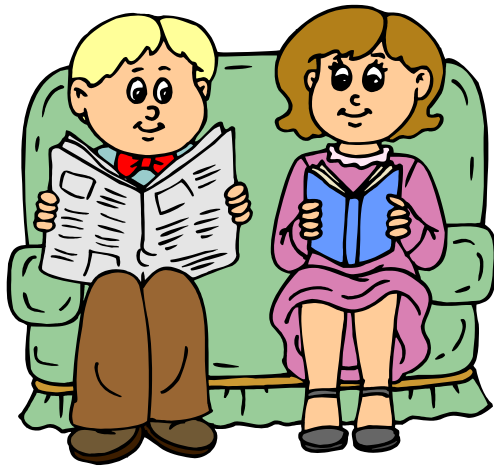
sleep



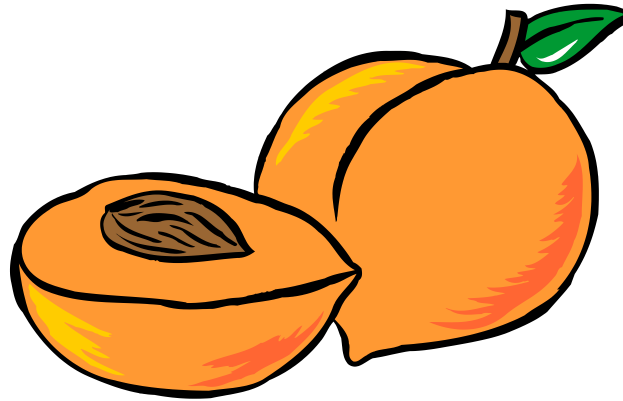
green



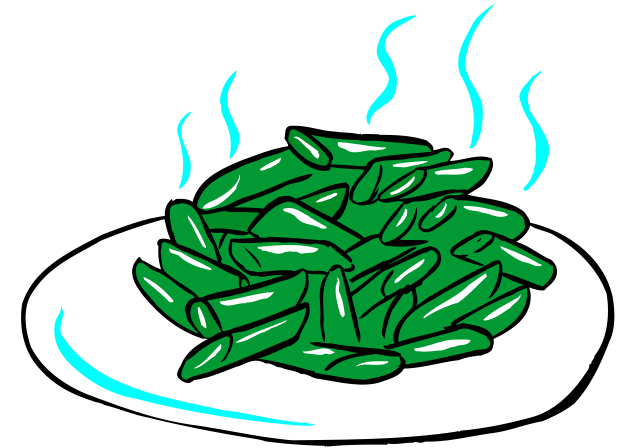
three



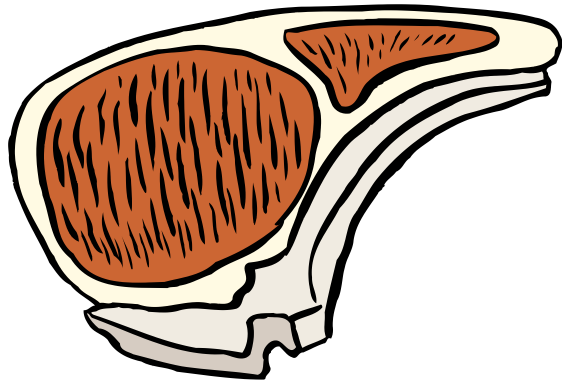
read



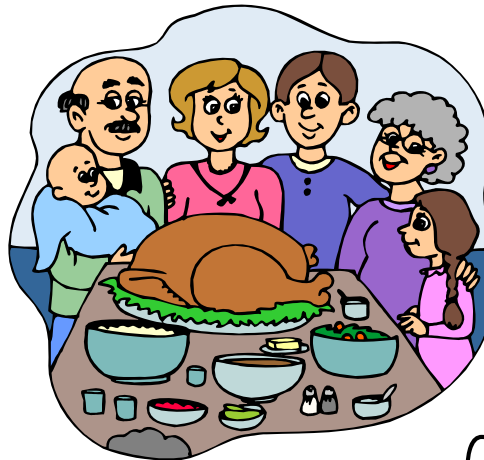
peach



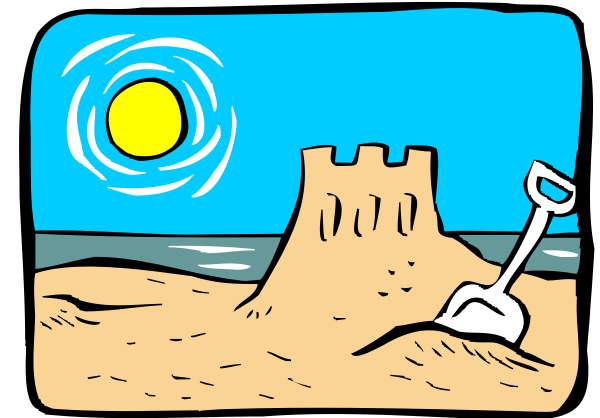
beans



meat



feast



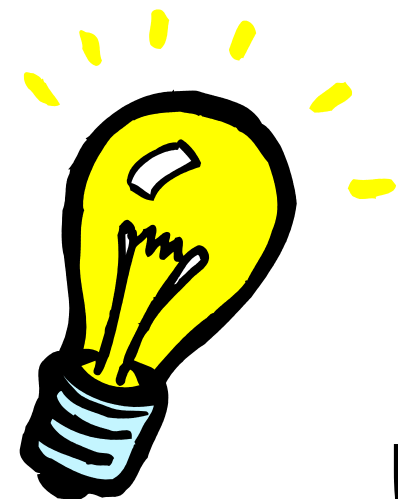
beach



fight



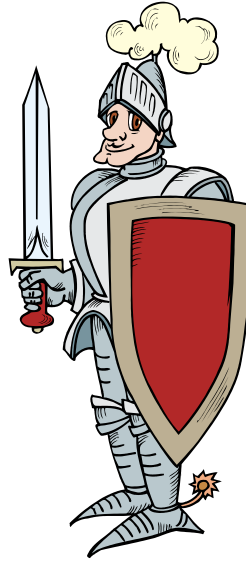
night



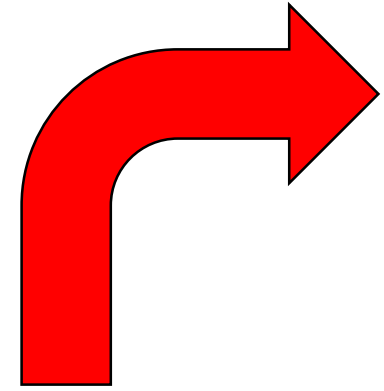
light



high



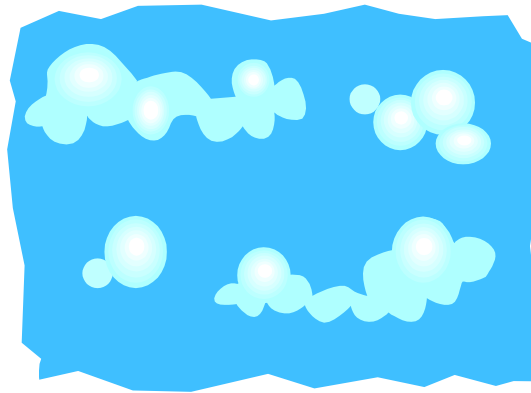
knight



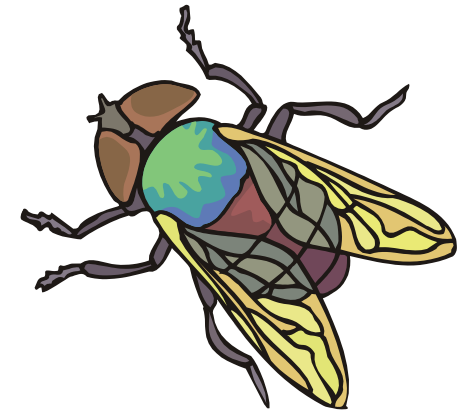
right



cry



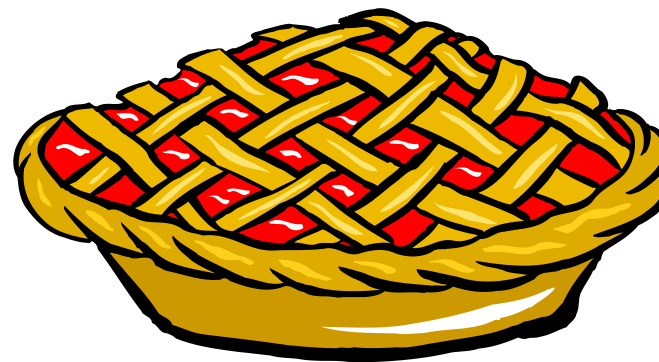
sky



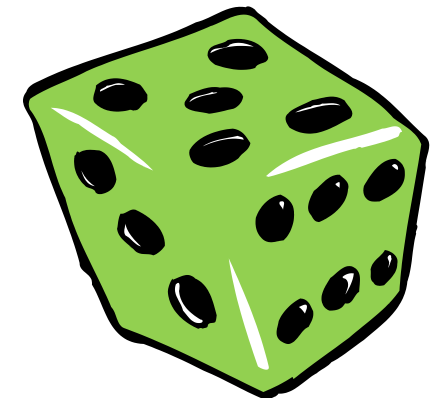
fly



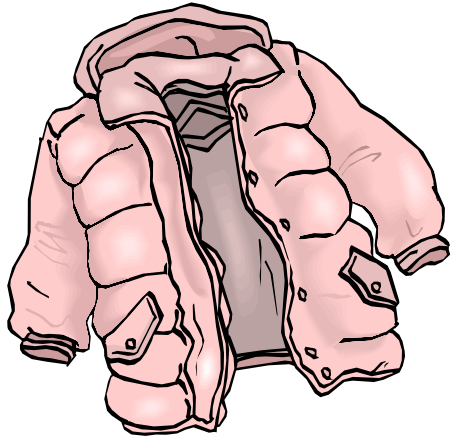
tie



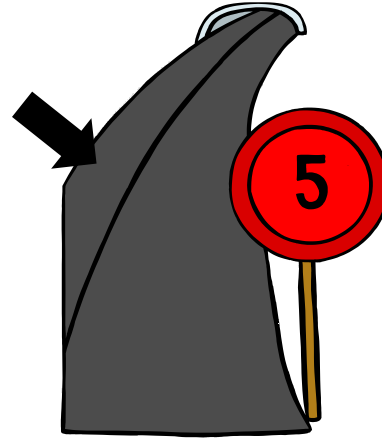
pie



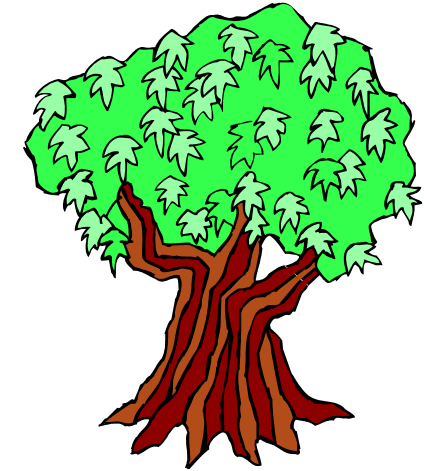
die



coat



road



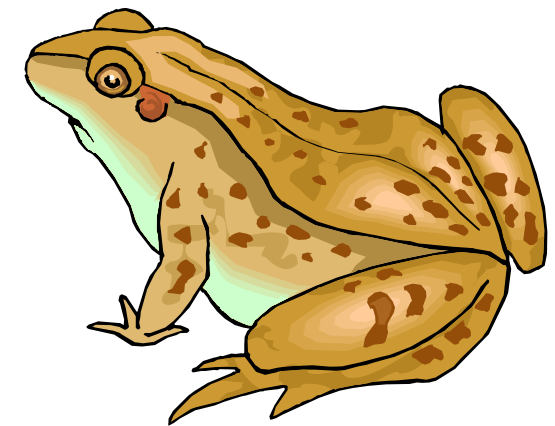
oak



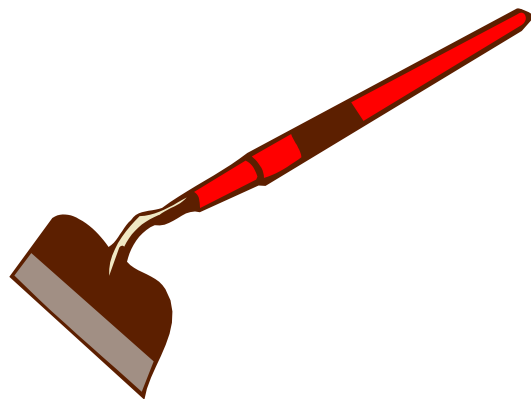
croak



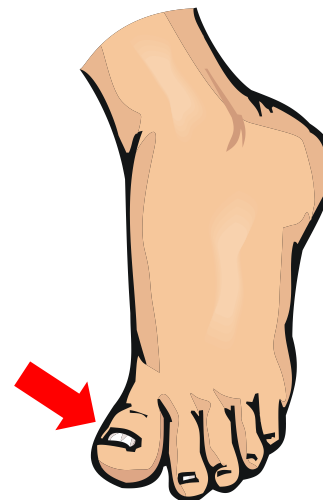
load



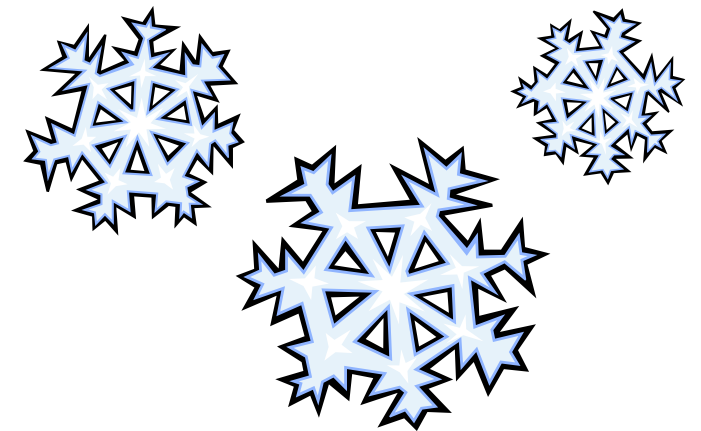
toad



hoe



toe



snow

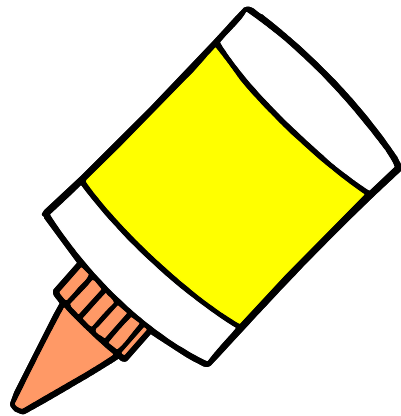
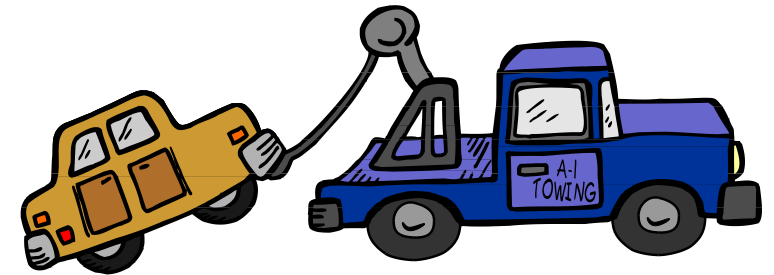
mow



blow



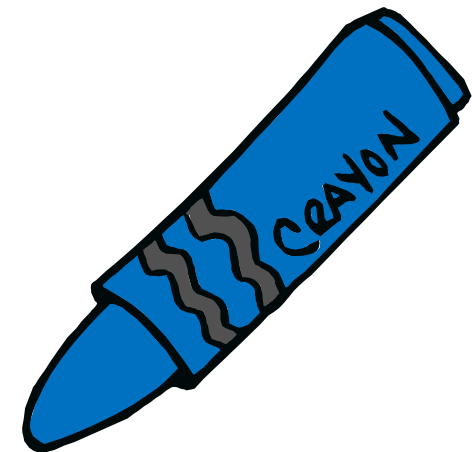
tow



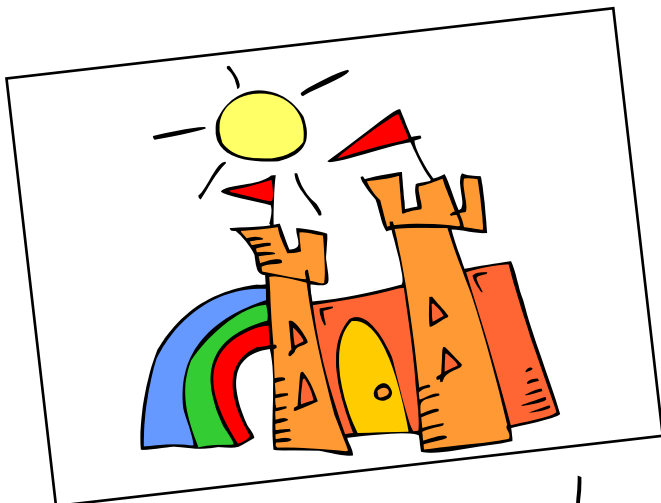
glue



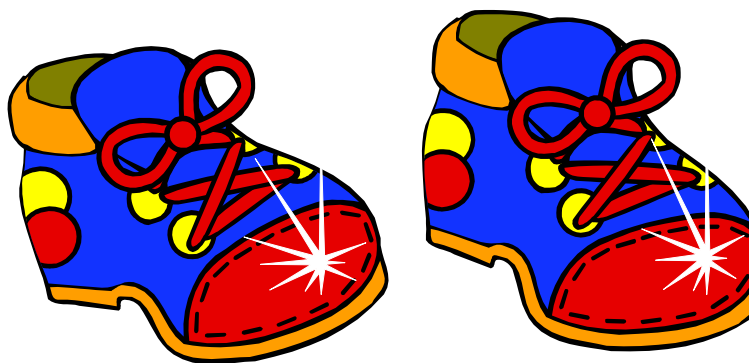
clue



blue



drew



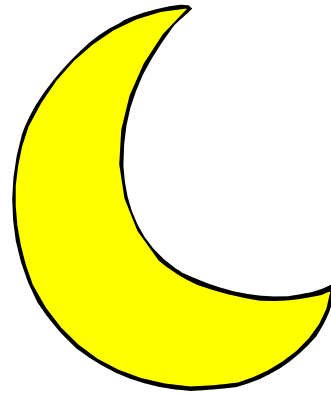
new



stew



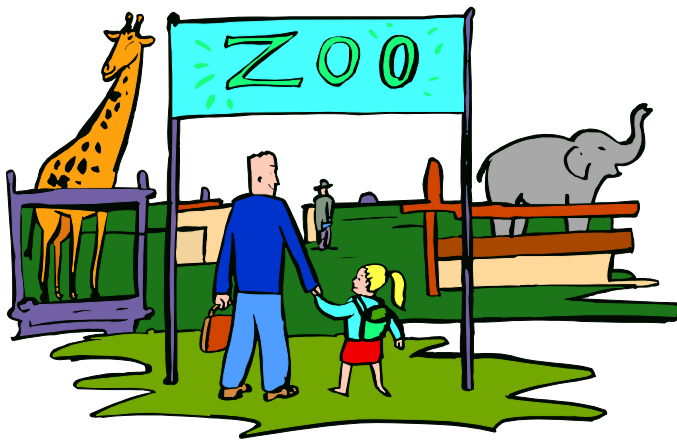
chew



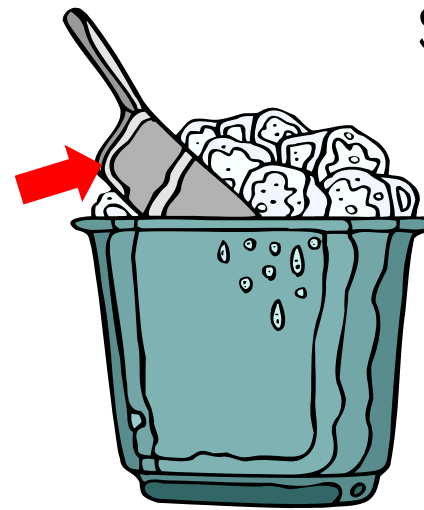
moon



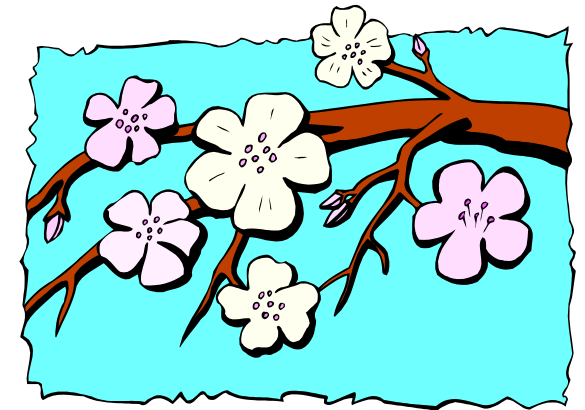
spoon



zoo



scoop



bloom