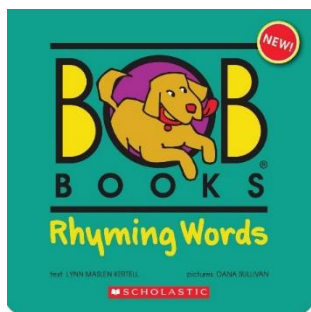


BOB BOOKS

Rhyming Words

Book 8: *The Spot*

1. Picture and Word Matching
2. Bottle Cap Spelling/Writing
3. OT Word Puzzles
4. Word Sorting (OT)
5. Word Hunt
6. Roll a Word
7. Flip a Word
8. Sight Word Search
9. Roll a Sight Word
10. Word Family BINGO

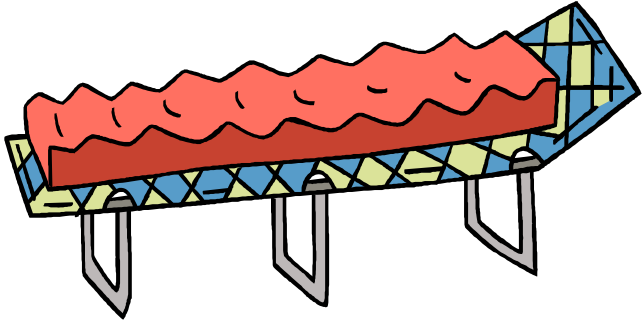


Terms of Use: This printable pack was created for use with your child at home or in the classroom setting. Permission was granted from BOB Books to use their logo.

Created by Becky © www.thisreadingmama.com

©2014 All Rights Reserved.

Directions: Cut apart and match the words with the pictures.

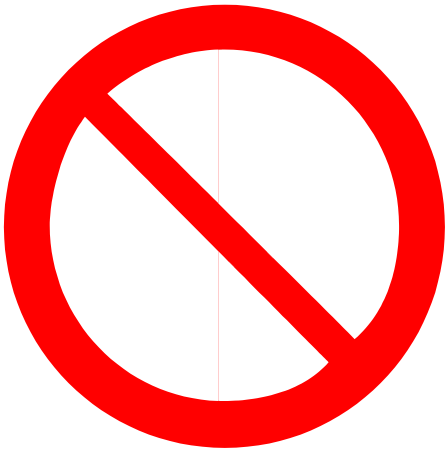


www.thisreadingmama.com



cot

hot



not



pot

Directions: Cut apart and match the words with the pictures.



www.thisreadingmama.com

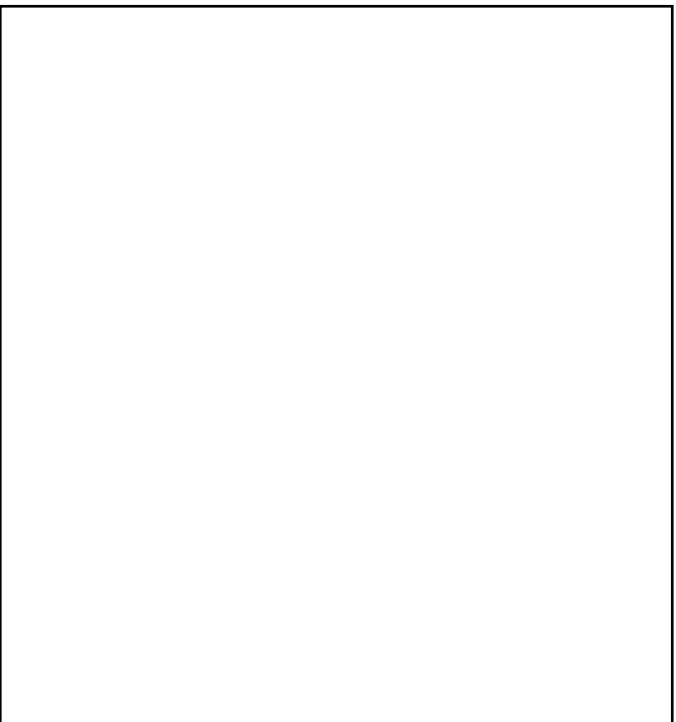


spot

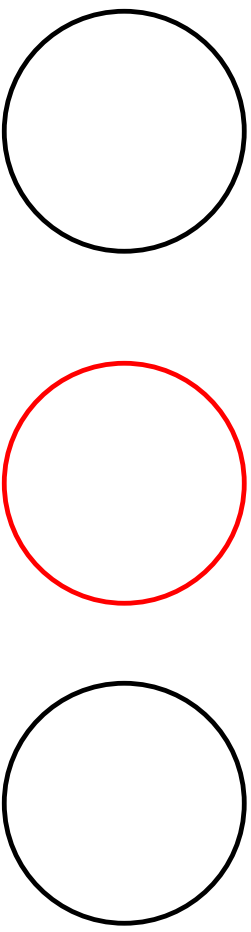
tot

Bottle Cap Spelling

Use the pictures from the picture/word match for this activity.



www.thisreadingmama.com



Directions:

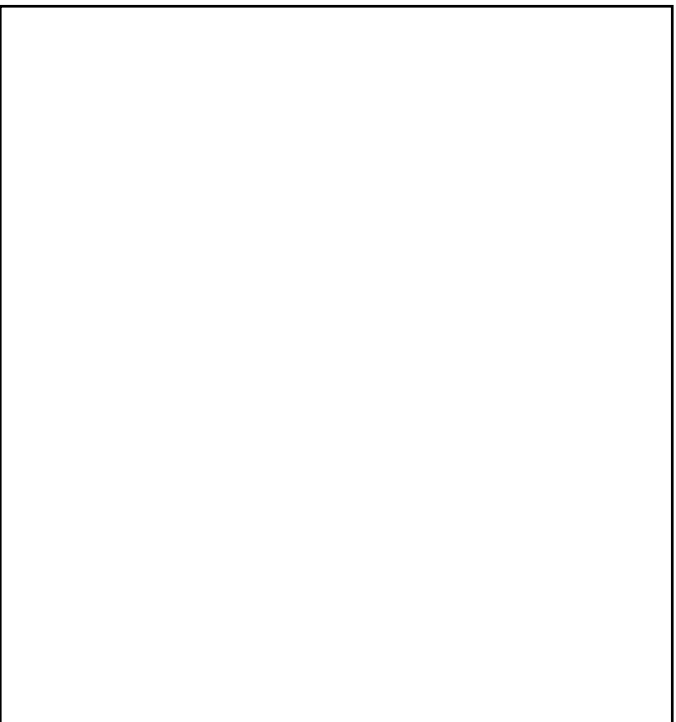
*Gather bottle caps from water bottles or plastic soda bottles, write letters on the tops, and use them to spell the Word Family words. Use red tops for vowels, or write the vowels with red permanent marker.

*Print the Bottle Cap Spelling mat (1 for each student) & picture cards onto cardstock and laminate for durability.

To make this activity self-checking, write the word on the back of each laminated picture.

Word Family Spell a Word

Use the pictures from the picture/word match for this activity.



www.thisreadingmama.com

Three horizontal lines for writing: a solid top line, a dashed middle line, and a solid bottom line.

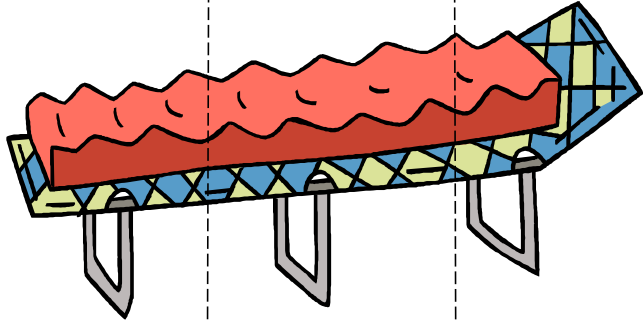
Directions:

*Place the picture card on the square. Then use the dotted lines for the student to write the word family words.

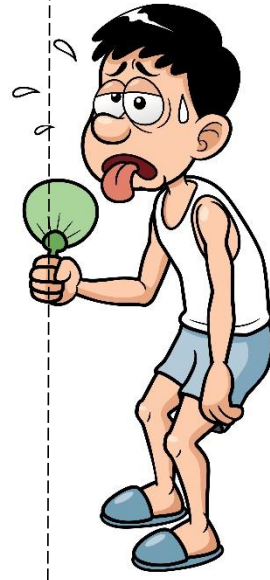
*Print the Bottle Cap Spelling mat (1 for each student) & picture cards onto cardstock and laminate for durability.

To make this activity self-checking, write the word on the back of each laminated picture.

Directions: Cut apart and match the words with the pictures.



www.thisreadingmama.com



c

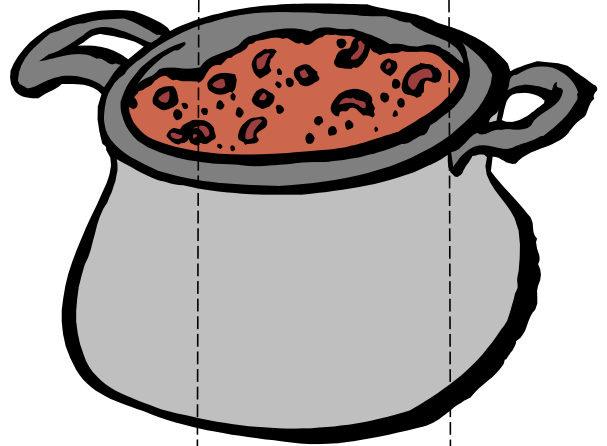
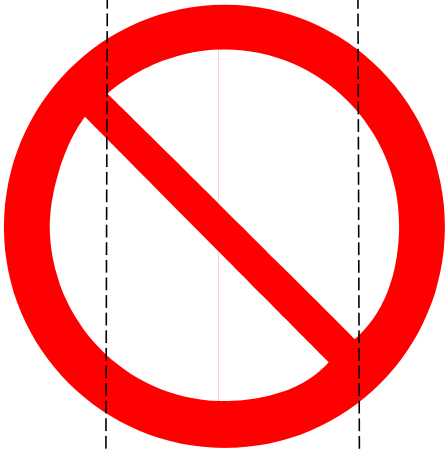
o

t

h

o

t



n

o

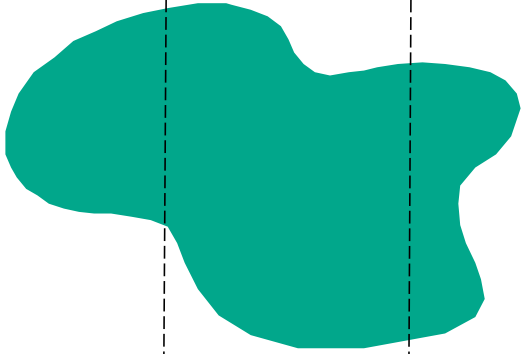
t

p

o

t

Directions: Cut apart and match the words with the pictures.



www.thisreadingmama.com



sp

o

t

t

o

t



Word Family Sorting: Help the tot sort the words. Cut them out and place them on the mat. After you have sorted the words a few times, glue them down.

BOB Books Rhyming Words, Book 8: *The Spot*

OT Words

~~Not~~ OT Words

rub

cot

has

pot

doll

got

dog

lot

bed

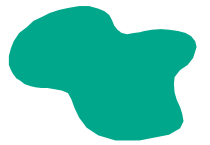
not

bat

spot

Word Hunt

Directions: Can you spot all the OT words in the sentences below?
(Students can dot, circle, underline, or highlight the words)



No, no, not a spot!

The doll is on the cot.

She rubs the spot a lot.

Dot got a spot.

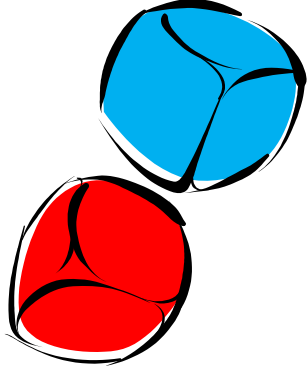
The pot has no spot.

Dot rubs the spot.

Not a spot on the doll.

The tot has lots of dots!

Roll a Word



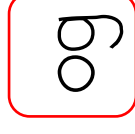
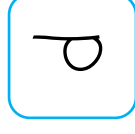
For use with education cubes. If you do not have education cubes, you can purchase them at www.amazon.com (they are called photo stacking blocks), make your own cubes with priority mail boxes, or adapt this activity without use of the cubes.

To Prep:

- Print onto cardstock for durability (you can also laminate inserts, but it's not necessary).
- Place all the onset cards (blue) into one cube and the rime inserts (red) in another cube.

To Play:

- The student rolls the onset cube, then rolls the rime cube.
- Slide the cubes side-by-side to "spell" each word. Example:
- Read each word made.
- As an extension, the student can use the Recording Sheet to write the rolled words. .



Onset Inserts

d

l

www.thisreadingmama.com

n

p

Onset Inserts

c

sp

Rime Inserts

ot

ot

www.thisreadingmama.com

Rime Inserts

ot

ot

ot

ot

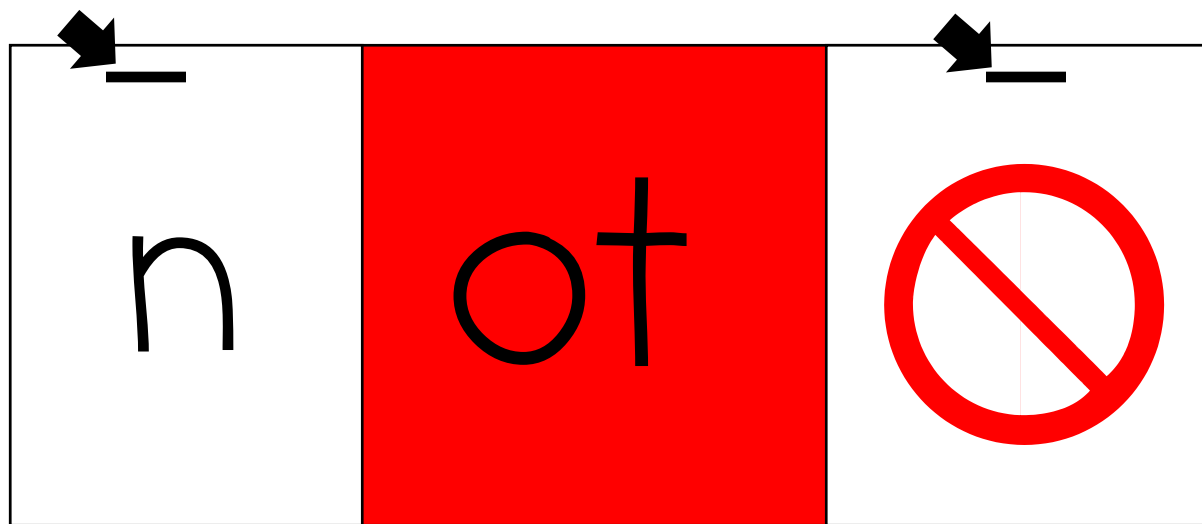
Roll a Word Recording Sheet

Write and illustrate the words you roll.

Flip a Word Directions

staple onset letters here

staple paper for pictures here



Write the onsets
on the papers
stapled above

Draw pictures of
the -ot words on
the papers stapled
above

Directions:

Cut apart papers on the next few pages. Once papers are stapled into place, the student writes 6 different onsets (suggestions are on the bottom of the next page, such as *n*). Once the *ot* is added, the student draws a picture that corresponds with the new word (not) on the stapled paper on the right.

After all the words and pictures are finished, ask the student to flip through the chart and match the words to their pictures.



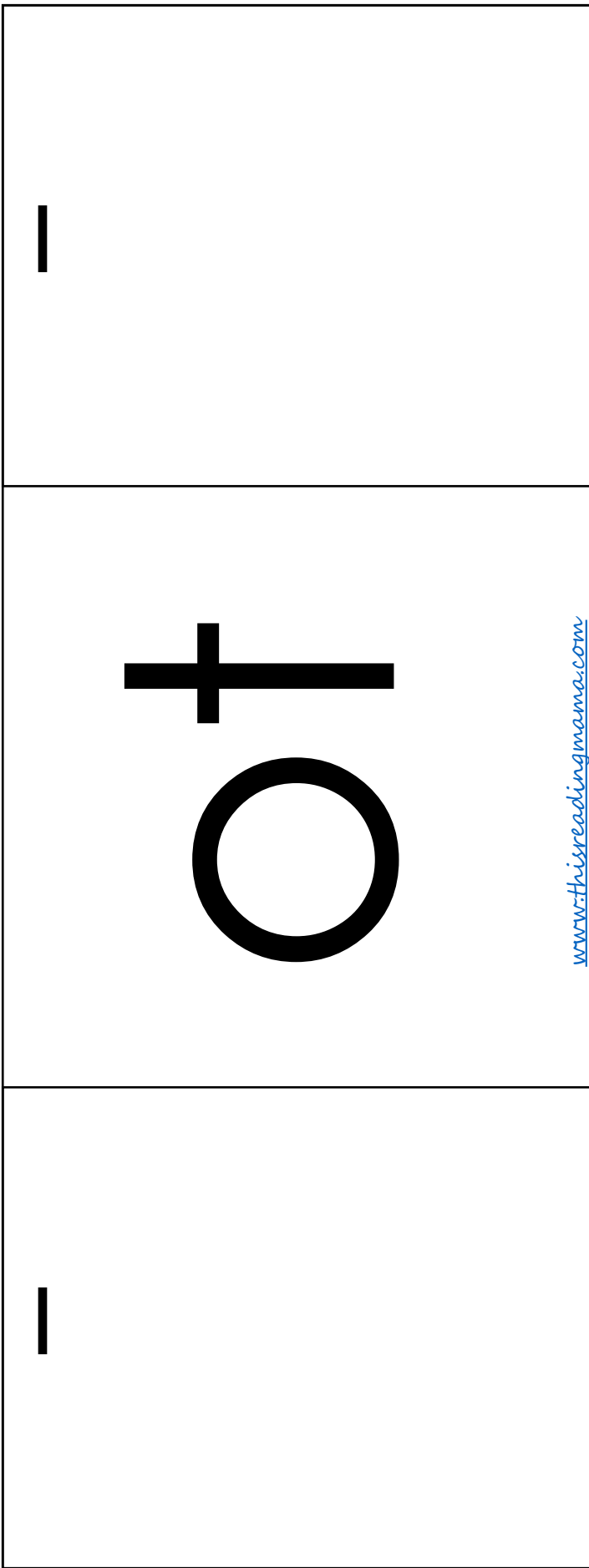
Onsets could include, but are not limited to: *c, d, g, h, l, n, p, sp, tr*



Flip a Word Templates

Flip a Word Template:

Print onto cardstock.
Staple papers onto
this template.



Can you find these words in the puzzle?

no

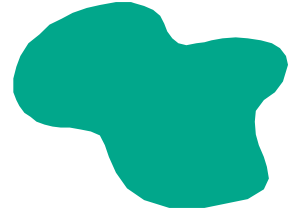
the

is

has

not

got



a	g	i	w	z	h	s	n
t	n	o	t	x	b	r	o
n	p	k	d	o	k	v	p
a	c	i	s	t	a	e	i
s	g	f	o	j	s	h	t
g	o	q	c	x	n	a	g
o	t	y	t	w	a	s	h
i	t	h	e	n	c	a	j

Place inserts into two separate dice. Players take turns rolling the dice and reading the words they have rolled. If the words match (such as *can/can*), the player gets to write the matching word on the recording sheet. The first player to write all six words first wins.

1st die inserts

no

the

www.thisreadingmama.com

is

has

not

got

no

the

www.thisreadingmama.com

2nd die inserts

is

has

not

got

If you roll a match, write the word in one of the spaces. When you have written all six words, you win!



OT Word Family BINGO!

Dot

lot

spot

pot



FREE Space

not

got

shot

rot

OT Word Family BINGO!

trot

got

cot

hot



FREE Space

lot

spot

tot

not

OT Word Family BINGO!

not

shot

rot

pot



FREE Space

Dot

cot

trot

got

OT Word Family BINGO!

shot

tot

not

hot



FREE Space

got

spot

lot

pot

BINGO Directions: Print and cut out cards. Place them in a pile face down. Players take turns drawing a card and reading the word. All players look for the word on their board and cover it if they have it. The first player to get three in a row wins.

Dot	cot	lot
not	pot	got
hot	rot	tot
spot	trot	shot