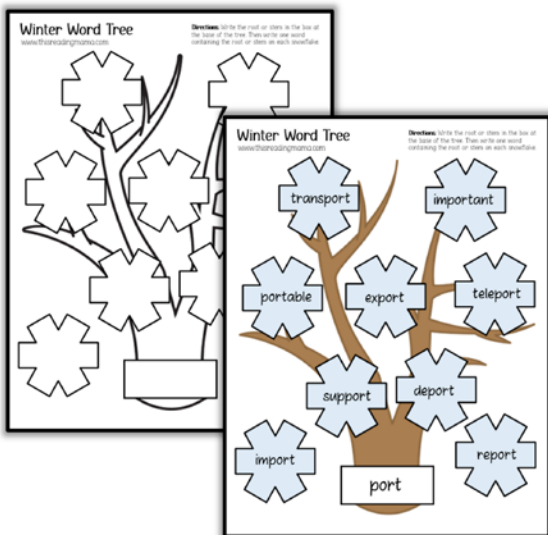


WINTER TREE

morpheme mat

WINTER TREE

morpheme mat



www.thisreadingmama.com

Enjoy this FREE Winter Tree Morpheme Mat for Latin stems or Greek roots! It comes in color and blackline.

Learners write the root or stem at the base of the tree then write as many words as they can think of (or find in their reading/dictionary) that have the root or stem in the word.

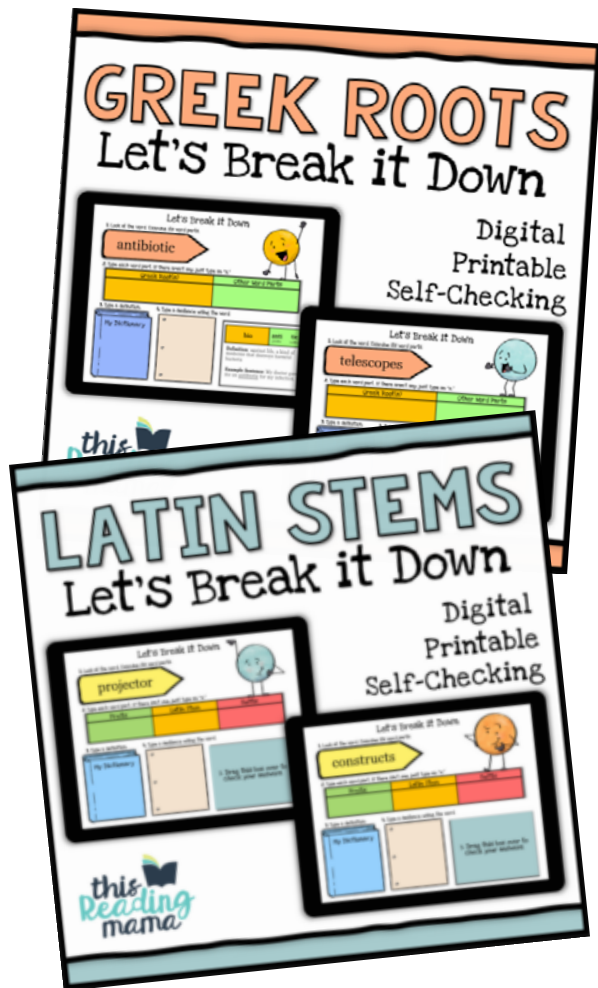
Find the post [HERE](#).

Find all our FREE
Winter Printables [HERE](#)!

Terms of Use: This pack was created for you to use at home with your child(ren) or with multiple children in *your* classroom or tutoring setting. Please *do not* share between classroom teachers, sell, host, reproduce, giveaway, or store on any other site (including a blog, Facebook, 4Shared, Dropbox, Amazon Inspire, etc.). Thank you!

www.thisreadingmama.com

FROM MY SHOP...



DIGITAL & PRINTABLE TASK CARDS

Help learners break down words with stems and roots.

- [Latin Stem Cards](#)
- [Greek Root Cards](#)

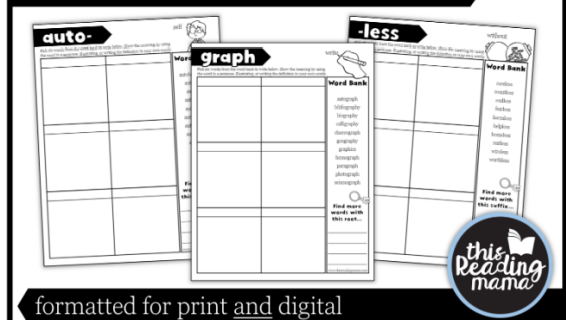


DIGITAL & PRINTABLE PAGES

[NO PREP Morpheme Pages](#) for:

- Prefixes
- Suffixes
- Latin Stems
- Greek Roots

100+ NO PREP pages
**Prefixes, Suffixes,
Greek Roots, and
Latin Stems**

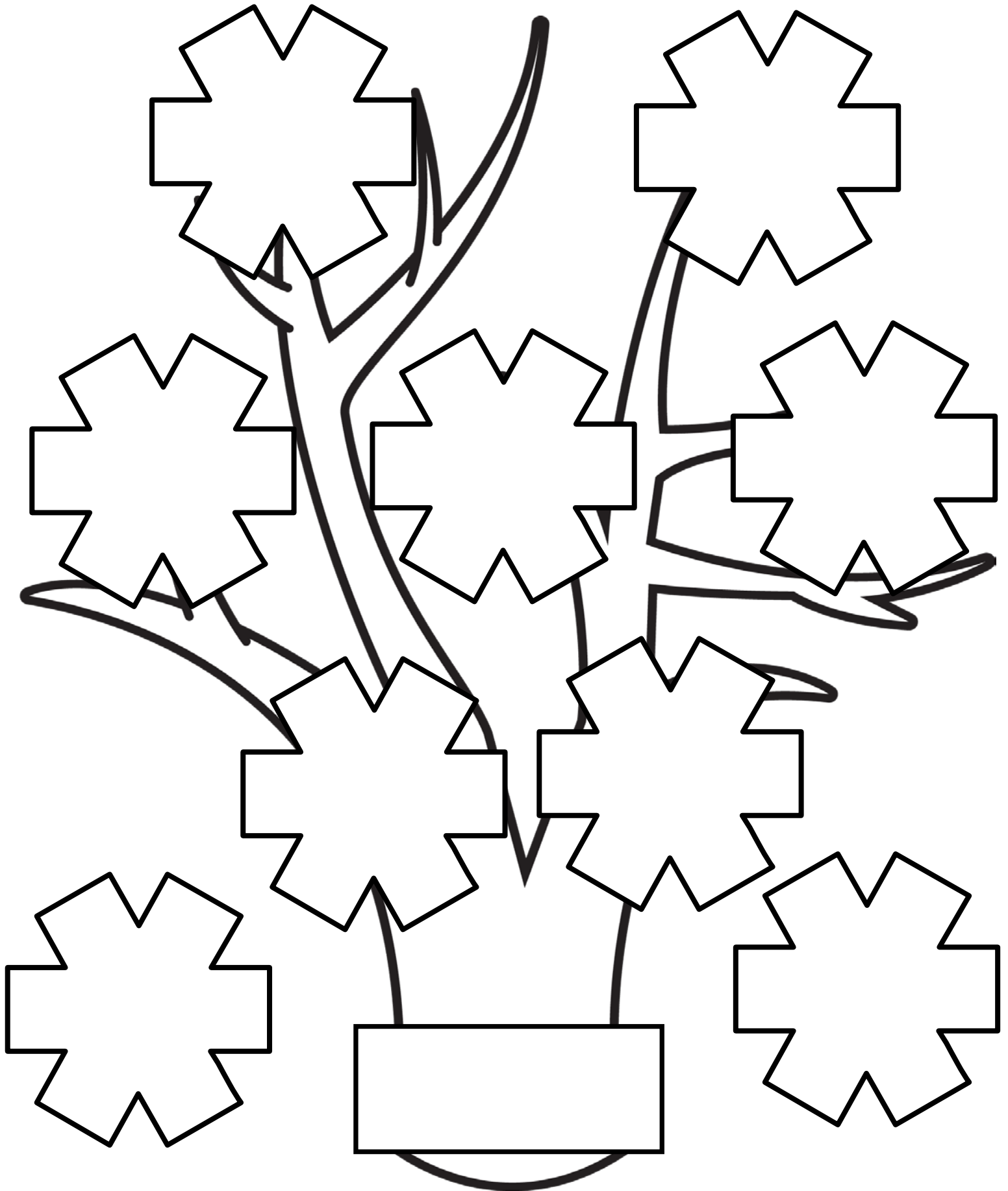


formatted for print and digital

Winter Word Tree

www.thisreadingmama.com

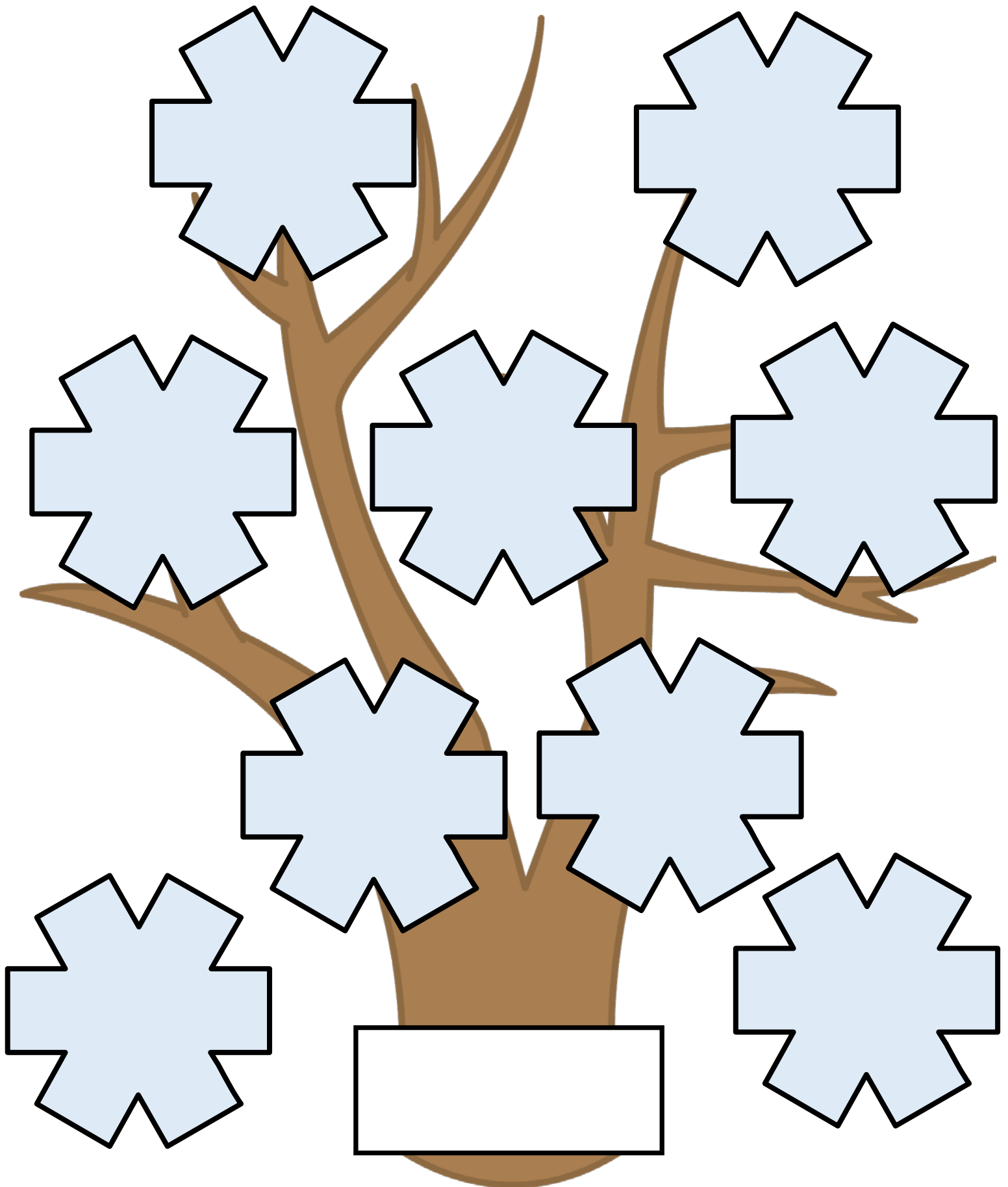
Directions: Write the root or stem in the box at the base of the tree. Then write one word containing the root or stem on each snowflake.



Winter Word Tree

www.thisreadingmama.com

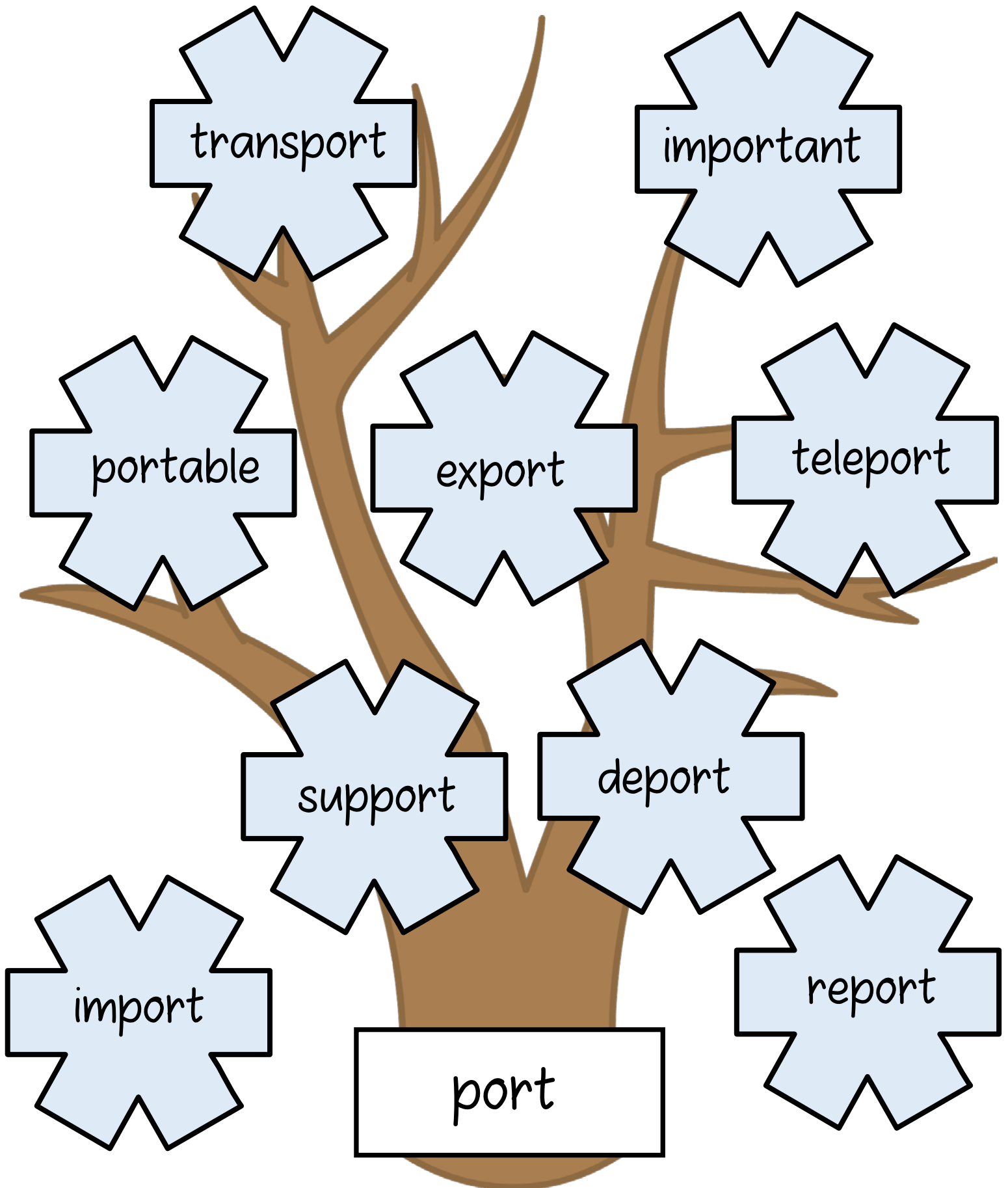
Directions: Write the root or stem in the box at the base of the tree. Then write one word containing the root or stem on each snowflake.



Winter Word Tree

www.thisreadingmama.com

Directions: Write the root or stem in the box at the base of the tree. Then write one word containing the root or stem on each snowflake.



LET'S CONNECT!



CLIP ART & FONTS BY:

